



QUALITY ASSURED

STAINLESS STEEL FITTINGS

TUBES :: PIPES :: BALL VALVES :: PIPE FITTINGS :: FLANGES

Formed in 1988, NERO has evolved into one of the UK's largest stockists and distributors of stainless steel pipeline products.

The range supplied includes valves, tubes, pipes, fittings, flanges, clips, brackets and related ancillary equipment in stainless steel, although other materials are available on request.

Based near Birmingham in the heart of England we supply to a wide range of customers across a diverse range of industries. These industries include process, hydraulics, pneumatics, chemical, petrochemical, water, marine, pump and many more.

All of our products are from quality assured sources and our procedures conform to the latest standard of ISO 9001: 2008 This coupled with our outstanding customer service make NERO the preferred supplier in the industry.

Whatever the quantity, NERO holds high stock levels and orders for stock items are despatched up to the close on day of order placement. Material test certificates or certificates of conformity can also be supplied.

If you require any more information, require any specials or there are any products you cannot find, please don't hesitate to contact us as we are constantly adding to our range.

We operate approved credit accounts but can also accept payment via the credit or debit cards listed below:



NERO's ONLINE STORE



LIVE STOCK LEVELS

Automated stock updates 24/7

ACCOUNT BASED PRICES

Competitive prices unique to your account

ACCESS TO ORDER HISTORY

Save time searching through files

TECHNICAL INFORMATION FOR ALL PRODUCTS

Answers many of your questions

STREAMLINED NAVIGATION

Products easy to find and easy to purchase

TELEPHONE SALES SUPPORT

Talk to a real person for sales support

STOCK ITEMS DESPATCHED SAME DAY

Order placed before 4:30pm dispatched same day

PLACE ORDERS 24 HOURS A DAY

Choose your own opening hours

NEW PRODUCTS SHOWN IMMEDIATELY

No waiting for new catalogues

FOR MORE INFORMATION PLEASE VISIT

WWW.NERO.CO.UK



**150LB BSP / NPT THREADED
FITTINGS**

SECTION 1
PAGE 1.1



3000LB PIPE FITTINGS

SECTION 2
PAGE 2.1



**BUTT WELD
PIPE FITTINGS**

SECTION 3
PAGE 3.1



**SINGLE FERRULE
COMPRESSION FITTINGS**

SECTION 4
PAGE 4.1



**TWIN FERRULE
COMPRESSION FITTINGS**

SECTION 5
PAGE 5.1



BALL VALVES

SECTION 6
PAGE 6.1



OTHER VALVES

SECTION 7
PAGE 7.1



FLANGES

SECTION 8
PAGE 8.1



TUBE & PIPE

SECTION 9
PAGE 9.1



TUBE, PIPE CLAMPS & BOLTS

SECTION 10
PAGE 10.1



**HYDRAULIC FITTINGS
& SEALS**

SECTION 11
PAGE 11.1



**QUICK RELEASE
COUPLINGS**

SECTION 12
PAGE 12.1



Product information

- 150 LB/PSI Pressure Rating
- Female threads are BSPP (Parallel) / NPT
- Male Threads are BSPT(Taper) / NPT
- Hydrostatic test to 225 PSI
- 316 (CF8M) stainless steel
- Investment castings
- Sizes 1/8" to 4" fittings
- Pipe nipples to 6"

Index

DESCRIPTION	PAGE		DESCRIPTION	PAGE	
	BSP	NPT		BSP	NPT
Elbow 90°	1.2	1.8	Hosetail	1.6	1.9
Tee	1.3	1.8	Reducing hosetail	1.6	
Cross	1.3		Female hosetail (cone seat swivel)	1.7	
Street elbow 90°	1.2	1.8	Female hosetail	1.6	
Elbow 45°	1.2	1.8	Hose joiner	1.7	
Union elbow 90°	1.2		Close taper nipple standard/extended	1.5	
Reducing elbow 90°	1.2		Barrel nipple	1.5	1.9
Union conical female/female	1.2	1.8	Weld nipple	1.5	1.9
Union conical BSPT male/BSPP female	1.2		Parallel nipple	1.5	
Union flat seat female/female (teflon seat)	1.2		Male bend 90°	1.4	
Union male/male (conical and flat seat)	1.2		45deg male/female elbow	1.2	
Hexagon nipple	1.3	1.8	Y-piece	1.4	
Hexagon head plug	1.3	1.8	Reducing bush BSPT male/BSPP female	1.4	1.9
Square head plug	1.3		Reducing tee	1.3	
Round cap	1.3	1.8	U-syphon	1.5	
Hexagon cap	1.3	1.8	Ring syphon	1.5	
Hexagon locknut	1.5		Union conical butt weld	1.2	
Half socket	1.4	1.8	Reducing adaptor female/male	1.4	
Reducing nipple	1.3	1.9	Barrel nipple (extended length)	1.6	
Full socket	1.4	1.8	Weld nipples (extended length)	1.7	
Reducing socket	1.4	1.9			



90° ELBOW

STREET ELBOW BSPT/BSPP

45° ELBOW

45° MALE X FEMALE
ELBOW
BSPT/BSPP

THREAD SIZE BSPP	PART No
1/8	E02
1/4	E04
3/8	E06
1/2	E08
3/4	E12
1	E16
1-1/4	E20
1-1/2	E24
2	E32
2-1/2	E40
3	E48
4	E64

THREAD SIZE M/F	PART No
1/8	SE02
1/4	SE04
3/8	SE06
1/2	SE08
3/4	SE12
1	SE16
1-1/4	SE20
1-1/2	SE24
2	SE32
2-1/2	SE40
3	SE48
4	SE64

THREAD SIZE BSPP	PART No
1/8	EA02
1/4	EA04
3/8	EA06
1/2	EA08
3/4	EA12
1	EA16
1-1/4	EA20
1-1/2	EA24
2	EA32
2-1/2	EA40
3	EA48
4	EA64

THREAD SIZE M/F	PART No
1/8	SEA02
1/4	SEA04
3/8	SEA06
1/2	SEA08
3/4	SEA12
1	SEA16
1-1/4	SEA20
1-1/2	SEA24
2	SEA32



REDUCING ELBOW

UNION ELBOW (conical seat)

UNION CONICAL
FEMALE / FEMALE

UNION FLAT SEAT
FEMALE / FEMALE
TEFLON GASKET

THREAD SIZE BSPP	PART No
1/4 X 1/8	RE0402
3/8 X 1/4	RE0604
1/2 X 1/4	RE0804
1/2 X 3/8	RE0806
3/4 X 3/8	RE1206
3/4 X 1/2	RE1208
1 X 1/2	RE1608
1 X 3/4	RE1612
1-1/4 X 3/4	RE2012
1-1/4 X 1	RE2016
1-1/2 X 1	RE2416
1-1/2 X 1-1/4	RE2420
2 X 1	RE3216
2 X 1-1/4	RE3220
2 X 1-1/2	RE3224

THREAD SIZE BSPP	PART No
1/8	EUC02
1/4	EUC04
3/8	EUC06
1/2	EUC08
3/4	EUC12
1	EUC16
1-1/4	EUC20
1-1/2	EUC24
2	EUC32

THREAD SIZE BSPP	PART No
1/8	UC02
1/4	UC04
3/8	UC06
1/2	UC08
3/4	UC12
1	UC16
1-1/4	UC20
1-1/2	UC24
2"	UC32
2-1/2	UC40
3	UC48
4	UC64

THREAD SIZE BSPP	PART No
1/8	UF02
1/4	UF04
3/8	UF06
1/2	UF08
3/4	UF12
1	UF16
1-1/4	UF20
1-1/2	UF24
2	UF32
2-1/2	UF40
3	UF48
4	UF64



UNION FLAT SEAT
BSPT MALE/
BSPP FEMALE

UNION CONICAL
BSPT MALE /
BSPP FEMALE

THREAD SIZE M/F	PART No
1/8	UFMF02
1/4	UFMF04
3/8	UFMF06
1/2	UFMF08
3/4	UFMF12
1	UFMF16
1-1/4	UFMF20
1-1/2	UFMF24
2	UFMF32

THREAD SIZE M/F	PART No
1/8	UCMF02
1/4	UCMF04
3/8	UCMF06
1/2	UCMF08
3/4	UCMF12
1	UCMF16
1-1/4	UCMF20
1-1/2	UCMF24
2	UCMF32



UNION CONICAL
MALE / MALE

UNION FLAT SEAT
MALE / MALE
TEFLON GASKET

THREAD SIZE M/M	PART No
1/8	UCMM02
1/4	UCMM04
3/8	UCMM06
1/2	UCMM08
3/4	UCMM12
1	UCMM16
1-1/4	UCMM20
1-1/2	UCMM24
2	UCMM32

THREAD SIZE M/M	PART No
1/8	UFMM02
1/4	UFMM04
3/8	UFMM06
1/2	UFMM08
3/4	UFMM12
1	UFMM16
1-1/4	UFMM20
1-1/2	UFMM24
2	UFMM32



BUTT WELD CONICAL UNION

SIZE NB PIPE	PART No
1/8	UCBW02
1/4	UCBW04
3/8	UCBW06
1/2	UCBW08
3/4	UCBW12
1	UCBW16
1-1/4	UCBW20
1-1/2	UCBW24
2	UCBW32

EQUAL TEE

THREAD SIZE BSPP	PART No
1/8	T02
1/4	T04
3/8	T06
1/2	T08
3/4	T12
1	T16
1-1/4	T20
1-1/2	T24
2	T32
2-1/2	T40
3	T48
4	T64

REDUCING TEE

THREAD SIZE BSPP	PART No
1/4 X 1/8	RT0402
3/8 X 1/4	RT0604
1/2 X 1/4	RT0804
1/2 X 3/8	RT0806
3/4 X 3/8	RT1206
3/4 X 1/2	RT1208
1 X 1/2	RT1608
1 X 3/4	RT1612
1-1/4 X 3/4	RT2012
1-1/4 X 1	RT2016
1-1/2 X 3/4	RT2412
1-1/2 X 1	RT2416
1-1/2 X 1-1/4	RT2420
2 X 1/2	RT3208
2 X 3/4	RT3212
2 X 1	RT3216
2 X 1-1/4	RT3220
2 X 1-1/2	RT3224

EQUAL CROSS

THREAD SIZE BSPP	PART No
1/8	C02
1/4	C04
3/8	C06
1/2	C08
3/4	C12
1	C16
1-1/4	C20
1-1/2	C24
2	C32
2-1/2	C40
3	C48
4	C64



HEXAGON HEAD PLUG

THREAD SIZE BSPT	PART No
1/8	HP02
1/4	HP04
3/8	HP06
1/2	HP08
3/4	HP12
1	HP16
1-1/4	HP20
1-1/2	HP24
2	HP32
2-1/4	HP36
2-1/2	HP40
3	HP48
4	HP64

SQUARE HEAD PLUG

THREAD SIZE BSPT	PART No
1/8	SP02
1/4	SP04
3/8	SP06
1/2	SP08
3/4	SP12
1	SP16
1-1/4	SP20
1-1/2	SP24
2	SP32
2-1/2	SP40
3	SP48
4	SP64



HEXAGON NIPPLE

THREAD SIZE BSPT	PART No
1/8	HN02
1/4	HN04
3/8	HN06
1/2	HN08
3/4	HN12
1	HN16
1-1/4	HN20
1-1/2	HN24
2	HN32
2-1/2	HN40
3	HN48
4	HN64

REDUCING NIPPLE

THREAD SIZE BSPT	PART No
1/4 X 1/8	RN0402
3/8 X 1/8	RN0602
3/8 X 1/4	RN0604
1/2 X 1/8	RN0802
1/2 X 1/4	RN0804
1/2 X 3/8	RN0806
3/4 X 1/4	RN1204
3/4 X 3/8	RN1206
3/4 X 1/2	RN1208
1 X 1/4	RN1604
1 X 3/8	RN1606
1 X 1/2	RN1608
1 X 3/4	RN1612
1-1/4 X 1/2	RN2008
1-1/4 X 3/4	RN2012
1-1/4 X 1	RN2016
1-1/2 X 1/2	RN2408
1-1/2 X 3/4	RN2412
1-1/2 X 1	RN2416
1-1/2 X 1-1/4	RN2420
2 X 1/2	RN3208
2 X 3/4	RN3212
2 X 1	RN3216
2 X 1-1/4	RN3220
2 X 1-1/2	RN3224
2-1/2 X 1-1/2	RN4024
2-1/2 X 2	RN4032
3 X 1-1/2	RN4824
3 X 2	RN4832
3 X 2-1/2	RN4840
4 X 2	RN6432
4 X 3	RN6448



ROUND CAP

THREAD SIZE BSPP	PART No
1/8	RC02
1/4	RC04
3/8	RC06
1/2	RC08
3/4	RC12
1	RC16
1-1/4	RC20
1-1/2	RC24
2	RC32
2-1/2	RC40
3	RC48
4	RC64

HEXAGON CAP

THREAD SIZE BSPP	PART No
1/8	HC02
1/4	HC04
3/8	HC06
1/2	HC08
3/4	HC12
1	HC16
1-1/4	HC20
1-1/2	HC24
2	HC32
2-1/2	HC40
3	HC48
4	HC64



HALF SOCKET

THREAD SIZE BSPP	PART No
1/8	HS02
1/4	HS04
3/8	HS06
1/2	HS08
3/4	HS12
1	HS16
1-1/4	HS20
1-1/2	HS24
2	HS32
2-1/2	HS40
3	HS48
4	HS64

FULL SOCKET

THREAD SIZE BSPP	PART No
1/8	S02
1/4	S04
3/8	S06
1/2	S08
3/4	S12
1	S16
1-1/4	S20
1-1/2	S24
2	S32
2-1/4	S36
2-1/2	S40
3	S48
4	S64
5	S80
6	S96

REDUCING SOCKET

THREAD SIZE BSPP	PART No
1/4 X 1/8	RS0402
3/8 X 1/8	RS0602
3/8 X 1/4	RS0604
1/2 X 1/8	RS0802
1/2 X 1/4	RS0804
1/2 X 3/8	RS0806
3/4 X 1/4	RS1204
3/4 X 3/8	RS1206
3/4 X 1/2	RS1208
1 X 1/4	RS1604
1 X 3/8	RS1606
1 X 1/2	RS1608
1 X 3/4	RS1612
1-1/4 X 1/2	RS2008
1-1/4 X 3/4	RS2012
1-1/4 X 1	RS2016
1-1/2 X 1/2	RS2408
1-1/2 X 3/4	RS2412
1-1/2 X 1	RS2416
1-1/2 X 1-1/4	RS2420
2 X 1/2	RS3208
2 X 3/4	RS3212
2 X 1	RS3216
2 X 1-1/4	RS3220
2 X 1-1/2	RS3224
2-1/2 X 1-1/2	RS4024
2-1/2 X 2	RS4032
3 X 1-1/2	RS4824
3 X 2	RS4832
3 X 2-1/2	RS4840
4 X 2	RS6432
4 X 2-1/2	RS6440
4 X 3	RS6448

REDUCING BUSH BSPT MALE / BSPP FEMALE

THREAD SIZE M/F	PART No
1/4 X 1/8	RB0402
3/8 X 1/8	RB0602
3/8 X 1/4	RB0604
1/2 X 1/8	RB0802
1/2 X 1/4	RB0804
1/2 X 3/8	RB0806
3/4 X 1/4	RB1204
3/4 X 3/8	RB1206
3/4 X 1/2	RB1208
1 X 1/4	RB1604
1 X 3/8	RB1606
1 X 1/2	RB1608
1 X 3/4	RB1612
1-1/4 X 3/8	RB2006
1-1/4 X 1/2	RB2008
1-1/4 X 3/4	RB2012
1-1/4 X 1	RB2016
1-1/2 X 3/8	RB2406
1-1/2 X 1/2	RB2408
1-1/2 X 3/4	RB2412
1-1/2 X 1	RB2416
1-1/2 X 1-1/4	RB2420
2 X 1/2	RB3208
2 X 3/4	RB3212
2 X 1	RB3216
2 X 1-1/4	RB3220
2 X 1-1/2	RB3224
2-1/2 X 3/4	RB4012
2-1/2 X 1	RB4016
2-1/2 X 3/4	RB4020
2-1/2 X 1-1/2	RB4024
2-1/2 X 2	RB4032
3 X 1	RB4816
3 X 1-1/4	RB4820
3 X 1-1/2	RB4824
3 X 2	RB4832
3 X 2-1/2	RB4840
4 X 1-1/2	RB6424
4 X 2	RB6432
4 X 2-1/2	RB6440
4 X 3	RB6448



Y-PIECE

THREAD SIZE BSPP	PART No
1/8	Y02
1/4	Y04
3/8	Y06
1/2	Y08
3/4	Y12
1	Y16
1-1/4	Y20
1-1/2	Y24
2	Y32

REDUCING ADAPTOR FEMALE BSPP/MALE BSPT

THREAD SIZE F/M	PART No
1/4 X 1/8	RAFM0402
3/8 X 1/4	RAFM0604
1/2 X 1/4	RAFM0804
1/2 X 3/8	RAFM0806
3/4 X 3/8	RAFM1206
3/4 X 1/2	RAFM1208
1 X 1/2	RAFM1608
1 X 3/4	RAFM1612
1-1/4 X 3/4	RAFM2012
1-1/4 X 1	RAFM2016
1-1/2 X 1	RAFM2416
1-1/2 X 1-1/4	RAFM2420
2 X 1-1/4	RAFM3220
2 X 1-1/2	RAFM3224



MALE BEND 90

THREAD SIZE BSPT	PART No
1/8	MB02
1/4	MB04
3/8	MB06
1/2	MB08
3/4	MB12
1	MB16
1-1/4	MB20
1-1/2	MB24
2	MB32
2-1/2	MB40
3	MB48

STANDARD LENGTH NIPPLES



BARREL NIPPLE

THREAD SIZE BSPT	PART No	LENGTH
1/8	BN02	30mm
1/4	BN04	30mm
3/8	BN06	40mm
1/2	BN08	60mm
3/4	BN12	60mm
1	BN16	60mm
1-1/4	BN20	80mm
1-1/2	BN24	80mm
2	BN32	100mm
2-1/2	BN40	100mm
3	BN48	120mm
4	BN64	120mm
5	BN80	150mm
6	BN96	150mm



WELD NIPPLE

THREAD SIZE BSPT	PART No	LENGTH
1/8	WN02	30mm
1/4	WN04	30mm
3/8	WN06	30mm
1/2	WN08	35mm
3/4	WN12	40mm
1	WN16	40mm
1-1/4	WN20	50mm
1-1/2	WN24	50mm
2	WN32	50mm
2-1/2	WN40	60mm
3	WN48	70mm
4	WN64	80mm
5	WN80	100mm
6	WN96	100mm



HEXAGON LOCKNUT

THREAD SIZE BSPP	PART No
1/8	LN02
1/4	LN04
3/8	LN06
1/2	LN08
3/4	LN12
1	LN16
1-1/4	LN20
1-1/2	LN24
2	LN32
2-1/2	LN40
3	LN48
4	LN64



PARALLEL NIPPLE

THREAD SIZE BSPP	PART No	LENGTH
1/8	PN02	16mm
1/4	PN04	18mm
3/8	PN06	22mm
1/2	PN08	25mm
3/4	PN12	30mm
1	PN16	35mm
1-1/4	PN20	38mm
1-1/2	PN24	38mm
2	PN32	45mm
2-1/2	PN40	55mm
3	PN48	60mm
4	PN64	70mm



EXTENDED PARALLEL NIPPLE

THREAD SIZE BSPP	PART No	LENGTH
1/8	PN02-30	30mm
1/4	PN04-30	30mm
3/8	PN06-40	40mm
1/2	PN08-50	50mm
3/4	PN12-60	60mm
1	PN16-70	70mm
1-1/4	PN20-75	75mm
1-1/2	PN24-75	75mm
2	PN32-90	90mm



CLOSE TAPER NIPPLE

THREAD SIZE BSPT	PART No	LENGTH
1/8	CTN02	23mm
1/4	CTN04	24mm
3/8	CTN06	25mm
1/2	CTN08	29mm
3/4	CTN12	32mm
1	CTN16	38mm
1-1/4	CTN20	38mm
1-1/2	CTN24	44mm
2	CTN32	44mm
2-1/2	CTN40	57mm
3	CTN48	64mm
4	CTN64	76mm



U-SYPHON
(with 2 locknuts)

THREAD SIZE BSPT / BSPP	PART No
1/4	US04
3/8	US06
1/2	US08



RING SYPHON
(Also known as
Pigtail Syphons)
(with 2 locknuts)

THREAD SIZE BSPT / BSPP	PART No
1/4	PTS04
3/8	PTS06
1/2	PTS08

EXTENDED/REDUCED LENGTH NIPPLES



EXTENDED/REDUCED BARREL NIPPLES OF VARIOUS LENGTHS (non standard)

THREAD SIZE BSPT	PART No	LENGTH MM	THREAD SIZE BSPT	PART No	LENGTH MM	THREAD SIZE BSPT	PART No	LENGTH MM
1/8	BN02-40	40	1/2	BN08-150	150	1-1/4	BN20-180	180
1/8	BN02-50	50	1/2	BN08-180	180	1-1/4	BN20-200	200
1/4	BN04-40	40	1/2	BN08-200	200	1-1/4	BN20-250	250
1/4	BN04-50	50	1/2	BN08-250	250	1-1/4	BN20-300	300
1/4	BN04-60	60	1/2	BN08-300	300	1-1/2	BN24-50	50
1/4	BN04-80	80	3/4	BN12-40	40	1-1/2	BN24-100	100
1/4	BN04-100	100	3/4	BN12-50	50	1-1/2	BN24-130	130
1/4	BN04-130	130	3/4	BN12-80	80	1-1/2	BN24-150	150
1/4	BN04-150	150	3/4	BN12-100	100	1-1/2	BN24-180	180
1/4	BN04-180	180	3/4	BN12-130	130	1-1/2	BN20-200	200
1/4	BN04-200	200	3/4	BN12-150	150	1-1/2	BN20-250	250
1/4	BN04-250	250	3/4	BN12-180	180	1-1/2	BN20-300	300
1/4	BN04-300	300	3/4	BN12-200	200	2	BN32-50	50
3/8	BN06-50	50	3/4	BN12-250	250	2	BN32-80	80
3/8	BN06-60	60	3/4	BN12-300	300	2	BN32-130	130
3/8	BN06-80	80	1	BN16-50	50	2	BN32-150	150
3/8	BN06-100	100	1	BN16-80	80	2	BN32-180	180
3/8	BN06-130	130	1	BN16-100	100	2	BN32-200	200
3/8	BN06-150	150	1	BN16-130	130	2	BN32-250	250
3/8	BN06-180	180	1	BN16-150	150	2	BN32-300	300
3/8	BN06-200	200	1	BN16-180	180			
3/8	BN06-250	250	1	BN16-200	200			
3/8	BN06-300	300	1	BN16-250	250			
1/2	BN08-40	40	1	BN16-300	300			
1/2	BN08-50	50	1-1/4	BN20-50	50			
1/2	BN08-80	80	1-1/4	BN20-100	100			
1/2	BN08-100	100	1-1/4	BN20-130	130			
1/2	BN08-130	130	1-1/4	BN20-150	150			



REDUCING HOSETAIL

THREAD SIZE BSPT	HOSE SIZE	PART No
1/4	3.50	RHT0204
1/4	5.00	RHT0304
1/8	6.30	RHT0402
3/8	6.30	RHT0406
1/2	6.30	RHT0408
1/8	8.00	RHT0502
1/4	9.50	RHT0604
1/2	9.50	RHT0608
1/4	12.70	RHT0804
3/8	12.70	RHT0806
3/4	12.70	RHT0812
1	12.70	RHT0816
3/4	16.00	RHT1012
1/2	19.05	RHT1208
1	19.05	RHT1216
1/2	25.40	RHT1608
3/4	25.40	RHT1612
1-1/4	25.40	RHT1620
1-1/2	25.40	RHT1624
1	31.80	RHT2016
1-1/2	31.80	RHT2024
1	38.10	RHT2416
1-1/4	38.10	RHT2420
2	38.10	RHT2432
1-1/2	50.80	RHT3224



HOSETAIL



FEMALE HOSETAIL

THREAD SIZE BSPT	HOSE SIZE	PART No
1/8	3.50	HT02
3/16	5.00	HT03
1/4	6.30	HT04
5/16	8.00	HT05
3/8	9.50	HT06
1/2	12.70	HT08
1/2	16.00	HT10
3/4	19.05	HT12
1	25.40	HT16
1-1/4	31.80	HT20
1-1/2	38.10	HT24
2	50.80	HT32
2-1/2	63.50	HT40
3	76.20	HT48
4	101.60	HT64

THREAD SIZE BSPP	HOSE SIZE	PART No
1/4	6.30	FHT04
1/4	8.00	FHT05
3/8	9.53	FHT06
1/2	12.70	FHT08
3/4	19.10	FHT12
1	25.40	FHT16
1-1/4	31.80	FHT20
1-1/2	38.10	FHT24
2	50.80	FHT32

EXTENDED/REDUCED LENGTH NIPPLES



EXTENDED/REDUCED WELD NIPPLES OF VARIOUS LENGTHS (non standard)

THREAD SIZE BSPT	PART No	LENGTH MM	THREAD SIZE BSPT	PART No	LENGTH MM	THREAD SIZE BSPT	PART No	LENGTH MM
1/8	WN02-20	20	1/2	WN08-180	180	1-1/4	WN20-250	250
1/8	WN02-40	40	1/2	WN08-200	200	1-1/4	WN20-300	300
1/8	WN02-50	50	1/2	WN08-250	250	1-1/2	WN24-60	60
1/4	WN04-40	40	1/2	WN08-300	300	1-1/2	WN24-80	80
1/4	WN04-50	50	3/4	WN12-50	50	1-1/2	WN24-100	100
1/4	WN04-60	60	3/4	WN12-60	60	1-1/2	WN24-130	130
1/4	WN04-80	80	3/4	WN12-80	80	1-1/2	WN24-150	150
1/4	WN04-100	100	3/4	WN12-100	100	1-1/2	WN24-180	180
1/4	WN04-130	130	3/4	WN12-130	130	1-1/2	WN20-200	200
1/4	WN04-150	150	3/4	WN12-150	150	1-1/2	WN20-250	250
1/4	WN04-180	180	3/4	WN12-180	180	1-1/2	WN20-300	300
1/4	WN04-200	200	3/4	WN12-200	200	2	WN32-60	60
1/4	WN04-250	250	3/4	WN12-250	250	2	WN32-80	80
1/4	WN04-300	300	3/4	WN12-300	300	2	WN32-100	100
3/8	WN06-40	40	1	WN16-50	50	2	WN32-130	130
3/8	WN06-50	50	1	WN16-60	60	2	WN32-150	150
3/8	WN06-60	60	1	WN16-80	80	2	WN32-180	180
3/8	WN06-80	80	1	WN16-100	100	2	WN32-200	200
3/8	WN06-100	100	1	WN16-130	130	2	WN32-250	250
3/8	WN06-130	130	1	WN16-150	150	2	WN32-300	300
3/8	WN06-150	150	1	WN16-180	180			
3/8	WN06-180	180	1	WN16-200	200			
3/8	WN06-200	200	1	WN16-250	250			
3/8	WN06-250	250	1	WN16-300	300			
3/8	WN06-300	300	1-1/4	WN20-60	60			
1/2	WN08-50	50	1-1/4	WN20-80	80			
1/2	WN08-60	60	1-1/4	WN20-100	100			
1/2	WN08-80	80	1-1/4	WN20-130	130			
1/2	WN08-100	100	1-1/4	WN20-150	150			
1/2	WN08-130	130	1-1/4	WN20-180	180			
1/2	WN08-150	150	1-1/4	WN20-200	200			



FEMALE HOSETAIL
(Cone seat swivel)



HOSE JOINER

THREAD SIZE BSPP	HOSE SIZE	PART No
1/4	6.35	FHTC04
3/8	9.53	FHTC06
1/2	12.70	FHTC08
3/4	19.10	FHTC12
1	25.4	FHTC16
1-1/4	31.80	FHTC20
1-1/2	38.10	FHTC24
2	50.80	FHTC32

HOSE SIZE ID	PART No
1/4	HJ04
5/16	HJ05
3/8	HJ06
1/2	HJ08
3/4	HJ12
1	HJ16
1-1/4	HJ20
1-1/2	HJ24
2	HJ32



90° ELBOW

THREAD SIZE NPT	PART No
1/8	E02N
1/4	E04N
3/8	E06N
1/2	E08N
3/4	E12N
1	E16N
1-1/4	E20N
1-1/2	E24N
2	E32N
2-1/2	E40N
3	E48N
4	E64N

EQUAL TEE

THREAD SIZE NPT	PART No
1/8	T02N
1/4	T04N
3/8	T06N
1/2	T08N
3/4	T12N
1	T16N
1-1/4	T20N
1-1/2	T24N
2	T32N
2-1/2	T40N
3	T48N
4	T64N

STREET ELBOW

THREAD SIZE NPT	PART No
1/8	SE02N
1/4	SE04N
3/8	SE06N
1/2	SE08N
3/4	SE12N
1	SE16N
1-1/4	SE20N
1-1/2	SE24N
2	SE32N
2-1/2	SE40N
3	SE48N

45° ELBOW

THREAD SIZE NPT	PART No
1/8	EA02N
1/4	EA04N
3/8	EA06N
1/2	EA08N
3/4	EA12N
1	EA16N
1-1/4	EA20N
1-1/2	EA24N
2	EA32N
2-1/2	EA40N
3	EA48N
4	EA64N



UNION CONICAL
FEMALE / FEMALE

THREAD SIZE NPT	PART No
1/8	UC02N
1/4	UC04N
3/8	UC06N
1/2	UC08N
3/4	UC12N
1	UC16N
1-1/4	UC20N
1-1/2	UC24N
2	UC32N
2-1/2	UC40N
3	UC48N
4	UC64N

HEXAGON NIPPLE

THREAD SIZE NPT	PART No
1/8	HN02N
1/4	HN04N
3/8	HN06N
1/2	HN08N
3/4	HN12N
1	HN16N
1-1/4	HN20N
1-1/2	HN24N
2	HN32N
2-1/2	HN40N
3	HN48N
4	HN64N

HEXAGON CAP

THREAD SIZE NPT	PART No
1/8	HC02N
1/4	HC04N
3/8	HC06N
1/2	HC08N
3/4	HC12N
1	HC16N
1-1/4	HC20N
1-1/2	HC24N
2	HC32N

HEXAGON HEAD PLUG

THREAD SIZE NPT	PART No
1/8	HP02N
1/4	HP04N
3/8	HP06N
1/2	HP08N
3/4	HP12N
1	HP16N
1-1/4	HP20N
1-1/2	HP24N
2	HP32N
2-1/2	HP40N
3	HP48N
4	HP64N



SOCKET

THREAD SIZE NPT	PART No
1/8	S02N
1/4	S04N
3/8	S06N
1/2	S08N
3/4	S12N
1	S16N
1-1/4	S20N
1-1/2	S24N
2	S32N
2-1/2	S40N
3	S48N
4	S64N

HALF SOCKET

THREAD SIZE NPT	PART No
1/8	HS02N
1/4	HS04N
3/8	HS06N
1/2	HS08N
3/4	HS12N
1	HS16N
1-1/4	HS20N
1-1/2	HS24N
2	HS32N

ROUND CAP

THREAD SIZE NPT	PART No
2-1/2	RC40N
3	RC48N
4	RC64N

**OTHER ITEMS AND SIZES ARE
AVAILABLE UPON REQUEST**



REDUCING NIPPLE

REDUCING SOCKET

REDUCING BUSH
MALE/FEMALE

THREAD SIZE NPT	PART No
1/4 X 1/8	RN0402N
3/8 X 1/4	RN0604N
1/2 X 1/4	RN0804N
1/2 X 3/8	RN0806N
3/4 X 1/4	RN1204N
3/4 X 3/8	RN1206N
3/4 X 1/2	RN1208N
1 X 1/2	RN1608N
1 X 3/4	RN1612N
1-1/4 X 1	RN2016N
1-1/2 X 1	RN2416N
1-1/2 X 1-1/4	RN2420N
2 X 1	RN3216N
2 X 1-1/4	RN3220N
2 X 1-1/2	RN3224N
2-1/2 X 2	RN4032N
3 X 2	RN4832N
3 X 2-1/2	RN4840N
4 X 3	RN6448N

THREAD SIZE NPT	PART No
1/4 X 1/8	RS0402N
3/8 X 1/4	RS0604N
1/2 X 1/4	RS0804N
1/2 X 3/8	RS0806N
3/4 X 3/8	RS1206N
3/4 X 1/2	RS1208N
1 X 1/2	RS1608N
1 X 3/4	RS1612N
1-1/4 X 3/4	RS2012N
1-1/4 X 1	RS2016N
1-1/2 X 1	RS2416N
1-1/2 X 1-1/4	RS2420N
2 X 1	RS3216N
2 X 1-1/4	RS3220N
2 X 1-1/2	RS3224N
2-1/2 X 2	RS4032N
3 X 2	RS4832N
3 X 2-1/2	RS4840N
4 X 2	RS6432N
4 X 3	RS6448N

THREAD SIZE NPT	PART No
1/4 X 1/8	RB0402N
3/8 X 1/4	RB0604N
1/2 X 1/4	RB0804N
1/2 X 3/8	RB0806N
3/4 X 1/4	RB1204N
3/4 X 3/8	RB1206N
3/4 X 1/2	RB1208N
1 X 1/2	RB1608N
1 X 3/4	RB1612N
1-1/4 X 3/4	RB2012N
1-1/4 X 1	RB2016N
1-1/2 X 3/4	RB2412N
1-1/2 X 1	RB2416N
1-1/2 X 1-1/4	RB2420N
2 X 1	RB3216N
2 X 1-1/4	RB3220N
2 X 1-1/2	RB3224N
2-1/2 X 1-1/2	RB4024N
2-1/2 X 2	RB4032N
3 X 2	RB4832N
3 X 2-1/2	RB4840N
4 X 2	RB6432N
4 X 2-1/2	RB6440N
4 X 3	RB6448N



BARREL NIPPLE

WELD NIPPLE

HOSETAIL

THREAD SIZE NPT	PART No	LENGTH
1/8	BN02N	30
1/4	BN04N	30
3/8	BN06N	40
1/2	BN08N	60
3/4	BN12N	60
1	BN16N	60
1-1/4	BN20N	80
1-1/2	BN24N	80
2	BN32N	100
2-1/2	BN40N	100
3	BN48N	120
4	BN64N	120

THREAD SIZE NPT	PART No	LENGTH
1/8	WN02N	30
1/4	WN04N	30
3/8	WN06N	30
1/2	WN08N	35
3/4	WN12N	40
1	WN16N	40
1-1/4	WN20N	50
1-1/2	WN24N	50
2	WN32N	50
2-1/2	WN40N	60
3	WN48N	70
4	WN64N	80

THREAD SIZE NPT	HOSE SIZE	PART No
1/4	6.30	HT04N
5/16	8.00	HT05N
3/8	9.50	HT06N
1/2	12.70	HT08N
3/4	19.05	HT12N
1	25.40	HT16N
1-1/4	31.80	HT20N
1-1/2	38.10	HT24N
2	50.80	HT32N



Product information

- ASTM A182 316/L Stainless Steel
- Dimensions to ANSI B16.11/BS3799
- Sizes 1/4" to 2"
- Larger sizes available
- Dimensions in mm
- NPT threaded to ANSI B2.1
- BSPT threaded to ISO 7-1
- Socket weld ends (SW)
- OD Socket weld ends available
- Other grades and threads available

Index

DESCRIPTION	PAGE			
	NPT	BSPT	SW	BSPP
Elbow 90°	2.2	2.5	2.4	
Street elbow 90°	2.2			
Tee	2.2	2.5	2.4	
Elbow 45°	2.2		2.4	
Cross	2.2		2.4	
Union conical female/female	2.2	2.5	2.4	
Union conical male/female	2.2			
Hexagon head plug	2.2	2.5		
Hexagon nipple	2.2	2.5		
Reducing nipple	2.2	2.6		
Reducing bush	2.2	2.6		
Reducing coupling	2.3		2.4	
Full coupling	2.3	2.5	2.4	2.6
Half coupling	2.3	2.6	2.4	2.6
Square head plug	2.3	2.5		
Round cap	2.3			
Reducing insert			2.5	
Barrel nipple	2.3			



90° ELBOW

THREAD SIZE NPT	PART No
1/4	3E04N
3/8	3E06N
1/2	3E08N
3/4	3E12N
1	3E16N
1-1/4	3E20N
1-1/2	3E24N
2	3E32N



STREET ELBOW

THREAD SIZE NPT	PART No
1/4	3SE04N
3/8	3SE06N
1/2	3SE08N
3/4	3SE12N
1	3SE16N
1-1/4	3SE20N
1-1/2	3SE24N
2	3SE32N



EQUAL TEE

THREAD SIZE NPT	PART No
1/4	3T04N
3/8	3T06N
1/2	3T08N
3/4	3T12N
1	3T16N
1-1/4	3T20N
1-1/2	3T24N
2	3T32N



45° ELBOW

THREAD SIZE NPT	PART No
1/4	3EA04N
3/8	3EA06N
1/2	3EA08N
3/4	3EA12N
1	3EA16N
1-1/4	3EA20N
1-1/2	3EA24N
2	3EA32N



CROSS

THREAD SIZE NPT	PART No
1/4	3C04N
3/8	3C06N
1/2	3C08N
3/4	3C12N
1	3C16N
1-1/4	3C20N
1-1/2	3C24N
2	3C32N



F/F UNION CONICAL

THREAD SIZE NPT	PART No
1/4	3UC04N
3/8	3UC06N
1/2	3UC08N
3/4	3UC12N
1	3UC16N
1-1/4	3UC20N
1-1/2	3UC24N
2	3UC32N



M/F UNION CONICAL

THREAD SIZE NPT	PART No
1/4	3UCMF04N
3/8	3UCMF06N
1/2	3UCMF08N
3/4	3UCMF12N
1	3UCMF16N
1-1/4	3UCMF20N
1-1/2	3UCMF24N
2	3UCMF32N



HEXAGON HEAD PLUG

THREAD SIZE NPT	PART No
1/8	3HP02N
1/4	3HP04N
3/8	3HP06N
1/2	3HP08N
3/4	3HP12N
1	3HP16N
1-1/4	3HP20N
1-1/2	3HP24N
2	3HP32N



HEXAGON NIPPLE

THREAD SIZE NPT	PART No
1/8	3HN02N
1/4	3HN04N
3/8	3HN06N
1/2	3HN08N
3/4	3HN12N
1	3HN16N
1-1/4	3HN20N
1-1/2	3HN24N
2	3HN32N



REDUCING NIPPLE

THREAD SIZE NPT	PART No
1/4 X 1/8	3RN0402N
3/8 X 1/8	3RN0602N
3/8 X 1/4	3RN0604N
1/2 X 1/8	3RN0802N
1/2 X 1/4	3RN0804N
1/2 X 3/8	3RN0806N
3/4 X 1/4	3RN1204N
3/4 X 3/8	3RN1206N
3/4 X 1/2	3RN1208N
1 X 3/8	3RN1606N
1 X 1/2	3RN1608N
1 X 3/4	3RN1612N
1-1/4 X 1/2	3RN2008N
1-1/4 X 3/4	3RN2012N
1-1/4 X 1	3RN2016N
1-1/2 X 3/4	3RN2412N
1-1/2 X 1	3RN2416N
1-1/2 X 1-1/4	3RN2420N
2 X 1	3RN3216N
2 X 1-1/4	3RN3220N
2 X 1-1/2	3RN3224N



REDUCING BUSH

THREAD SIZE NPT	PART No
1/4 X 1/8	3RB0402N
3/8 X 1/8	3RB0602N
3/8 X 1/4	3RB0604N
1/2 X 1/8	3RB0802N
1/2 X 1/4	3RB0804N
1/2 X 3/8	3RB0806N
3/4 X 1/4	3RB1204N
3/4 X 3/8	3RB1206N
3/4 X 1/2	3RB1208N
1 X 3/8	3RB1606N
1 X 1/2	3RB1608N
1 X 3/4	3RB1612N
1-1/4 X 1/2	3RB2008N
1-1/4 X 3/4	3RB2012N
1-1/4 X 1	3RB2016N
1-1/2 X 3/4	3RB2412N
1-1/2 X 1	3RB2416N
1-1/2 X 1-1/4	3RB2420N
2 X 1	3RB3216N
2 X 1-1/4	3RB3220N
2 X 1-1/2	3RB3224N



REDUCING BUSH NPT/BSPP

THREAD SIZE NPT/BSPP	PART No
1/4 X 1/8	3RB0402NP
3/8 X 1/4	3RB0604NP
1/2 X 1/4	3RB0804NP
1/2 X 3/8	3RB0806NP
3/4 X 3/8	3RB1206NP
3/4 X 1/2	3RB1208NP
1 X 1/2	3RB1608NP
1 X 3/4	3RB1612NP



ROUND CAP

FULL COUPLING

HALF COUPLING

REDUCING COUPLING

THREAD SIZE NPT	PART No
1/8	3RC02N
1/4	3RC04N
3/8	3RC06N
1/2	3RC08N
3/4	3RC12N
1	3RC16N
1-1/4	3RC20N
1-1/2	3RC24N
2	3RC32N

THREAD SIZE NPT	PART No
1/8	3S02N
1/4	3S04N
3/8	3S06N
1/2	3S08N
3/4	3S12N
1	3S16N
1-1/4	3S20N
1-1/2	3S24N
2	3S32N

THREAD SIZE NPT	PART No
1/8	3HS02N
1/4	3HS04N
3/8	3HS06N
1/2	3HS08N
3/4	3HS12N
1	3HS16N
1-1/4	3HS20N
1-1/2	3HS24N
2	3HS32N

THREAD SIZE NPT	PART No
1/4 X 1/8	3RS0402N
3/8 X 1/4	3RS0604N
1/2 X 1/4	3RS0804N
1/2 X 3/8	3RS0806N
3/4 X 3/8	3RS1206N
3/4 X 1/2	3RS1208N
1 X 1/2	3RS1608N
1 X 3/4	3RS1612N
1-1/4 X 3/4	3RS2012N
1-1/4 X 1	3RS2016N
1-1/2 X 1	3RS2416N
1-1/2 X 1-1/4	3RS2420N
2 X 1	3RS3216N
2 X 1-1/4	3RS3220N
2 X 1-1/2	3RS3224N



SQUARE HEAD PLUG

BARREL NIPPLE SCHEDULE 80

THREAD SIZE NPT	PART No
1/8	3SP02N
1/4	3SP04N
3/8	3SP06N
1/2	3SP08N
3/4	3SP12N
1	3SP16N
1-1/4	3SP20N
1-1/2	3SP24N
2	3SP32N

THREAD SIZE NPT	PART No	LENGTH
1/8	3BN02N	30MM
1/4	3BN04N	30MM
3/8	3BN06N	40MM
1/2	3BN08N	60MM
3/4	3BN12N	60MM
1	3BN16N	60MM
1-1/4	3BN20N	80MM
1-1/2	3BN24N	80MM
2	3BN32N	100MM



LOOKING FOR COMPRESSION FITTINGS?
TURN TO SECTION 4 FOR SINGLE, OR SECTION 5 FOR TWIN FERRULE.

SOCKET WELD



90° ELBOW



EQUAL TEE



CROSS



45° ELBOW

SIZE NB	PART No
1/4	3E04SW
3/8	3E06SW
1/2	3E08SW
3/4	3E12SW
1	3E16SW
1-1/4	3E20SW
1-1/2	3E24SW
2	3E32SW

SIZE NB	PART No
1/4	3T04SW
3/8	3T06SW
1/2	3T08SW
3/4	3T12SW
1	3T16SW
1-1/4	3T20SW
1-1/2	3T24SW
2	3T32SW

SIZE NB	PART No
1/4	3C04SW
3/8	3C06SW
1/2	3C08SW
3/4	3C12SW
1	3C16SW
1-1/4	3C20SW
1-1/2	3C24SW
2	3C32SW

SIZE NB	PART No
1/4	3EA04SW
3/8	3EA06SW
1/2	3EA08SW
3/4	3EA12SW
1	3EA16SW
1-1/4	3EA20SW
1-1/2	3EA24SW
2	3EA32SW



F/F UNION CONICAL



FULL COUPLING



HALF COUPLING



REDUCING COUPLING

SIZE NB	PART No
1/4	3UC04SW
3/8	3UC06SW
1/2	3UC08SW
3/4	3UC12SW
1	3UC16SW
1-1/4	3UC20SW
1-1/2	3UC24SW
2	3UC32SW

SIZE NB	PART No
1/4	3S04SW
3/8	3S06SW
1/2	3S08SW
3/4	3S12SW
1	3S16SW
1-1/4	3S20SW
1-1/2	3S24SW
2	3S32SW

SIZE NB	PART No
1/4	3HS04SW
3/8	3HS06SW
1/2	3HS08SW
3/4	3HS12SW
1	3HS16SW
1-1/4	3HS20SW
1-1/2	3HS24SW
2	3HS32SW

SIZE NB	PART No
1/4 X 1/8	3RS0402SW
3/8 X 1/4	3RS0604SW
1/2 X 1/4	3RS0804SW
1/2 X 3/8	3RS0806SW
3/4 X 3/8	3RS1206SW
3/4 X 1/2	3RS1208SW
1 X 1/2	3RS1608SW
1 X 3/4	3RS1612SW
1-1/4 X 1	3RS2016SW
1-1/2 X 1	3RS2416SW
1-1/2 X 1-1/4	3RS2420SW
2 X 1	3RS3216SW
2 X 1-1/4	3RS3220SW
2 X 1-1/2	3RS3224SW

LARGER SIZES ARE AVAILABLE
ON REQUEST





REDUCING INSERTS

SIZE NB	PART No
1/4 X 1/8	3RI0402SW
3/8 X 1/8	3RI0602SW
3/8 X 1/4	3RI0604SW
1/2 X 1/4	3RI0804SW
1/2 X 3/8	3RI0806SW
3/4 X 3/8	3RI1206SW
3/4 X 1/2	3RI1208SW
1 X 1/2	3RI1608SW
1 X 3/4	3RI1612SW
1-1/4 X 3/4	3RI2012SW
1-1/4 X 1	3RI2016SW
1-1/2 X 3/4	3RI2412SW
1-1/2 X 1	3RI2416SW
1-1/2 X 1-1/4	3RI2420SW
2 X 1	3RI3216SW
2 X 1-1/4	3RI3220SW
2 X 1-1/2	3RI3224SW

NEED BUTT WELD 316 OR 304?
VISIT PAGE 3.1 FOR MORE INFORMATION



BSPT



90° ELBOW

THREAD SIZE BSPT	PART No
1/4	3E04T
3/8	3E06T
1/2	3E08T
3/4	3E12T
1	3E16T
1-1/4	3E20T
1-1/2	3E24T
2	3E32T



Equal Tee

THREAD SIZE BSPT	PART No
1/4	3T04T
3/8	3T06T
1/2	3T08T
3/4	3T12T
1	3T16T
1-1/4	3T20T
1-1/2	3T24T
2	3T32T



F/F UNION CONICAL

THREAD SIZE BSPT	PART No
1/4	3UC04T
3/8	3UC06T
1/2	3UC08T
3/4	3UC12T
1	3UC16T
1-1/4	3UC20T
1-1/2	3UC24T
2	3UC32T



HEXAGON NIPPLE

THREAD SIZE BSPT	PART No
1/8	3HN02T
1/4	3HN04T
3/8	3HN06T
1/2	3HN08T
3/4	3HN12T
1	3HN16T
1-1/4	3HN20T
1-1/2	3HN24T
2	3HN32T



HEXAGON HEAD PLUG

THREAD SIZE BSPT	PART No
1/8	3HP02T
1/4	3HP04T
3/8	3HP06T
1/2	3HP08T
3/4	3HP12T
1	3HP16T
1-1/4	3HP20T
1-1/2	3HP24T
2	3HP32T



FULL COUPLING

THREAD SIZE BSPT	PART No
1/8	3S02T
1/4	3S04T
3/8	3S06T
1/2	3S08T
3/4	3S12T
1	3S16T
1-1/4	3S20T
1-1/2	3S24T
2	3S32T



SQUARE HEAD PLUG

THREAD SIZE BSPT	PART No
1/8	3SP02T
1/4	3SP04T
3/8	3SP06T
1/2	3SP08T
3/4	3SP12T
1	3SP16T
1-1/4	3SP20T
1-1/2	3SP24T
2	3SP32T



REDUCING BUSH BSPT

SIZE	PART No
1/4 X 1/8	3RB0402T
3/8 X 1/8	3RB0602T
3/8 X 1/4	3RB0604T
1/2 X 1/8	3RB0802T
1/2 X 1/4	3RB0804T
1/2 X 3/8	3RB0806T
3/4 X 1/4	3RB1204T
3/4 X 3/8	3RB1206T
3/4 X 1/2	3RB1208T
1 X 3/8	3RB1606T
1 X 1/2	3RB1608T
1 X 3/4	3RB1612T
1-1/4 X 1/2	3RB2008T
1-1/4 X 3/4	3RB2012T
1-1/4 X 1	3RB2016T
1-1/2 X 3/4	3RB2412T
1-1/2 X 1	3RB2416T
1-1/2 X 1-1/4	3RB2420T
2 X 1	3RB3216T
2 X 1-1/4	3RB3220T
2 X 1-1/2	3RB3224T

REDUCING BUSH BSPT/NPT

THREAD SIZE BSPT/NPT	PART No
1/4 X 1/8	3RB0402TN
3/8 X 1/4	3RB0604TN
1/2 X 1/4	3RB0804TN
1/2 X 3/8	3RB0806TN
3/4 X 3/8	3RB1206TN
3/4 X 1/2	3RB1208TN
1 X 1/2	3RB1608TN
1 X 3/4	3RB1612TN

REDUCING NIPPLE BSPT

SIZE BSPT	PART No
1/4 X 1/8	3RN0402T
3/8 X 1/4	3RN0604T
1/2 X 1/4	3RN0804T
1/2 X 3/8	3RN0806T
3/4 X 3/8	3RN1206T
3/4 X 1/2	3RN1208T
1 X 1/2	3RN1608T
1 X 3/4	3RN1612T
1-1/4 X 3/4	3RN2012T
1-1/4 X 1	3RN2016T
1-1/2 X 1	3RN2416T
1-1/2 X 1-1/4	3RN2420T
2 X 1	3RN3216T
2 X 1-1/4	3RN3220T
2 X 1-1/2	3RN3224T

HALF COUPLING BSPT

THREAD SIZE BSPT	PART No
1/8	3HS02T
1/4	3HS04T
3/8	3HS06T
1/2	3HS08T
3/4	3HS12T
1	3HS16T
1-1/4	3HS20T
1-1/2	3HS24T
2	3HS32T

BSPP



FULL COUPLING

THREAD SIZE BSPP	PART No
1/8	3S02P
1/4	3S04P
3/8	3S06P
1/2	3S08P
3/4	3S12P
1	3S16P
1-1/4	3S20P
1-1/2	3S24P
2	3S32P

HALF COUPLING

THREAD SIZE BSPP	PART No
1/8	3HS02P
1/4	3HS04P
3/8	3HS06P
1/2	3HS08P
3/4	3HS12P
1	3HS16P
1-1/4	3HS20P
1-1/2	3HS24P
2	3HS32P



Product information

- Conforming to ASTM A403, ANSI B16.9, ANSI B16.28 and MSS SP-43
- 316/L and 304/L Stainless Steel welded
- Schedule 10S and 40S wall thickness
- Sizes 1/2" to 10"
- Larger sizes available
- Thicker wall sizes available
- Seamless fittings available

Index

DESCRIPTION	PAGE
	316 304
Long radius 90° elbow	3.2 3.5
Short radius 90° elbow	3.2 3.5
Long radius 45° elbow	3.2 3.5
Equal tee	3.2 3.5
Reducing tee	3.4 3.6
Concentric reducer	3.3 3.6
Eccentric reducer	3.3
Cap	3.2 3.5
Stub end	3.2 3.5



LONG RADIUS ELBOW 90°

SIZE	PART No	
	SCH 10s	SCH 40s
1/2	BE08/1	BE08/4
3/4	BE12/1	BE12/4
1	BE16/1	BE16/4
1-1/4	BE20/1	BE20/4
1-1/2"	BE24/1	BE24/4
2	BE32/1	BE32/4
2-1/2	BE40/1	BE40/4
3	BE48/1	BE48/4
4	BE64/1	BE64/4
5	BE80/1	BE80/4
6	BE96/1	BE96/4
8	BE128/1	BE128/4
10	BE160/1	

SHORT RADIUS ELBOW 90°

SIZE	PART No	
	SCH 10s	SCH 40s
3/4	BES12/1	-
1	BES16/1	BES16/4
1-1/4	BES20/1	BES20/4
1-1/2"	BES24/1	BES24/4
2	BES32/1	BES32/4
2-1/2	BES40/1	BES40/4
3	BES48/1	BES48/4
4	BES64/1	BES64/4
5	BES80/1	BES80/4
6	BES96/1	BES96/4
8	BES128/1	BES128/4
10	BES160/1	

LONG RADIUS ELBOW 45°

SIZE	PART No	
	SCH 10s	SCH 40s
1/2	BEA08/1	BEA08/4
3/4	BEA12/1	BEA12/4
1	BEA16/1	BEA16/4
1-1/4	BEA20/1	BEA20/4
1-1/2"	BEA24/1	BEA24/4
2	BEA32/1	BEA32/4
2-1/2	BEA40/1	BEA40/4
3	BEA48/1	BEA48/4
4	BEA64/1	BEA64/4
5	BEA80/1	BEA80/4
6	BEA96/1	BEA96/4
8	BEA128/1	BEA128/4
10	BEA160/1	



EQUAL TEE

CAPS

STUB ENDS
(MSS Type A)

SIZE	PART No	
	SCH 10s	SCH 40s
1/2	BT08/1	BT08/4
3/4	BT12/1	BT12/4
1	BT16/1	BT16/4
1-1/4	BT20/1	BT20/4
1-1/2"	BT24/1	BT24/4
2	BT32/1	BT32/4
2-1/2	BT40/1	BT40/4
3	BT48/1	BT48/4
4	BT64/1	BT64/4
5	BT80/1	BT80/4
6	BT96/1	BT96/4
8	BT128/1	BT128/4
10	BT160/1	

SIZE	PART No	
	SCH 10s	SCH 40s
1/2	BC08/1	BC08/4
3/4	BC12/1	BC12/4
1	BC16/1	BC16/4
1-1/4	BC20/1	BC20/4
1-1/2"	BC24/1	BC24/4
2	BC32/1	BC32/4
2-1/2	BC40/1	BC40/4
3	BC48/1	BC48/4
4	BC64/1	BC64/4
5	BC80/1	BC80/4
6	BC96/1	BC96/4
8	BC128/1	BC128/4
10	BC160/1	

SIZE	PART No	
	SCH 10s	SCH 40s
1/2	BSE08/1	BSE08/4
3/4	BSE12/1	BSE12/4
1	BSE16/1	BSE16/4
1-1/4	BSE20/1	BSE20/4
1-1/2"	BSE24/1	BSE24/4
2	BSE32/1	BSE32/4
2-1/2	BSE40/1	BSE40/4
3	BSE48/1	BSE48/4
4	BSE64/1	BSE64/4
5	BSE80/1	BSE80/4
6	BSE96/1	BSE96/4
8	BSE128/1	
10	BSE160/1	

ALL ITEMS ABOVE ARE 316/L
FOR 304/L PLEASE SEE PAGE 3.5

Schedule 10S

NB	OD MM	WALL THICKNESS MM
1/2	21.34	2.11
3/4	26.67	2.11
1	33.40	2.77
1-1/4	42.16	2.77
1-1/2"	48.26	2.77
2	60.33	2.77
2-1/2	73.03	3.05
3	88.90	3.05
4	114.30	3.05
5	141.30	3.40
6	168.28	3.40
8	219.08	3.76
10	273.05	4.19

Schedule 40S

NB	OD mm	Thickness mm
1/8	10.29	2.00
1/4	13.72	2.24
3/8	17.15	2.31
1/2	21.34	2.77
3/4	26.67	2.87
1	33.40	3.38
1-1/4	42.16	3.56
1-1/2"	48.26	3.68
2	60.33	3.91
2-1/2	73.03	5.16
3	88.90	5.49
4	114.30	6.02
5	141.30	6.55
6	168.28	7.11
8	219.08	8.18



CONCENTRIC REDUCERS

SIZE	PART No	
	SCH 10s	SCH 40s
3/4 X 1/2	BCR1208/1	BCR1208/4
1 X 1/2	BCR1608/1	BCR1608/4
1 X 3/4	BCR1612/1	BCR1612/4
1-1/4 X 1/2	BCR2008/1	-
1-1/4 X 3/4	BCR2012/1	-
1-1/4 X 1	BCR2016/1	BCR2016/4
1-1/2 X 1/2	BCR2408/1	BCR2408/4
1-1/2 X 3/4	BCR2412/1	BCR2412/4
1-1/2 X 1	BCR2416/1	BCR2416/4
1-1/2 X 1-1/4	BCR2420/1	BCR2420/4
2 X 1/2	BCR3208/1	-
2 X 3/4	BCR3212/1	BCR3212/4
2 X 1	BCR3216/1	BCR3216/4
2 X 1-1/4	BCR3220/1	BCR3220/4
2 X 1-1/2	BCR3224/1	BCR3224/4
2-1/2 X 1-1/2	BCR4024/1	BCR4024/4
2-1/2 X 2	BCR4032/1	BCR4032/4
3 X 1	BCR4816/1	-
3 X 1-1/2	BCR4824/1	BCR4824/4
3 X 2	BCR4832/1	BCR4832/4
3 X 2-1/2	BCR4840/1	BCR4840/4
4 X 1-1/2	BCR6424/1	-
4 X 2	BCR6432/1	BCR6432/4
4 X 2-1/2	BCR6440/1	BCR6440/4
4 X 3	BCR6448/1	BCR6448/4
5 X 3	BCR8048/1	BCR8048/4
5 X 4	BCR8064/1	BCR8064/4
6 X 3	BCR9648/1	BCR9648/4
6 X 4	BCR9664/1	BCR9664/4
6 X 5	BCR9680/1	BCR9680/4
8 X 4	BCR12864/1	BCR12864/4
8 X 5	BCR12880/1	BCR12880/4
8 X 6	BCR12896/1	BCR12896/4
10 X 6	BCR16096/1	-
10 X 8	BCR160128/1	-

ECCENTRIC REDUCERS

SIZE	PART No	
	SCH 10s	SCH 40s
3/4 X 1/2	BER1208/1	BER1208/4
1 X 1/2	BER1608/1	BER1608/4
1 X 3/4	BER1612/1	BER1612/4
1-1/4 X 1	BER2016/1	BER2016/4
1-1/2 X 1/2	BER2408/1	BER2408/4
1-1/2 X 3/4	BER2412/1	BER2412/4
1-1/2 X 1	BER2416/1	BER2416/4
1-1/2 X 1-1/4	BER2420/1	BER2420/4
2 X 1/2	BER3208/1	-
2 X 3/4	BER3212/1	BER3212/4
2 X 1	BER3216/1	BER3216/4
2 X 1-1/4	BER3220/1	BER3220/4
2 X 1-1/2	BER3224/1	BER3224/4
2-1/2 X 1	BER4016/1	-
2-1/2 X 1-1/2	BER4024/1	BER4024/4
2-1/2 X 2	BER4032/1	BER4032/4
3 X 1	BER4816/1	-
3 X 1-1/2	BER4824/1	BER4824/4
3 X 2	BER4832/1	BER4832/4
3 X 2-1/2	BER4840/1	BER4840/4
4 X 2	BER6432/1	BER6432/4
4 X 2-1/2	BER6440/1	BER6440/4
4 X 3	BER6448/1	BER6448/4
5 X 3	BER8048/1	BER8048/4
5 X 4	BER8064/1	BER8064/4
6 X 3	BER9648/1	BER9648/4
6 X 4	BER9664/1	BER9664/4
6 X 5	BER9680/1	BER9680/4
8 X 4	BER12864/1	-
8 X 5	BER12880/1	-
8 X 6	BER12896/1	-

ALL ITEMS ABOVE ARE 316/L
FOR 304/L PLEASE SEE PAGE 3.5

NEED PIPE TO GO WITH YOUR FITTINGS?
GO TO PAGE 9.1 TO SEE OUR RANGE
OF 316 AND 304 NOMINAL BORE.





REDUCING TEE

SIZE	PART No	
	SCH 10s	SCH 40s
3/4 X 1/2	BRT1208/1	BRT1208/4
1 X 1/2	BRT1608/1	BRT1608/4
1 X 3/4	BRT1612/1	BRT1612/4
1-1/4 X 1	BRT2016/1	BRT2016/4
1-1/2 X 1/2	BRT2408/1	-
1-1/2 X 3/4	BRT2412/1	-
1-1/2 X 1	BRT2416/1	BRT2416/4
1-1/2 X 1-1/4	BRT2420/1	BRT2420/4
2 X 1/2	BRT3208/1	-
2 X 3/4	BRT3212/1	-
2 X 1	BRT3216/1	BRT3216/4
2 X 1-1/4	BRT3220/1	BRT3220/4
2 X 1-1/2	BRT3224/1	BRT3224/4
2-1/2 X 1-1/2	BRT4024/1	BRT4024/4
2-1/2 X 2	BRT4032/1	BRT4032/4
3 X 1	BRT4816/1	-
3 X 1-1/2	BRT4824/1	BRT4824/4
3 X 2	BRT4832/1	BRT4832/4
3 X 2-1/2	BRT4840/1	BRT4840/4
4 X 1-1/2	BRT6424/1	-
4 X 2	BRT6432/1	BRT6432/4
4 X 2-1/2	BRT6440/1	BRT6440/4
4 X 3	BRT6448/1	BRT6448/4
5 X 3	BRT8048/1	BRT8048/4
5 X 4	BRT8064/1	BRT8064/4
6 X 3	BRT9648/1	BRT9648/4
6 X 4	BRT9664/1	BRT9664/4
6 X 5	BRT9680/1	BRT9680/4
8 X 4	BRT12864/1	-
8 X 5	BRT12880/1	-
8 X 6	BRT12896/1	-
10 X 6	BRT16096/1	-
10 X 8	BRT160128/1	-

ALL ITEMS ABOVE ARE 316/L
FOR 304/L PLEASE SEE PAGE 3.5

PIPE FOR BUTT WELD



NOMINAL BORE PIPE (NB)

SIZE	PART No	
	SCH 10s	SCH 40s
1/2	0.5S10316W	0.5S40316W
3/4	0.75S10316W	0.75S40316W
1	1.0S10316W	1.0S40316W
1-1/4	1.25S10316W	1.25S40316W
1-1/2	1.5S10316W	1.5S40316W
2	2.0S10316W	2.0S40316W
2-1/2	2.5S10316W	2.5S40316W
3	3.0S10316W	3.0S40316W
4	4.0S10316W	4.0S40316W
5	5.0S10316W	5.0S40316W
6	6.0S10316W	6.0S40316W
8	8.0S10316W	8.0S40316W

FOR FLANGES PLEASE SEE PAGE 8.1





LONG RADIUS ELBOW 90°

SHORT RADIUS ELBOW 90°

LONG RADIUS ELBOW 45°

SIZE	PART No	
	SCH 10S	SCH 40S
1/2	BE08/1-304	BE08/4-304
3/4	BE12/1-304	BE12/4-304
1	BE16/1-304	BE16/4-304
1-1/4	BE20/1-304	BE20/4-304
1-1/2"	BE24/1-304	BE24/4-304
2	BE32/1-304	BE32/4-304
2-1/2	BE40/1-304	BE40/4-304
3	BE48/1-304	BE48/4-304
4	BE64/1-304	BE64/4-304
5	BE80/1-304	BE80/4-304
6	BE96/1-304	BE96/4-304
8	BE128/1-304	-
10	BE160/1-304	-

SIZE	PART No	
	SCH 10S	SCH 40S
1	BES16/1-304	BES16/4-304
1-1/4	BES20/1-304	BES20/4-304
1-1/2"	BES24/1-304	BES24/4-304
2	BES32/1-304	BES32/4-304
2-1/2	BES40/1-304	BES40/4-304
3	BES48/1-304	BES48/4-304
4	BES64/1-304	BES64/4-304
5	BES80/1-304	BES80/4-304
6	BES96/1-304	BES96/4-304
8	BES128/1-304	-
10	BES160/1-304	-

SIZE	PART No	
	SCH 10S	SCH 40S
1/2	BEA08/1-304	BEA08/4-304
3/4	BEA12/1-304	BEA12/4-304
1	BEA16/1-304	BEA16/4-304
1-1/4	BEA20/1-304	BEA20/4-304
1-1/2"	BEA24/1-304	BEA24/4-304
2	BEA32/1-304	BEA32/4-304
2-1/2	BEA40/1-304	BEA40/4-304
3	BEA48/1-304	BEA48/4-304
4	BEA64/1-304	BEA64/4-304
5	BEA80/1-304	BEA80/4-304
6	BEA96/1-304	BEA96/4-304
8	BEA128/1-304	-
10	BEA160/1-304	-



EQUAL TEE SCH 10s

CAPS

STUB ENDS
(MSS Type A)

SIZE	PART No	
	SCH 10S	SCH 40S
1/2	BT08/1-304	BT08/4-304
3/4	BT12/1-304	BT12/4-304
1	BT16/1-304	BT16/4-304
1-1/4	BT20/1-304	BT20/4-304
1-1/2"	BT24/1-304	BT24/4-304
2	BT32/1-304	BT32/4-304
2-1/2	BT40/1-304	BT40/4-304
3	BT48/1-304	BT48/4-304
4	BT64/1-304	BT64/4-304
5	BT80/1-304	BT80/4-304
6	BT96/1-304	BT96/4-304
8	BT128/1-304	-
10	BT160/1-304	-

SIZE	PART No	
	SCH 10s	SCH 40S
1/2	BC08/1-304	BC08/4-304
3/4	BC12/1-304	BC12/4-304
1	BC16/1-304	BC16/4-304
1-1/4	BC20/1-304	BC20/4-304
1-1/2"	BC24/1-304	BC24/4-304
2	BC32/1-304	BC32/4-304
2-1/2	BC40/1-304	BC40/4-304
3	BC48/1-304	BC48/4-304
4	BC64/1-304	BC64/4-304
5	BC80/1-304	BC80/4-304
6	BC96/1-304	BC96/4-304
8	BC128/1-304	-
10	BC160/1-304	-

SIZE	PART No	
	SCH 10S	SCH 40S
1/2	BSE08/1-304	BSE08/4-304
3/4	BSE12/1-304	BSE12/4-304
1	BSE16/1-304	BSE16/4-304
1-1/4	BSE20/1-304	BSE20/4-304
1-1/2"	BSE24/1-304	BSE24/4-304
2	BSE32/1-304	BSE32/4-304
2-1/2	BSE40/1-304	BSE40/4-304
3	BSE48/1-304	BSE48/4-304
4	BSE64/1-304	BSE64/4-304
5	BSE80/1-304	BSE80/4-304
6	BSE96/1-304	BSE96/4-304
8	BSE128/1-304	-
10	BSE160/1-304	-

ALL ITEMS ABOVE ARE 304/L STAINLESS STEEL

WE ALSO KEEP A RANGE OF
BUTT WELD AND SOCKET
WELD VALVES

VISIT PAGE 6.2 FOR MORE
INFORMATION





CONCENTRIC REDUCERS



REDUCING TEE

SIZE	PART No	
	SCH 10S	SCH 40S
3/4 X 1/2	BCR1208/1-304	BCR1208/4-304
1 X 1/2	BCR1608/1-304	BCR1608/4-304
1 X 3/4	BCR1612/1-304	BCR1612/4-304
1-1/4 X 1/2	BCR2008/1-304	-
1-1/4 X 3/4	BCR2012/1-304	-
1-1/4 X 1	BCR2016/1-304	BCR2016/4-304
1-1/2 X 1/2	BCR2408/1-304	BCR2408/4-304
1-1/2 X 3/4	BCR2412/1-304	BCR2412/4-304
1-1/2 X 1	BCR2416/1-304	BCR2416/4-304
1-1/2 X 1-1/4	BCR2420/1-304	BCR2420/4-304
2 X 1/2	BCR3208/1-304	-
2 X 3/4	BCR3212/1-304	BCR3212/4-304
2 X 1	BCR3216/1-304	BCR3216/4-304
2 X 1-1/4	BCR3220/1-304	BCR3220/4-304
2 X 1-1/2	BCR3224/1-304	BCR3224/4-304
2-1/2 X 1-1/2	BCR4024/1-304	BCR4024/4-304
2-1/2 X 2	BCR4032/1-304	BCR4032/4-304
3 X 1	BCR4816/1-304	-
3 X 1-1/2	BCR4824/1-304	BCR4824/4-304
3 X 2	BCR4832/1-304	BCR4832/4-304
3 X 2-1/2	BCR4840/1-304	BCR4840/4-304
4 X 1-1/2	BCR6424/1-304	-
4 X 2	BCR6432/1-304	BCR6432/4-304
4 X 2-1/2	BCR6440/1-304	BCR6440/4-304
4 X 3	BCR6448/1-304	BCR6448/4-304
5 X 3	BCR8048/1-304	BCR8048/4-304
5 X 4	BCR8064/1-304	BCR8064/4-304
6 X 3	BCR9648/1-304	BCR9648/4-304
6 X 4	BCR9664/1-304	BCR9664/4-304
6 X 5	BCR9680/1-304	BCR9680/4-304
8 X 4	BCR12864/1-304	-
8 X 5	BCR12880/1-304	-
8 X 6	BCR12896/1-304	-
10 X 6	BCR16096/1-304	-
10 X 8	BCR160128/1-304	-

SIZE	PART No	
	SCH 10S	SCH 40S
3/4 X 1/2	BRT1208/1-304	BRT1208/4-304
1 X 1/2	BRT1608/1-304	BRT1608/4-304
1 X 3/4	BRT1612/1-304	BRT1612/4-304
1-1/4 X 1	BRT2016/1-304	BRT2016/4-304
1-1/2 X 1/2	BRT2408/1-304	-
1-1/2 X 3/4	BRT2412/1-304	-
1-1/2 X 1	BRT2416/1-304	BRT2416/4-304
1-1/2 X 1-1/4	BRT2420/1-304	BRT2420/4-304
2 X 1/2	BRT3208/1-304	-
2 X 3/4	BRT3212/1-304	-
2 X 1	BRT3216/1-304	BRT3216/4-304
2 X 1-1/4	BRT3220/1-304	BRT3220/4-304
2 X 1-1/2	BRT3224/1-304	BRT3224/4-304
2-1/2 X 1-1/2	BRT4024/1-304	BRT4024/4-304
2-1/2 X 2	BRT4032/1-304	BRT4032/4-304
3 X 1	BRT4816/1-304	-
3 X 1-1/2	BRT4824/1-304	BRT4824/4-304
3 X 2	BRT4832/1-304	BRT4832/4-304
3 X 2-1/2	BRT4840/1-304	BRT4840/4-304
4 X 1-1/2	BRT6424/1-304	-
4 X 2	BRT6432/1-304	BRT6432/4-304
4 X 2-1/2	BRT6440/1-304	BRT6440/4-304
4 X 3	BRT6448/1-304	BRT6448/4-304
5 X 3	BRT8048/1-304	BRT8048/4-304
5 X 4	BRT8064/1-304	BRT8064/4-304
6 X 3	BRT9648/1-304	BRT9648/4-304
6 X 4	BRT9664/1-304	BRT9664/4-304
6 X 5	BRT9680/1-304	BRT9680/4-304
8 X 4	BRT12864/1-304	-
8 X 5	BRT12880/1-304	-
8 X 6	BRT12896/1-304	-
10 X 6	BRT16096/1-304	-
10 X 8	BRT160128/1-304	-

ALL ITEMS ABOVE ARE 304/L STAINLESS STEEL



Product information

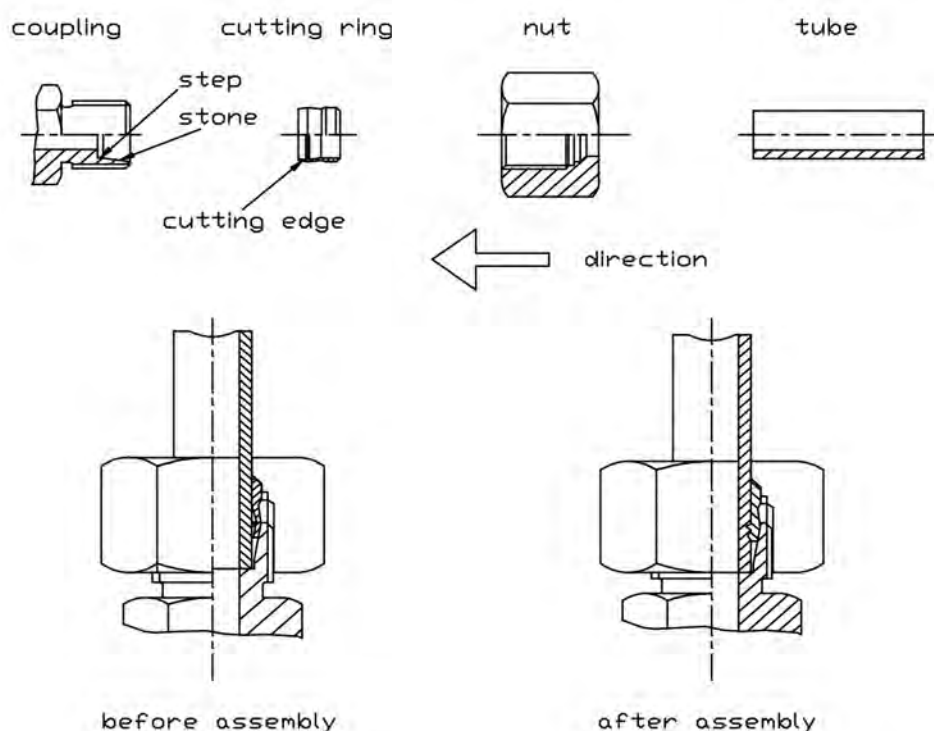
- 316Ti Stainless Steel
- Pressures up to 630 Bar
- Dimensions in mm
- Dimensions to DIN 2353/ISO8434-1
- Sizes 4mm to 42mm

Index

DESCRIPTION	PAGE	DESCRIPTION	PAGE
Pre installation body	4.3	Male run tee BSPP	4.6
Nut	4.3	Male run tee NPT	4.6
Ferrule	4.3	Equal bulkhead	4.6
Equal coupling	4.3	Elbow bulkhead	4.6
Equal elbow	4.3	Female pressure gauge BSPP	4.6
Equal tee	4.3	Female pressure gauge NPT	4.6
Equal cross	4.3	Reducing coupling	4.7
Welding coupling	4.9	Female stud coupling BSPP	4.7
Welding bulkhead	4.3	Female stud coupling NPT	4.7
Weld nipple with O-ring	4.3	Adjustable male standpipe BSPP	4.7
Male stud coupling BSPT	4.4	Adjustable male standpipe NPT	4.7
Male stud coupling BSPP	4.4	Standpipe reducing adaptor (L type)	4.8
Male stud coupling NPT	4.4	Standpipe reducing adaptor (S type)	4.8
Male stud elbow BSPT	4.5	Banjo elbow	4.8
Male stud elbow NPT	4.5	Banjo tee	4.8
Male stud elbow BSPP	4.5	Adjustable standpipe elbow	4.9
Male branch tee BSPT	4.5	Adjustable standpipe branch tee	4.9
Male branch tee NPT	4.5	Adjustable standpipe run tee	4.9
Male branch tee BSPP	4.5	Insert for plastic tube	4.9
Male run tee BSPT	4.6	Plug with O-ring	4.9

Assembly Instructions

- 1) Cut the tube square (do not use a roll cutter) and debur the end of the tube inside and out.
- 2) Fittings should always be lubricated, pre-assembled in a vice and a hardened pre-installation body used when assembling several fittings.
- 3) Lubricate the nut, cutting ring (ferrule) and body cone.
- 4) Place the nut and cutting ring on the tube. The thicker end of the cutting ring must face the nut.
- 5) Put the tube, nut and cutting ring onto the body of the fitting. The tube should butt firmly onto the step in the body.
- 6) Tighten the nut by hand as much as possible, then mark the tube and nut.
- 7) Hold the tube in one hand and with the correct size spanner, tighten the nut until the cutting ring is felt to grip the tube.
- 8) The nut should then be tightened for another 1 to 1-1/2 turns. The tube should not be able to rotate. Large size fittings will need an extension to the spanner.
- 9) Loosen the nut and check assembly. The cutting ring will have cut into the tube and sit flush on the whole circumference. The cutting ring can turn but should not be able to move backwards or forwards.
- 10) Finally, re-assemble the fittings with a spanner and apply about another 1/16 turn after reaching the tight position.



LOOKING FOR TWIN FERRULE?
GO TO PAGE 5.1



PRE INSTALLATION
BODY

NUT

CUTTING RING (Ferrule)

EQUAL COUPLING

EQUAL ELBOW

TUBE	PART No
4	PIB04LL
6	PIB06LL
8	PIB08LL
6	PIB06L
8	PIB08L
10	PIB10L
12	PIB12L
15	PIB15L
18	PIB18L
22	PIB22L
28	PIB28L
35	PIB35L
42	PIB42L
6	PIB06S
8	PIB08S
10	PIB10S
12	PIB12S
14	PIB14S
16	PIB16S
20	PIB20S
25	PIB25S
30	PIB30S
38	PIB38S

TUBE	PART No
4	N04LL
6	N06LL
8	N08LL
6	N06L
8	N08L
10	N10L
12	N12L
15	N15L
18	N18L
22	N22L
28	N28L
35	N35L
42	N42L
6	N06S
8	N08S
10	N10S
12	N12S
14	N14S
16	N16S
20	N20S
25	N25S
30	N30S
38	N38S

TUBE	PART No
4	CR04LL
6	CR06LL
8	CR08LL
6	CR06LS
8	CR08LS
10	CR10LS
12	CR12LS
15	CR15L
18	CR18L
22	CR22L
28	CR28L
35	CR35L
42	CR42L
14	CR14S
16	CR16S
20	CR20S
25	CR25S
30	CR30S
38	CR38S

TUBE	PART No
4	SC04LL
6	SC06LL
8	SC08LL
6	SC06L
8	SC08L
10	SC10L
12	SC12L
15	SC15L
18	SC18L
22	SC22L
28	SC28L
35	SC35L
42	SC42L
6	SC06S
8	SC08S
10	SC10S
12	SC12S
14	SC14S
16	SC16S
20	SC20S
25	SC25S
30	SC30S
38	SC38S

TUBE	PART No
4	EE04LL
6	EE06LL
8	EE08LL
6	EE06L
8	EE08L
10	EE10L
12	EE12L
15	EE15L
18	EE18L
22	EE22L
28	EE28L
35	EE35L
42	EE42L
6	EE06S
8	EE08S
10	EE10S
12	EE12S
14	EE14S
16	EE16S
20	EE20S
25	EE25S
30	EE30S
38	EE38S



EQUAL TEE

EQUAL CROSS

WELDING BULKHEAD

WELD NIPPLE
WITH O-RING

TUBE	PART No
4	ET04LL
6	ET06LL
8	ET08LL
6	ET06L
8	ET08L
10	ET10L
12	ET12L
15	ET15L
18	ET18L
22	ET22L
28	ET28L
35	ET35L
42	ET42L
6	ET06S
8	ET08S
10	ET10S
12	ET12S
14	ET14S
16	ET16S
20	ET20S
25	ET25S
30	ET30S
38	ET38S

TUBE	PART No
4	EC04LL
6	EC06LL
8	EC08LL
6	EC06L
8	EC08L
10	EC10L
12	EC12L
15	EC15L
18	EC18L
22	EC22L
28	EC28L
35	EC35L
42	EC42L
6	EC06S
8	EC08S
10	EC10S
12	EC12S
14	EC14S
16	EC16S
20	EC20S
25	EC25S
30	EC30S
38	EC38S

Assembly Lubricant

Lubricating paste
should be used for
assembly.

You will need less
force to form a seal
when used.

It will prevent locking
and seizure of threads.

Temperature range is -
20c to +110c.

TUBE	PART No	TUBE	PART No
6	WBH06L	6	WN0615
8	WBH08L	8	WN0815
10	WBH10L	10	WN1020
12	WBH12L	12	WN1215
15	WBH15L	12	WN1220
18	WBH18L	14	WN1420
22	WBH22L	15	WN1520
28	WBH28L	16	WN1620
35	WBH35L	16	WN1630
42	WBH42L	18	WN1825
6	WBH06S	20	WN2020
8	WBH08S	20	WN2030
10	WBH10S	22	WN2225
12	WBH12S	25	WN2530
14	WBH14S	25	WN2540
16	WBH16S	28	WN2830
20	WBH20S	30	WN3040
25	WBH25S	30	WN3050
30	WBH30S	35	WN3540
38	WBH38S	38	WN3840
		38	WN3850
		42	WN4230



MALE STUD COUPLING BSPT

TUBE	BSPT	PART No
4	1/8	MSC04LL18BSPT
6	1/8	MSC06LL18BSPT
8	1/8	MSC08LL18BSPT
6	1/8	MSC06L18BSPT
6	1/4	MSC06L14BSPT
6	3/8	MSC06L38BSPT
6	1/2	MSC06L12BSPT
8	1/8	MSC08L18BSPT
8	1/4	MSC08L14BSPT
8	3/8	MSC08L38BSPT
8	1/2	MSC08L12BSPT
10	1/4	MSC10L14BSPT
10	3/8	MSC10L38BSPT
10	1/2	MSC10L12BSPT
12	1/4	MSC12L14BSPT
12	3/8	MSC12L38BSPT
12	1/2	MSC12L12BSPT
15	1/4	MSC15L14BSPT
15	3/8	MSC15L38BSPT
15	1/2	MSC15L12BSPT
18	1/2	MSC18L12BSPT
22	3/4	MSC22L34BSPT
28	1	MSC28L1BSPT
35	1-1/4	MSC35L114BSPT
42	1-1/2	MSC42L112BSPT
14	1/2	MSC14S12BSPT
16	1/2	MSC16S12BSPT

MALE STUD COUPLING BSPP

TUBE	BSPP	PARTNo
6	1/8	MSC06L18BSPP
6	1/4	MSC06L14BSPP
6	3/8	MSC06L38BSPP
6	1/2	MSC06L12BSPP
8	1/8	MSC08L18BSPP
8	1/4	MSC08L14BSPP
8	3/8	MSC08L38BSPP
8	1/2	MSC08L12BSPP
10	1/4	MSC10L14BSPP
10	3/8	MSC10L38BSPP
10	1/2	MSC10L12BSPP
12	1/4	MSC12L14BSPP
12	3/8	MSC12L38BSPP
12	1/2	MSC12L12BSPP
15	3/8	MSC15L38BSPP
15	1/2	MSC15L12BSPP
15	3/4	MSC15L34BSPP
18	3/8	MSC18L38BSPP
18	1/2	MSC18L12BSPP
18	3/4	MSC18L34BSPP
22	1/2	MSC22L12BSPP
22	3/4	MSC22L34BSPP
22	1	MSC22L1BSPP
28	1/2	MSC28L12BSPP
28	3/4	MSC28L34BSPP
28	1	MSC28L1BSPP
35	1-1/4	MSC35L114BSPP
42	1-1/2	MSC42L112BSPP
6	1/4	MSC06S14BSPP
6	3/8	MSC06S38BSPP
6	1/2	MSC06S12BSPP
8	1/4	MSC08S14BSPP
8	3/8	MSC08S38BSPP
8	1/2	MSC08S12BSPP
10	1/4	MSC10S14BSPP
10	3/8	MSC10S38BSPP
10	1/2	MSC10S12BSPP
12	1/4	MSC12S14BSPP
12	3/8	MSC12S38BSPP
12	1/2	MSC12S12BSPP
12	3/4	MSC12S34BSPP
14	3/8	MSC14S38BSPP
14	1/2	MSC14S12BSPP
16	1/2	MSC16S12BSPP
16	3/4	MSC16S34BSPP
20	1/2	MSC20S12BSPP
20	3/4	MSC20S34BSPP
25	3/4	MSC25S34BSPP
25	1	MSC25S1BSPP

MALE STUD COUPLING NPT

TUBE	NPT	PART No
4	1/8	MSC04LL18NPT
6	1/8	MSC06LL18NPT
8	1/8	MSC08LL18NPT
6	1/8	MSC06L18NPT
6	1/4	MSC06L14NPT
6	3/8	MSC06L38NPT
6	1/2	MSC06L12NPT
8	1/8	MSC08L18NPT
8	1/4	MSC08L14NPT
8	3/8	MSC08L38NPT
8	1/2	MSC08L12NPT
10	1/4	MSC10L14NPT
10	3/8	MSC10L38NPT
10	1/2	MSC10L12NPT
12	1/4	MSC12L14NPT
12	3/8	MSC12L38NPT
12	1/2	MSC12L12NPT
12	3/4	MSC12L34NPT
15	1/4	MSC15L14NPT
15	3/8	MSC15L38NPT
15	1/2	MSC15L12NPT
15	3/4	MSC15L34NPT
18	3/8	MSC18L38NPT
18	1/2	MSC18L12NPT
18	3/4	MSC18L34NPT
22	1/2	MSC22L12NPT
22	3/4	MSC22L34NPT
22	1	MSC22L1NPT
28	3/4	MSC28L34NPT
28	1	MSC28L1NPT
35	1	MSC35L1NPT
35	1-1/4	MSC35L114NPT
42	1-1/4	MSC42L114NPT
42	1-1/2	MSC42L112NPT
6	1/8	MSC06S18NPT
6	1/4	MSC06S14NPT
6	3/8	MSC06S38NPT
6	1/2	MSC06S12NPT
8	1/8	MSC08S18NPT
8	1/4	MSC08S14NPT
10	1/4	MSC10S14NPT
10	3/8	MSC10S38NPT
10	1/2	MSC10S12NPT
12	1/4	MSC12S14NPT
12	3/8	MSC12S38NPT
12	1/2	MSC12S12NPT
12	3/4	MSC12S34NPT
14	1/4	MSC14S14NPT
14	3/8	MSC14S38NPT
14	1/2	MSC14S12NPT
16	1/2	MSC16S12NPT
16	3/4	MSC16S34NPT
20	3/4	MSC20S34NPT
25	3/4	MSC25S34NPT
25	1	MSC25S1NPT
30	1-1/4	MSC30S114NPT
38	1-1/2	MSC38S112NPT



MALE STUD ELBOW BSPT

TUBE	BSPT	PART No
4	1/8	MSE04LL18BSPT
6	1/8	MSE06LL18BSPT
8	1/8	MSE08LL18BSPT
6	1/8	MSE06L18BSPT
6	1/4	MSE06L14BSPT
8	1/8	MSE08L18BSPT
8	1/4	MSE08L14BSPT
8	3/8	MSE08L38BSPT
8	1/2	MSE08L12BSPT
10	1/4	MSE10L14BSPT
10	3/8	MSE10L38BSPT
10	1/2	MSE10L12BSPT
12	1/4	MSE12L14BSPT
12	3/8	MSE12L38BSPT
12	1/2	MSE12L12BSPT
15	1/2	MSE15L12BSPT
18	1/2	MSE18L12BSPT
6	1/4	MSE06S14BSPT
8	1/4	MSE08S14BSPT
10	3/8	MSE10S38BSPT
12	3/8	MSE12S38BSPT
14	1/2	MSE14S12BSPT
16	1/2	MSE16S12BSPT

MALE STUD ELBOW NPT

TUBE	NPT	PART No
4	1/8	MSE04LL18NPT
6	1/8	MSE06LL18NPT
8	1/8	MSE08LL18NPT
6	1/8	MSE06L18NPT
6	1/4	MSE06L14NPT
8	1/4	MSE08L14NPT
10	1/4	MSE10L14NPT
12	1/4	MSE12L14NPT
12	3/8	MSE12L38NPT
12	1/2	MSE12L12NPT
15	1/2	MSE15L12NPT
18	1/2	MSE18L12NPT
22	3/4	MSE22L34NPT
28	1	MSE28L1NPT
35	1-1/4	MSE35L114NPT
42	1-1/2	MSE42L112NPT
6	1/4	MSE06S14NPT
8	1/4	MSE08S14NPT
10	3/8	MSE10S38NPT
12	1/4	MSE12S14NPT
12	3/8	MSE12S38NPT
12	1/2	MSE12S12NPT
14	1/2	MSE14S12NPT
16	1/2	MSE16S12NPT
20	3/4	MSE20S34NPT
25	1	MSE25S1NPT
30	1-1/4	MSE30S114NPT
38	1-1/2	MSE38S112NPT

MALE STUD ELBOW BSPP

TUBE	BSPP	PART No
22	3/4	MSE22L34BSPP
28	1	MSE28L1BSPP
35	1-1/4	MSE35L114BSPP
42	1-1/2	MSE42L112BSPP
20	3/4	MSE20S34BSPP
25	1	MSE25S1BSPP
30	1-1/4	MSE30S114BSPP
38	1-1/2	MSE38S112BSPP



MALE BRANCH TEE BSPT

TUBE	BSPT	PART No
4	1/8	MBT04LL18BSPT
6	1/8	MBT06LL18BSPT
8	1/8	MBT08LL18BSPT
6	1/8	MBT06L18BSPT
8	1/4	MBT08L14BSPT
10	1/4	MBT10L14BSPT
12	3/8	MBT12L38BSPT
15	1/2	MBT15L12BSPT
18	1/2	MBT18L12BSPT
6	1/4	MBT06S14BSPT
8	1/4	MBT08S14BSPT
10	3/8	MBT10S38BSPT
12	3/8	MBT12S38BSPT
14	1/2	MBT14S12BSPT
16	1/2	MBT16S12BSPT

MALE BRANCH TEE NPT

TUBE	NPT	PART No
4	1/8	MBT04LL18NPT
6	1/8	MBT06LL18NPT
8	1/8	MBT08LL18NPT
6	1/8	MBT06L18NPT
8	1/4	MBT08L14NPT
10	1/4	MBT10L14NPT
12	3/8	MBT12L38NPT
15	1/2	MBT15L12NPT
18	1/2	MBT18L12NPT
6	1/4	MBT06S14NPT
8	1/4	MBT08S14NPT
10	3/8	MBT10S38NPT
12	3/8	MBT12S38NPT
14	1/2	MBT14S12NPT
16	1/2	MBT16S12NPT

MALE BRANCH TEE BSPP

TUBE	BSPP	PART No
22	3/4	MBT22L34BSPP
28	1	MBT28L1BSPP
35	1-1/4	MBT35L114BSPP
42	1-1/2	MBT42L112BSPP
20	3/4	MBT20S34BSPP
25	1	MBT25S1BSPP
30	1-1/4	MBT30S114BSPP
38	1-1/2	MBT38S112BSPP



MALE RUN TEE BSPT

TUBE	BSPT	PART No
4	1/8	MRT04LL18BSPT
6	1/8	MRT06LL18BSPT
8	1/8	MRT08LL18BSPT
6	1/8	MRT06L18BSPT
8	1/4	MRT08L14BSPT
10	1/4	MRT10L14BSPT
12	3/8	MRT12L38BSPT
15	1/2	MRT15L12BSPT
18	1/2	MRT18L12BSPT
6	1/4	MRT06S14BSPT
8	1/4	MRT08S14BSPT
10	3/8	MRT10S38BSPT
12	3/8	MRT12S38BSPT
14	1/2	MRT14S12BSPT
16	1/2	MRT16S12BSPT

MALE RUN TEE BSPP

TUBE	BSPP	PART No
22	3/4	MRT22L34BSPP
28	1	MRT28L1BSPP
35	1-1/4	MRT35L114BSPP
42	1-1/2	MRT42L112BSPP
20	3/4	MRT20S34BSPP
25	1	MRT25S1BSPP
30	1-1/4	MRT30S114BSPP
38	1-1/2	MRT38S112BSPP

MALE RUN TEE NPT

TUBE	NPT	PART No
4	1/8	MRT04LL18NPT
6	1/8	MRT06LL18NPT
8	1/8	MRT08LL18NPT
6	1/8	MRT06L18NPT
8	1/4	MRT08L14NPT
10	1/4	MRT10L14NPT
12	3/8	MRT12L38NPT
15	1/2	MRT15L12NPT
18	1/2	MRT18L12NPT
6	1/4	MRT06S14NPT
8	1/4	MRT08S14NPT
10	3/8	MRT10S38NPT
12	3/8	MRT12S38NPT
14	1/2	MRT14S12NPT
16	1/2	MRT16S12NPT



EQUAL BULKHEAD

TUBE	PART No
6	BH06L
8	BH08L
10	BH10L
12	BH12L
15	BH15L
18	BH18L
22	BH22L
28	BH28L
35	BH35L
42	BH42L
6	BH06S
8	BH08S
10	BH10S
12	BH12S
14	BH14S
16	BH16S
20	BH20S
25	BH25S
30	BH30S
38	BH38S

ELBOW BULKHEAD

TUBE	PART No
6	BHE06L
8	BHE08L
10	BHE10L
12	BHE12L
15	BHE15L
18	BHE18L
22	BHE22L
28	BHE28L
35	BHE35L
42	BHE42L
6	BHE06S
8	BHE08S
10	BHE10S
12	BHE12S
14	BHE14S
16	BHE16S
20	BHE20S
25	BHE25S
30	BHE30S
38	BHE38S

FEMALE PRESSURE GAUGE
COUPLING BSPP

TUBE	BSPP	PART No
6	1/4	PGC06L14BSPP
8	1/4	PGC08L14BSPP
10	1/4	PGC10L14BSPP
12	1/4	PGC12L14BSPP
6	1/2	PGC06S12BSPP
8	1/2	PGC08S12BSPP
10	1/2	PGC10S12BSPP
12	1/2	PGC12S12BSPP

NPT

TUBE	NPT	PART No
6	1/4	PGC06L14NPT
8	1/4	PGC08L14NPT
10	1/4	PGC10L14NPT
12	1/4	PGC12L14NPT
6	1/2	PGC06S12NPT
8	1/2	PGC08S12NPT
10	1/2	PGC10S12NPT
12	1/2	PGC12S12NPT



REDUCING COUPLING

FEMALE STUD COUPLING BSPP

FEMALE STUD COUPLING NPT

TUBE D1	TUBE D2	PART No
8	6	RC0806L
10	6	RC1006L
10	8	RC1008L
12	6	RC1206L
12	8	RC1208L
12	10	RC1210L
15	6	RC1506L
15	8	RC1508L
15	10	RC1510L
15	12	RC1512L
18	8	RC1808L
18	10	RC1810L
18	12	RC1812L
18	15	RC1815L
22	12	RC2212L
22	15	RC2215L
22	18	RC2218L
28	10	RC2810L
28	12	RC2812L
28	15	RC2815L
28	18	RC2818L
28	22	RC2822L
35	28	RC3528L
42	28	RC4228L
42	35	RC4235L
8	6	RC0806S
10	6	RC1006S
10	8	RC1008S
12	6	RC1206S
12	8	RC1208S
12	10	RC1210S
14	10	RC1410S
14	12	RC1412S
16	10	RC1610S
16	12	RC1612S
16	14	RC1614S
20	10	RC2010S
20	12	RC2012S
20	14	RC2014S
20	16	RC2016S
25	16	RC2516S
25	20	RC2520S
30	20	RC3020S
30	25	RC3025S
38	30	RC3830S

TUBE	BSPP	PART No
6	1/8	FSC06L18BSPP
6	1/4	FSC06L14BSPP
8	1/4	FSC08L14BSPP
10	1/4	FSC10L14BSPP
12	3/8	FSC12L38BSPP
12	1/2	FSC12L12BSPP
15	3/8	FSC15L38BSPP
15	1/2	FSC15L12BSPP
18	1/2	FSC18L12BSPP
22	3/4	FSC22L34BSPP
28	1	FSC28L1BSPP
35	1-1/4	FSC35L114BSPP
42	1-1/2	FSC42L112BSPP
6	1/4	FSC06S14BSPP
8	1/4	FSC08S14BSPP
10	3/8	FSC10S38BSPP
12	3/8	FSC12S38BSPP
14	1/2	FSC14S12BSPP
16	1/2	FSC16S12BSPP
20	3/4	FSC20S34BSPP
25	1	FSC25S1BSPP
30	1-1/4	FSC30S114BSPP
38	1-1/2	FSC38S112BSPP

TUBE	NPT	PART No
6	1/8	FSC06L18NPT
6	1/4	FSC06L14NPT
8	1/4	FSC08L14NPT
10	1/4	FSC10L14NPT
12	3/8	FSC12L38NPT
12	1/2	FSC12L12NPT
15	3/8	FSC15L38NPT
15	1/2	FSC15L12NPT
18	1/2	FSC18L12NPT
22	3/4	FSC22L34NPT
28	1	FSC28L1NPT
35	1-1/4	FSC35L114NPT
42	1-1/2	FSC42L112NPT
6	1/4	FSC06S14NPT
8	1/4	FSC08S14NPT
10	3/8	FSC10S38NPT
12	3/8	FSC12S38NPT
14	1/2	FSC14S12NPT
16	1/2	FSC16S12NPT
20	3/4	FSC20S34NPT
25	1	FSC25S1NPT
30	1-1/4	FSC30S114NPT
38	1-1/2	FSC38S112NPT



ADJUSTABLE MALE STANDPIPE BSPP ADJUSTABLE MALE STANDPIPE NPT

TUBE	BSPP	PART No
6	1/8	AMS06L18BSPP
8	1/4	AMS08L14BSPP
10	1/4	AMS10L14BSPP
12	3/8	AMS12L38BSPP
15	1/2	AMS15L12BSPP
18	1/2	AMS18L12BSPP
22	3/4	AMS22L34BSPP
28	1	AMS28L1BSPP
35	1-1/4	AMS25L114BSPP
42	1-1/2	AMS42L112BSPP
6	1/4	AMS06S14BSPP
8	1/4	AMS08S14BSPP
10	3/8	AMS10S38BSPP
12	3/8	AMS12S38BSPP
12	1/2	AMS12S12BSPP
14	1/2	AMS14S12BSPP
16	1/2	AMS16S12BSPP
16	3/4	AMS16S34BSPP
20	3/4	AMS20S34BSPP
25	1	AMS25S1BSPP
30	1-1/4	AMS30S114BSPP
38	1-1/2	AMS38S114BSPP

TUBE	NPT	PART No
6	1/8	AMS06L18NPT
8	1/4	AMS08L14NPT
10	1/4	AMS10L14NPT
12	3/8	AMS12L38NPT
15	1/2	AMS15L12NPT
18	1/2	AMS18L12NPT
22	3/4	AMS22L34NPT
28	1	AMS28L1NPT
35	1-1/4	AMS35L114NPT
42	1-1/2	AMS42L112NPT
6	1/4	AMS06S14NPT
8	1/4	AMS08S14NPT
10	3/8	AMS10S38NPT
12	3/8	AMS12S38NPT
14	1/2	AMS14S12NPT
16	1/2	AMS16S12NPT
20	3/4	AMS20S34NPT
25	1	AMS25S1NPT
30	1-1/4	AMS30S114NPT
38	1-1/2	AMS38S112NPT



STANDPIPE REDUCING ADAPTOR
(Light Series)

TUBE 1	TUBE 2	PART No
8	6	SRA0806L
10	6	SRA1006L
10	8	SRA1008L
12	6	SRA1206L
12	8	SRA1208L
12	10	SRA1210L
15	6	SRA1506L
15	8	SRA1508L
15	10	SRA1510L
15	12	SRA1512L
18	6	SRA1806L
18	8	SRA1808L
18	10	SRA1810L
18	12	SRA1812L
18	15	SRA1815L
22	6	SRA2206L
22	8	SRA2208L
22	10	SRA2210L
22	12	SRA2212L
22	15	SRA2215L
22	18	SRA2218L
28	6	SRA2806L
28	8	SRA2808L
28	10	SRA2810L
28	12	SRA2812L
28	15	SRA2815L
28	18	SRA2818L
28	22	SRA2822L
35	6	SRA3506L
35	8	SRA3508L
35	10	SRA3510L
35	12	SRA3512L
35	15	SRA3515L
35	18	SRA3518L
35	22	SRA3522L
35	28	SRA3528L
42	10	SRA4210L
42	12	SRA4212L
42	15	SRA4215L
42	18	SRA4218L
42	22	SRA4222L
42	28	SRA4228L
42	35	SRA4235L

STANDPIPE REDUCING ADAPTOR
(Heavy Series)

TUBE 1	TUBE 2	PART No
8	6	SRA0806S
10	6	SRA1006S
10	8	SRA1008S
12	6	SRA1206S
12	8	SRA1208S
12	10	SRA1210S
14	6	SRA1406S
14	8	SRA1408S
14	10	SRA1410S
14	12	SRA1412S
16	6	SRA1606S
16	8	SRA1608S
16	10	SRA1610S
16	12	SRA1612S
16	14	SRA1614S
20	6	SRA2006S
20	8	SRA2008S
20	10	SRA2010S
20	12	SRA2012S
20	14	SRA2014S
20	16	SRA2016S
25	6	SRA2506S
25	8	SRA2508S
25	10	SRA2510S
25	12	SRA2512S
25	14	SRA2514S
25	16	SRA2516S
25	20	SRA2520S
30	6	SRA3006S
30	8	SRA3008S
30	10	SRA3010S
30	12	SRA3012S
30	14	SRA3014S
30	16	SRA3016S
30	20	SRA3020S
30	25	SRA3025S
38	6	SRA3806S
38	8	SRA3808S
38	10	SRA3810S
38	12	SRA3812S
38	14	SRA3814S
38	16	SRA3816S
38	20	SRA3820S
38	25	SRA3825S
38	30	SRA3830S

BANJO ELBOW BSPP

TUBE	H BSPP	PART No
6	1/8	BE06L18BSPP
8	1/4	BE08L14BSPP
10	1/4	BE10L14BSPP
12	3/8	BE12L38BSPP
15	1/2	BE15L12BSPP
18	1/2	BE18L12BSPP
22	3/4	BE22L34BSPP
28	1	BE28L1BSPP
35	1-1/4	BE35L114BSPP
42	1-1/2	BE42L112BSPP
6	1/4	BE06S14BSPP
8	1/4	BE08S14BSPP
10	3/8	BE10S38BSPP
12	3/8	BE12S38BSPP
14	1/2	BE14S12BSPP
16	1/2	BE16S12BSPP
20	3/4	BE20S34BSPP
25	1	BE25S1BSPP
30	1-1/4	BE30S114BSPP
38	1-1/2	BE38S112BSPP



BANJO TEE BSPP

TUBE	BSPP	PART No
6	1/8	BT06L18BSPP
8	1/4	BT08L14BSPP
10	1/4	BT10L14BSPP
12	3/8	BT12L38BSPP
15	1/2	BT15L12BSPP
18	1/2	BT18L12BSPP
22	3/4	BT22L34BSPP
28	1	BT28L1BSPP
35	1-1/4	BT35L114BSPP
42	1-1/2	BT42L112BSPP
6	1/4	BT06S14BSPP
8	1/4	BT08S14BSPP
10	3/8	BT10S38BSPP
12	3/8	BT12S38BSPP
14	1/2	BT14S12BSPP
16	1/2	BT16S12BSPP
20	3/4	BT20S34BSPP
25	1	BT25S1BSPP
30	1-1/4	BT30S114BSPP
38	1-1/2	BT38S112BSPP



ADJUSTABLE STANDPIPE ELBOW ADJUSTABLE STANDPIPE BRANCH TEE ADJUSTABLE STANDPIPE RUN TEE

TUBE	PART No
6	ASE06L
8	ASE08L
10	ASE10L
12	ASE12L
15	ASE15L
18	ASE18L
22	ASE22L
28	ASE28L
35	ASE35L
42	ASE42L
6	ASE06S
8	ASE08S
10	ASE10S
12	ASE12S
14	ASE14S
16	ASE16S
20	ASE20S
25	ASE25S
30	ASE30S
38	ASE38S

TUBE	PART No
6	ASBT06L
8	ASBT08L
10	ASBT10L
12	ASBT12L
15	ASBT15L
18	ASBT18L
22	ASBT22L
28	ASBT28L
35	ASBT35L
42	ASBT42L
6	ASBT06S
8	ASBT08S
10	ASBT10S
12	ASBT12S
14	ASBT14S
16	ASBT16S
20	ASBT20S
25	ASBT25S
30	ASBT30S
38	ASBT38S

TUBE	PART No
6	ASRT06L
8	ASRT08L
10	ASRT10L
12	ASRT12L
15	ASRT15L
18	ASRT18L
22	ASRT22L
28	ASRT28L
35	ASRT35L
42	ASRT42L
6	ASRT06S
8	ASRT08S
10	ASRT10S
12	ASRT12S
14	ASRT14S
16	ASRT16S
20	ASRT20S
25	ASRT25S
30	ASRT30S
38	ASRT38S



THIN WALL/NYLON TUBE INSERT

TUBE OD	TUBE ID	PART No
4	2.0	NTI0402
4	2.5	NTI0425
6	3.0	NTI0603
6	4.0	NTI0604
8	5.5	NTI0855
8	6.0	NTI0806
10	7.0	NTI1007
10	8.0	NTI1008
12	9.5	NTI1295
12	10.0	NTI1210
14	11.0	NTI1411
15	12.0	NTI1512
16	13.0	NTI1613
18	16.0	NTI1816
20	16.0	NTI2016
22	18.0	NTI2218

PLUG WITH O-RING

TUBE	PART No
6	P06L/S
8	P08L/S
10	P10L/S
12	P12L/S
15	P15L
18	P18L
22	P22L
28	P28L
35	P35L
42	P42L
16	P16S
16	P16S
20	P20S
25	P25S
30	P30S
38	P38S

WELDING COUPLING

TUBE	PART No
6	WC06L
8	WC08L
10	WC10L
12	WC12L
15	WC15L
18	WC18L
22	WC22L
28	WC28L
35	WC35L
42	WC42L
6	WC06S
8	WC08S
10	WC10S
12	WC12S
14	WC14S
16	WC16S
20	WC20S
25	WC25S
30	WC30S
38	WC38S

Pressure ranges for cutting ring

SERIES	TUBE	PRESSURE
LL	14-12mm	100 (BAR)
L	6-10mm	500 (BAR)
	12-18mm	400 (BAR)
	22-42mm	250 (BAR)
S	6-10mm	800 (BAR)
	12-16mm	630 (BAR)
	20-38mm	420 (BAR)

Pressure ranges for swivel adjustable fittings

SERIES	TUBE	PRESSURE
L	6-18mm	315 (BAR)
	22-42mm	160 (BAR)
6	6-14mm	630 (BAR)
	16-30mm	400 (BAR)
	38mm	315 (BAR)

Reduction in pressure

TEMPERATURE	REDUCTION IN PRESSURE
-60°C to +20°C	-
+50°C	4.5%
+100°C	11%
+200°C	20%
+300°C	29%
+400°C	33%



The pressure ratings stated are for static applications. This is where a system is pressurised and remains stable with no fluctuations in pressure, pulsation, vibration, temperature etc.

The fittings are designed with a safety factor of 4.

For dynamic applications with pressure fluctuations, vibration etc. reduce the above by approximately one third.



Product information

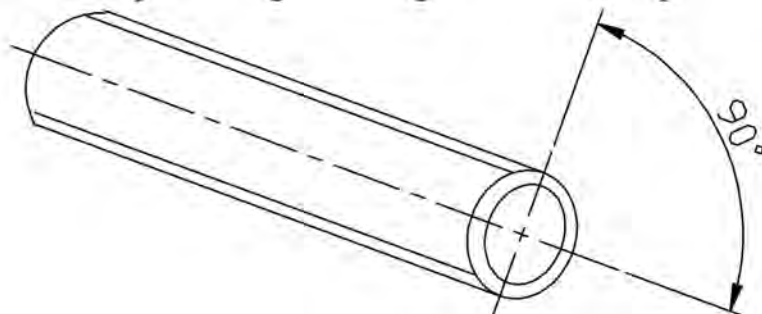
- 316 Stainless steel
- Metric sizes 4mm to 25mm
- Silver plated nuts
- Fractional sizes 1/8" to 1"

Index

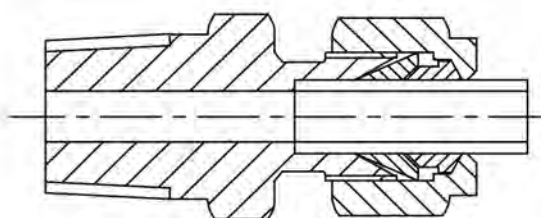
DESCRIPTION	PAGE	DESCRIPTION	PAGE
Male connector BSPT/NPT	5.3	Reducing adaptor	5.6
Male connector BSPP	5.3	Male standpipe adaptor BSPT/NPT/BSPP	5.6
Female connector BSPP/BSPT/NPT	5.3	Female standpipe adaptor BSPT/NPT/BSPP	5.6
Equal union	5.4	Male bulkhead	5.6
Reducing union	5.4	Female bulkhead	5.7
Bulkhead union	5.4	Female stud elbow	5.7
Equal elbow	5.4	Male stud elbow	5.7
Equal tee	5.5	Male run tee	5.7
Blanking cap	5.5	Equal cross	5.7
Blanking plug	5.5	Male branch tee	5.8
Compression nut	5.5	Female branch tee	5.8
Front ferrule	5.5	Female run tee	5.8
Back ferrule	5.5		

ASSEMBLY INSTRUCTIONS

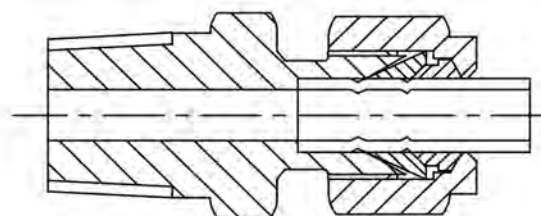
1. Cut the tube to the required length making sure ends are square and all burrs removed.



2. Insert the tube into the fitting and ensure that it is pushed firmly onto the stop inside.



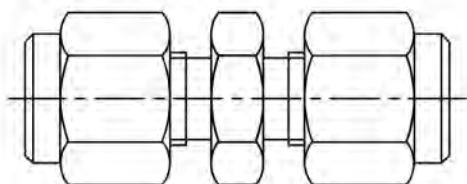
3. Make sure the nut is finger tight and then turn the nut another 1-1/4 turns.



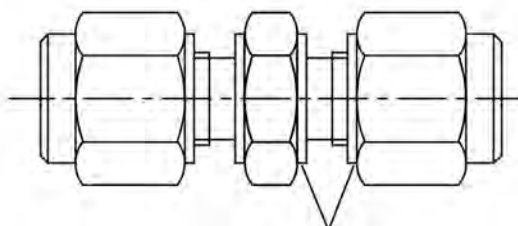
4. Fittings can be assembled and disassembled many times. On reassembly tighten the nut until finger tight, then tighten with a wrench until a rise in torque is felt. Finally tighten another 1/4 turn

IDENTIFICATION OF FRACTIONAL AND METRIC FITTINGS

FRACTIONAL



METRIC



MACHINED COLLAR ON NUT AND BODY



MALE CONNECTOR NPT/BSPT

Fractional

TUBE	THREAD	PART No **
1/8	1/8	2MC2**
1/8	1/4	2MC4**
3/16	1/8	3MC2**
3/16	1/4	3MC4**
1/4	1/8	4MC2**
1/4	1/4	4MC4**
1/4	3/8	4MC6**
1/4	1/2	4MC8**
5/16	1/4	5MC4**
3/8	1/4	6MC4**
3/8	3/8	6MC6**
3/8	1/2	6MC8**
1/2	1/4	8MC4**
1/2	3/8	8MC6**
1/2	1/2	8MC8**
1/2	3/4	8MC12**
5/8	1/2	10MC8**
5/8	3/4	10MC12**
3/4	1/2	12MC8**
3/4	3/4	12MC12**
1	3/4	16MC12**
1	1	16MC16**

Metric

TUBE	THREAD	PART No **
4	1/8	4mMC2**
4	1/4	4mMC4**
6	1/8	6mMC2**
6	1/4	6mMC4**
6	3/8	6mMC6**
6	1/2	6mMC8**
8	1/4	8mMC4**
8	3/8	8mMC6**
10	1/4	10mMC4**
10	3/8	10mMC6**
10	1/2	10mMC8**
12	1/4	12mMC4**
12	3/8	12mMC6**
12	1/2	12mMC8**
12	3/4	12mMC12**
15	1/4	15mMC4**
15	3/8	15mMC6**
15	1/2	15mMC8**
15	3/4	15mMC12**
16	1/2	16mMC8**
16	3/4	16mMC12**
20	1/2	20mMC8**
20	3/4	20mMC12**
22	1/2	22mMC8**
22	3/4	22mMC12**
25	3/4	25mMC12**
25	1	25mMC16**

MALE CONNECTOR BSPP

Fractional

TUBE	THREAD	PART No
1/8	1/8	2MC2BSPP
1/8	1/4	2MC4BSPP
3/16	1/8	3MC2BSPP
3/16	1/4	3MC4BSPP
1/4	1/8	4MC2BSPP
1/4	1/4	4MC4BSPP
1/4	3/8	4MC6BSPP
1/4	1/2	4MC8BSPP
5/16	1/4	5MC4BSPP
3/8	1/4	6MC4BSPP
3/8	3/8	6MC6BSPP
3/8	1/2	6MC8BSPP
1/2	1/4	8MC4BSPP
1/2	3/8	8MC6BSPP
1/2	1/2	8MC8BSPP
1/2	3/4	8MC12BSPP
5/8	1/2	10MC8BSPP
5/8	3/4	10MC12BSPP
3/4	1/2	12MC8BSPP
3/4	3/4	12MC12BSPP
1	3/4	16MC12BSPP
1	1	16MC16BSPP

Metric

TUBE	THREAD	PART No
4	1/8	4mMC2BSPP
4	1/4	4mMC4BSPP
6	1/8	6mMC2BSPP
6	1/4	6mMC4BSPP
6	3/8	6mMC6BSPP
6	1/2	6mMC8BSPP
8	1/4	8mMC4BSPP
8	3/8	8mMC6BSPP
10	1/4	10mMC4BSPP
10	3/8	10mMC6BSPP
10	1/2	10mMC8BSPP
12	1/4	12mMC4BSPP
12	3/8	12mMC6BSPP
12	1/2	12mMC8BSPP
12	3/4	12mMC12BSPP
15	1/4	15mMC4BSPP
15	3/8	15mMC6BSPP
15	1/2	15mMC8BSPP
15	3/4	15mMC12BSPP
16	1/2	16mMC8BSPP
16	3/4	16mMC12BSPP
20	1/2	20mMC8BSPP
20	3/4	20mMC12BSPP
22	1/2	22mMC8BSPP
22	3/4	22mMC12BSPP
25	3/4	25mMC12BSPP
25	1	25mMC16BSPP

FEMALE CONNECTOR BSPP/NPT

Fractional

TUBE	THREAD	PART No **
1/8	1/8	2FC2**
1/8	1/4	2FC4**
3/16	1/8	3FC2**
3/16	1/4	3FC4**
1/4	1/8	4FC2**
1/4	1/4	4FC4**
1/4	3/8	4FC6**
1/4	1/2	4FC8**
5/16	1/4	5FC4**
3/8	1/4	6FC4**
3/8	3/8	6FC6**
3/8	1/2	6FC8**
1/2	1/4	8FC4**
1/2	3/8	8FC6**
1/2	1/2	8FC8**
1/2	3/4	8FC12**
5/8	1/2	10FC8**
5/8	3/4	10FC12**
3/4	1/2	12FC8**
3/4	3/4	12FC12**
1	3/4	16FC12**
1	1	16FC16**

Metric

TUBE	THREAD	PART No **
4	1/8	4mFC2**
4	1/4	4mFC4**
6	1/8	6mFC2**
6	1/4	6mFC4**
6	3/8	6mFC6**
6	1/2	6mFC8**
8	1/4	8mFC4**
8	3/8	8mFC6**
10	1/4	10mFC4**
10	3/8	10mFC6**
10	1/2	10mFC8**
12	1/4	12mFC4**
12	3/8	12mFC6**
12	1/2	12mFC8**
12	3/4	12mFC12**
15	1/2	15mFC8**
16	1/2	16mFC8**
16	3/4	16mFC12**
20	1/2	20mFC8**
20	3/4	20mFC12**
22	3/4	22mFC12**
25	3/4	25mFC12**
25	1	25mFC16**



EQUAL UNION

Fractional

TUBE	PART No
1/8	2U
3/16	3U
1/4	4U
5/16	5U
3/8	6U
1/2	8U
5/8	10U
3/4	12U
1	16U

Metric

TUBE	PART No
4	4mU
6	6mU
8	8mU
10	10mU
12	12mU
15	15mU
16	16mU
20	20mU
22	22mU
25	25mU

REDUCING UNION

Fractional

TUBE	TUBE	PART No
1/4	1/8	4RU2
3/8	1/4	6RU4
1/2	1/4	8RU4
1/2	5/16	8RU5
1/2	3/8	8RU6
3/4	1/2	12RU8
1	1/2	16RU8
1	5/8	16RU10
1	3/4	16RU12

Metric

TUBE	TUBE	PART No
6	4	6mRU4
8	6	8mRU6
10	6	10mRU6
12	6	12mRU6
12	10	12mRU10
15	12	15mRU12
16	12	16mRU12
20	12	20mRU12
22	15	22mRU15
25	12	25mRU12
25	16	25mRU16
25	20	25mRU20

BULKHEAD UNION

Fractional

TUBE	PART No
1/8	2BHU
3/16	3BHU
1/4	4BHU
5/16	5BHU
3/8	6BHU
1/2	8BHU
5/8	10BHU
3/4	12BHU
1	16BHU

Metric

TUBE	PART No
4	4mBHU
6	6mBHU
8	8mBHU
10	10mBHU
12	12mBHU
15	15mBHU
16	16mBHU
20	20mBHU
25	25mBHU



EQUAL ELBOW

Fractional

TUBE	PART No
1/8	2ELU
3/16	3ELU
1/4	4ELU
5/16	5ELU
3/8	6ELU
1/2	8ELU
5/8	10ELU
3/4	12ELU
1	16ELU

Metric

TUBE	PART No
4	4mELU
6	6mELU
8	8mELU
10	10mELU
12	12mELU
15	15mELU
16	16mELU
20	20mELU
22	22mELU
25	25mELU



EQUAL TEE

Fractional

TUBE	PART No
1/8	2TTT
3/16	3TTT
1/4	4TTT
5/16	5TTT
3/8	6TTT
1/2	8TTT
5/8	10TTT
3/4	12TTT
1	16TTT

Metric

TUBE	PART No
4	4mTTT
6	6mTTT
8	8mTTT
10	10mTTT
12	12mTTT
15	15mTTT
16	16mTTT
20	20mTTT
22	22mTTT
25	25mTTT



BLANKING CAP

Fractional

TUBE	PART No
1/8	2CAP
3/16	3CAP
1/4	4CAP
5/16	5CAP
3/8	6CAP
1/2	8CAP
5/8	10CAP
3/4	12CAP
1	16CAP

Metric

TUBE	PART No
4	4mCAP
6	6mCAP
8	8mCAP
10	10mCAP
12	12mCAP
16	16mCAP
20	20mCAP
25	25mCAP



BLANKING PLUG

Fractional

TUBE	PART No
1/8	2FPLUG
3/16	3FPLUG
1/4	4FPLUG
5/16	5FPLUG
3/8	6FPLUG
1/2	8FPLUG
5/8	10FPLUG
3/4	12FPLUG
1	16FPLUG

Metric

TUBE	PART No
4	4mFPLUG
6	6mFPLUG
8	8mFPLUG
10	10mFPLUG
12	12mFPLUG
16	16mFPLUG
20	20mFPLUG
25	25mFPLUG



COMPRESSION NUT

Fractional

TUBE	PART No
1/8	2N
3/16	3N
1/4	4N
5/16	5N
3/8	6N
1/2	8N
5/8	10N
3/4	12N
1	16N

Metric

C TUBE	PART No
4	4mN
6	6mN
8	8mN
10	10mN
12	12mN
15	15mN
16	16mN
22	22mN
20	20mN
25	25mN



FRONT FERRULE

Fractional

TUBE	PART No
1/8	2FC
3/16	3FC
1/4	4FC
5/16	5FC
3/8	6FC
1/2	8FC
5/8	10FC
3/4	12FC
1	16FC

Metric

TUBE	PART No
4	4mFC
6	6mFC
8	8mFC
10	10mFC
12	12mFC
15	15mFC
16	16mFC
20	20mFC
22	22mFC
25	25mFC



BACK FERRULE

Fractional

TUBE	PART No
1/8	2RC
3/16	3RC
1/4	4RC
5/16	5RC
3/8	6RC
1/2	8RC
5/8	10RC
3/4	12RC
1	16RC

Metric

TUBE	PART No
4	4mRC
6	6mRC
8	8mRC
10	10mRC
12	12mRC
15	15mRC
16	16mRC
20	20mRC
22	22mRC
25	25mRC



REDUCING ADAPTOR

**MALE STANDPIPE ADAPTOR
NPT/BSPT/BSPP**

**FEMALE STANDPIPE ADAPTOR
NPT/BSPP**

Fractional		
TUBE	STANDPIPE	PART No
1/8	1/4	2RED4
1/4	3/8	4RED6
1/4	1/2	4RED8
5/16	1/2	5RED8
3/8	1/2	6RED8
1/2	3/4	8RED12
1/2	1	8RED16
5/8	1	10RED16
3/4	1	12RED16

Fractional		
TUBE	THREAD	PART No **
1/8	1/8	2ATPM2**
3/16	1/8	3ATPM2**
1/4	1/8	4ATPM2**
1/4	1/4	4ATPM4**
1/4	1/2	4ATPM8**
3/8	3/8	6ATPM6**
3/8	1/2	6ATPM8**
1/2	1/4	8ATPM4**
1/2	1/2	8ATPM8**
1/2	3/4	8ATPM12**
3/4	1/2	12ATPM8**
3/4	3/4	12ATPM12**
3/4	1	12ATPM16**
1	3/4	16ATPM12**

Fractional		
TUBE	THREAD	PART No **
1/8	1/4	2ATPF4**
1/4	1/4	4ATPF4**
1/4	3/8	4ATPF6**
1/4	1/2	4ATPF8**
3/8	1/4	6ATPF4**
3/8	3/8	6ATPF6**
3/8	1/2	6ATPF8**
1/2	1/4	8ATPF4**
1/2	3/8	8ATPF6**
1/2	1/2	8ATPF8**
3/4	3/8	12ATPF6**
3/4	1/2	12ATPF8**
1	3/4	16ATPF12**

Metric		
TUBE	STANDPIPE	PART No
4	6	4mRED6
6	8	6mRED8
6	10	6mRED10
6	12	6mRED12
8	10	8mRED10
8	12	8mRED12
10	12	10mRED12
12	16	12mRED16
16	25	16mRED25
20	25	20mRED25

Metric		
TUBE	THREAD	PART No **
4	1/8	4mATPM2**
6	1/8	6mATPM2**
6	1/4	6mATPM4**
6	1/2	6mATPM8**
10	1/4	10mATPM4**
10	3/8	10mATPM6**
10	1/2	10mATPM8**
12	1/4	12mATPM4**
12	3/8	12mATPM6**
12	1/2	12mATPM8**
12	3/4	12mATPM12*
15	1/2	15mATPM8**
16	1/2	16mATPM8**
16	3/4	16mATPM12*
20	3/4	20mATPM12*
20	1	20mATPM16*
25	3/4	25mATPM12*

Metric		
TUBE	THREAD	PART No **
4	1/4	4mATPF4**
6	1/4	6mATPF4**
6	3/8	6mATPF6**
6	1/2	6mATPF8**
8	1/4	8mATPF4**
8	3/8	8mATPF6**
10	1/4	10mATPF4**
10	3/8	10mATPF6**
10	1/2	10mATPF8**
12	1/4	12mATPF4**
12	3/8	12mATPF6**
12	1/2	12mATPF8**
16	1/4	16mATPF4**
16	1/2	16mATPF8**
20	3/4	20mATPF12*
20	1	20mATPF16*
25	3/4	25mATPF12*



**MALE BULKHEAD
BSPT/NPT**

Fractional			Metric		
TUBE	THREAD	PART No **	TUBE	THREAD	PART No **
1/4	1/8	4MBH2**	6	1/8	6mMBH2**
1/4	1/4	4MBH4**	6	1/4	6mMBH4**
3/8	1/4	6MBH4**	10	1/4	10mMBH4**
1/2	1/4	8MBH4**	12	1/4	12mMBH4**
1/2	1/2	8MBH8**	12	1/2	12mMBH8**



FEMALE BULKHEAD
BSPP/NPT



FEMALE STUD ELBOW
BSPP/NPT



MALE STUD ELBOW
BSPT/NPT

Fractional

TUBE	THREAD	PART No **
1/4	1/8	4FBH2**
1/4	1/4	4FBH4**
3/8	1/4	6FBH4**
1/2	1/4	8FBH4**
1/2	1/2	8FBH8**

Metric

TUBE	THREAD	PART No **
6	1/8	6mFBH2**
6	1/4	6mFBH4**
10	1/4	10mFBH4**
12	1/4	12mFBH4**
12	1/2	12mFBH8**

Fractional

TUBE	THREAD	PART No**
1/4	1/8	4FE2**
1/4	1/4	4FE4**
3/8	1/4	6FE4**
1/2	1/4	8FE4**
1/2	1/2	8FE8**
3/4	3/4	12FE12**

Metric

TUBE	THREAD	PART No**
6	1/8	6mFE2**
6	1/4	6mFE4**
10	1/4	10mFE4**
12	1/4	12mFE4**
12	1/2	12mFE8**
20	3/4	20mFE12**

Fractional

TUBE	THREAD	PART No**
1/8	1/8	2ME2**
3/16	1/8	3ME2**
1/4	1/8	4ME2**
1/4	1/4	4ME4**
1/4	3/8	4ME6**
1/4	1/2	4ME8**
3/8	1/4	6ME4**
3/8	3/8	6ME6**
3/8	1/2	6ME8**
1/2	1/4	8ME4**
1/2	3/8	8ME6**
1/2	1/2	8ME8**
5/8	1/2	10ME8**
3/4	1/2	12ME8**
3/4	3/4	12ME12**
1	3/4	16ME12**
1	1	16ME16**

Metric

TUBE	THREAD	PART No**
4	1/8	4mME2**
6	1/8	6mME2**
6	1/4	6mME4**
6	3/8	6mME6**
6	1/2	6mME8**
8	1/4	8mME4**
8	3/8	8mME6**
10	1/4	10mME4**
10	3/8	10mME6**
10	1/2	10mME8**
12	1/4	12mME4**
12	3/8	12mME6**
12	1/2	12mME8**
15	3/8	15mME6**
15	1/2	15mME8**
16	1/2	16mME8**
20	1/2	20mME8**
20	3/4	20mME12**
22	3/4	22mME12**
25	3/4	25mME12**
25	1	25mME16**

MALE RUN TEE
BSPT/NPT

Fractional

TUBE	THREAD	PART No**
1/4	1/8	4TMT2**
1/4	1/4	4TMT4**
3/8	1/4	6TMT4**
1/2	3/8	8TMT6**
1/2	1/2	8TMT8**
5/8	1/2	10TMT8**
3/4	1/2	12TMT8**
3/4	3/4	12TMT12**

Metric

TUBE	THREAD	PART No**
6	1/8	6mTMT2**
6	1/4	6mTMT4**
10	1/4	10mTMT4**
12	3/8	12mTMT6**
12	1/2	12mTMT8**
16	1/2	16mTMT8**
20	1/2	20mTMT8**
20	3/4	20mTMT12**

EQUAL CROSS

Fractional

TUBE	PART No
1/8	2CR
3/16	3CR
1/4	4CR
5/16	5CR
3/8	6CR
1/2	8CR
5/8	10CR
3/4	12CR

Metric

TUBE	PART No
4	4mCR
6	6mCR
8	8mCR
10	10mCR
12	12mCR
16	16mCR
20	20mCR



MALE BRANCH TEE
BSPT/NPT

FEMALE BRANCH TEE
BSPP/NPT

FEMALE RUN TEE
BSPP/NPT

Fractional

TUBE	THREAD	PART No**
1/4	1/8	4TTM2**
1/4	1/4	4TTM4**
3/8	1/4	6TTM4**
1/2	1/4	8TTM4**
1/2	3/8	8TTM6**
1/2	1/2	8TTM8**
5/8	1/2	10TTM8**
3/4	1/2	12TTM8**
3/4	3/4	12TTM12**
1	3/4	16TTM12**

Fractional

TUBE	THREAD	PART No**
1/8	1/8	2TTF2**
1/4	1/8	4TTF2**
1/4	1/4	4TTF4**
3/8	1/4	6TTF4**
1/2	3/8	8TTF6**
1/2	1/2	8TTF8**
5/8	1/2	10TTF8**
3/4	3/4	12TTF12**

Fractional

TUBE	THREAD	PART No**
1/8	1/8	2TFT2**
1/4	1/8	4TFT2**
1/4	1/4	4TFT4**
3/8	1/4	6TFT4**
1/2	3/8	8TFT6**
1/2	1/2	8TFT8**

Metric

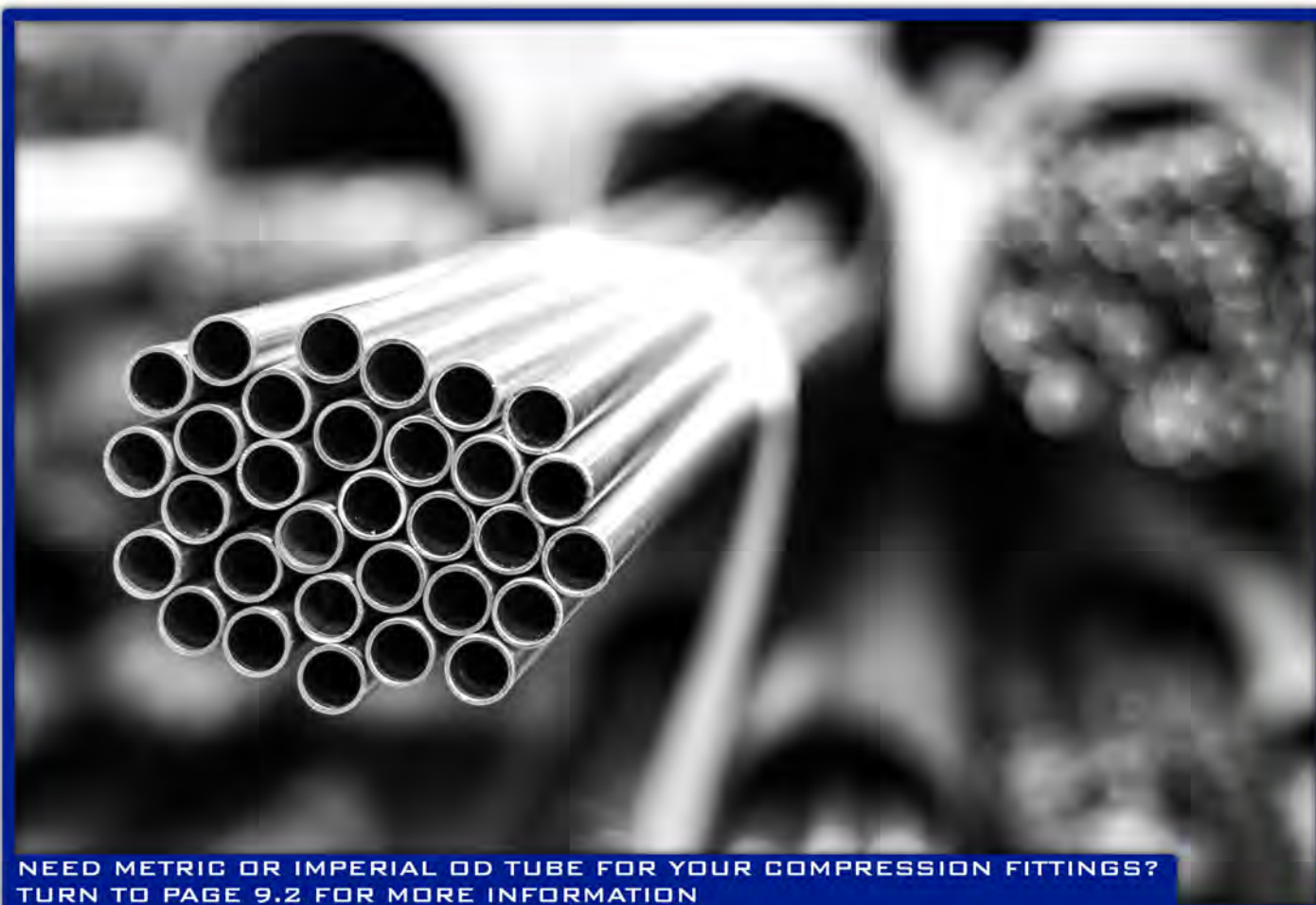
TUBE	THREAD	PART No**
6	1/8	6mTTM2**
6	1/4	6mTTM4**
10	1/4	10mTTM4**
12	3/8	12mTTM6**
12	1/2	12mTTM8**
15	1/2	15mTTM8**
16	1/2	16mTTM8**
20	1/2	20mTTM8**
20	3/4	20mTTM12**
25	3/4	25mTTM12**

Metric

TUBE	THREAD	PART No**
6	1/8	6mTTF2**
6	1/4	6mTTF4**
8	1/8	8mTTF2**
8	1/4	8mTTF4**
10	1/4	10mTTF4**
12	1/4	12mTTF4**
12	3/8	12mTTF6**
16	1/2	16mTTF8**

Metric

TUBE	THREAD	PART No**
6	1/4	6mTFT4**
8	1/8	8mTFT2**
8	1/4	8mTFT4**
10	1/4	10mTFT4**
12	1/4	12mTFT4**
12	3/8	12mTFT6**



NEED METRIC OR IMPERIAL OD TUBE FOR YOUR COMPRESSION FITTINGS?
TURN TO PAGE 9.2 FOR MORE INFORMATION

**YOUR NAME
HERE**

STAINLESS STEEL FITTINGS

TUBES :: PIPES :: BALL VALVES :: PIPE FITTINGS :: FLANGES



**A PLAIN VERSION OF THIS CATALOGUE
CAN BE PRODUCED WITH YOUR COMPANY BRANDING.**

**FOR FURTHER INFORMATION AND PRICING,
PLEASE CONTACT OUR SALES DEPARTMENT**



Product information

- 316 Stainless steel
- BSPP threaded as standard
- BSPT, NPT, Butt weld and socket weld ends available
- 1 Piece, 2 piece and 3 piece design
- Pressures to 400 bar (6000 psi)

Index

DESCRIPTION	PAGE
1 Piece reduced bore ball valve	6.2
1 Piece reduced bore ball valve NPT	6.2
2 Piece full bore ball valve	6.2
2 Piece full bore ball valve NPT	6.3
3 Piece full bore ball valve	6.2
Hygienic 3 piece full bore ball valve	6.2
Socket weld 3 piece full bore ball valve	6.2
Butt weld 3 piece full bore ball valve	6.2
Male/Female reduced bore ball valve	6.2
3-Way Reduced bore ball valve	6.2
Deadman spring return handle ball valve	6.3
6000 PSI Reduced bore ball valve	6.3
150LB 2 Piece flanged full bore ball valve	6.3
PN16 2 Piece flanged full bore ball valve	6.3
Mini ball valve reduced bore F/F	6.3
Mini ball valve reduced bore M/F	6.3



1PC REDUCED BORE BALL VALVE

SIZE	BSPP	PART No
1/4		RBV04
3/8		RBV06
1/2		RBV08
3/4		RBV12
1		RBV16
1-1/4		RBV20
1-1/2		RBV24
2		RBV32



2PC FULL BORE BALL VALVE

SIZE	BSPP	PART No
1/4		FBV04
3/8		FBV06
1/2		FBV08
3/4		FBV12
1		FBV16
1-1/4		FBV20
1-1/2		FBV24
2		FBV32
2-1/2		FBV40
3		FBV48



3PC FULL BORE BALL VALVE

SIZE	BSPP	PART No
1/4		FBVX04
3/8		FBVX06
1/2		FBVX08
3/4		FBVX12
1		FBVX16
1-1/4		FBVX20
1-1/2		FBVX24
2		FBVX32
2-1/2		FBVX40
3		FBVX48
4		FBVX64



HYGIENIC 3PC FULL BORE BALL VALVE

SIZE	TUBE OD	PART No
1/2		FBVX08HYG
3/4		FBVX12HYG
1		FBVX16HYG
1-1/2		FBVX24HYG
2		FBVX32HYG
2-1/2		FBVX40HYG
3		FBVX48HYG
4		FBVX64HYG



SOCKET WELD 3PC FULL BORE BALL VALVE

SIZE	SOCKET WELD N.B	PART No
1/4		FBVX04SW
3/8		FBVX06SW
1/2		FBVX08SW
3/4		FBVX12SW
1		FBVX16SW
1-1/4		FBVX20SW
1-1/2		FBVX24SW
2		FBVX32SW
2-1/2		FBVX40SW
3		FBVX48SW
4		FBVX64SW



BUTT WELD 3PC FULL BORE BALL VALVE

SIZE	BUTT WELD N.B	PART No
1/4		FBVX04BW
3/8		FBVX06BW
1/2		FBVX08BW
3/4		FBVX12BW
1		FBVX16BW
1-1/4		FBVX20BW
1-1/2		FBVX24BW
2		FBVX32BW
2-1/2		FBVX40BW
3		FBVX48BW
4		FBVX64BW



MALE/FEMALE REDUCED BORE BALL VALVE

SIZE	BSPT/BSPP	PART No
1/4		MFRBV04
3/8		MFRBV06
1/2		MFRBV08
3/4		MFRBV12
1		MFRBV16



3-WAY REDUCED BORE BALL VALVE

SIZE	BSPP	PART No L-PORT	PART No T-PORT
1/4		RBVL04	RBVT04
3/8		RBVL06	RBVT06
1/2		RBVL08	RBVT08
3/4		RBVL12	RBVT12
1		RBVL16	RBVT16
1-1/4		RBVL20	RBVT20
1-1/2		RBVL24	RBVT24
2		RBVL32	RBVT32



NPT 1PC REDUCED BORE BALL VALVE

SIZE	NPT	PART No
1/4		RBV04N
3/8		RBV06N
1/2		RBV08N
3/4		RBV12N
1		RBV16N
1-1/4		RBV20N
1-1/2		RBV24N
2		RBV32N



DEADMAN SPRING RETURN HANDLE
BALL VALVE

SIZE BSPP	PART No
1/4	DMFBV04
3/8	DMFBV06
1/2	DMFBV08
3/4	DMFBV12
1	DMFBV16
1-1/4	DMFBV20
1-1/2	DMFBV24
2	DMFBV32



6000 PSI REDUCED BORE
BALL VALVE BSPP

SIZE	PART No
1/4	6RBV04
3/8	6RBV06
1/2	6RBV08
3/4	6RBV12
1	6RBV16



6000 PSI REDUCED BORE
BALL VALVE NPT

SIZE	PART No
1/4	6RBV04N
3/8	6RBV06N
1/2	6RBV08N
3/4	6RBV12N
1	6RBV16N



NPT 2PC FULL BORE
BALL VALVE

SIZE NPT	PART No
1/4	FBV04N
3/8	FBV06N
1/2	FBV08N
3/4	FBV12N
1	FBV16N
1-1/4	FBV20N
1-1/2	FBV24N
2	FBV32N



PN16 2PC FLANGED FULL BORE
BALL VALVE

SIZE	PART No
1/2	FLBV1608
3/4	FLBV1612
1	FLBV1616
1-1/4	FLBV1620
1-1/2	FLBV1624
2	FLBV1632
2-1/2	FLBV1640
3	FLBV1648
4	FLBV1664



150LB 2PC FLANGED FULL BORE
BALL VALVE

SIZE	PART No
1/2	FLBV15008
3/4	FLBV15012
1	FLBV15016
1-1/4	FLBV15020
1-1/2	FLBV15024
2	FLBV15032
2-1/2	FLBV15040
3	FLBV15048
4	FLBV15064



MINI BALL VALVE REDUCED BORE
FEMALE/FEMALE

SIZE BSPP	PART No
1/4	MINI/RBV04
3/8	MINI/RBV06
1/2	MINI/RBV08
3/4	MINI/RBV12
1	MINI/RBV16



MINI BALL VALVE REDUCED BORE
MALE/FEMALE

SIZE BSPP	PART No
1/4	MINI/MFRBV04
3/8	MINI/MFRBV06
1/2	MINI/MFRBV08
3/4	MINI/MFRBV12
1	MINI/MFRBV16



"The best customer service in the industry"

**COMMITTED TO QUALITY
AND CUSTOMER SERVICE**

**"AT NERO CUSTOMER SERVICE HAS ALWAYS
BEEN AT THE CORE OF OUR BUSINESS. WE
STRIVE TO SUPPORT OUR CUSTOMERS WITH
FLEXIBILITY, EFFICIENCY AND ENTHUSIASM
ACROSS ALL OF OUR SALES AND DELIVERY
SERVICES."**





Product information

- 316 And 304 stainless steel
- BSPP threaded as standard (NPT and BSPT available)
- Sizes 1/4" to 4" (larger sizes available)
- Pressures to 400 bar (6000 psi)
- Higher pressures available

Index

DESCRIPTION	PAGE
Gate valve BSPP/NPT	7.2
Globe valve BSPP/NPT	7.2
Swing check valve BSPP/NPT	7.2
Y-strainer BSPP/NPT	7.2
Medium pressure check valve	7.2
Needle valve BSPP/NPT	7.3
Piston check valve BSPP/NPT	7.3



GATE VALVE 200LB

SIZE BSPP	PART No
3/8	GV06
1/2	GV08
3/4	GV12
1	GV16
1-1/4	GV20
1-1/2	GV24
2	GV32
2-1/2	GV40
3	GV48



GATE VALVE NPT 200LB

SIZE NPT	PART No
3/8	GV06N
1/2	GV08N
3/4	GV12N
1	GV16N
1-1/4	GV20N
1-1/2	GV24N
2	GV32N



GLOBE VALVE 200LB

SIZE BSPP	PART No
1/4	GLV04
3/8	GLV06
1/2	GLV08
3/4	GLV12
1	GLV16
1-1/4	GLV20
1-1/2	GLV24
2	GLV32



GLOBE VALVE NPT 200LB

SIZE NPT	PART No
1/4	GLV04N
3/8	GLV06N
1/2	GLV08N
3/4	GLV12N
1	GLV16N
1-1/4	GLV20N
1-1/2	GLV24N
2	GLV32N



SWING CHECK VALVE 200LB

SIZE BSPP	PART No
1/4	SCV04
3/8	SCV06
1/2	SCV08
3/4	SCV12
1	SCV16
1-1/4	SCV20
1-1/2	SCV24
2	SCV32
2-1/2	SCV40
3	SCV48



SWING CHECK VALVE NPT 200LB

SIZE NPT	PART No
1/4	SCV04N
3/8	SCV06N
1/2	SCV08N
3/4	SCV12N
1	SCV16N
1-1/4	SCV20N
1-1/2	SCV24N
2	SCV32N



Y-STRAINER 800LB

SIZE BSPP	PART No
1/4	YS04
3/8	YS06
1/2	YS08
3/4	YS12
1	YS16
1-1/4	YS20
1-1/2	YS24
2	YS32
2-1/2	YS40
3	YS48



Y-STRAINER NPT 800LB

SIZE NPT	PART No
1/4	YS04N
3/8	YS06N
1/2	YS08N
3/4	YS12N
1	YS16N
1-1/4	YS20N
1-1/2	YS24N
2	YS32N



CHECK VALVE - MEDIUM PRESSURE
304 (316 available) 20-35 BAR

SIZE BSPP	PART No
1/4	CRO04
3/8	CRO06
1/2	CRO08
3/4	CRO12
1	CRO16
1-1/4	CRO20
1-1/2	CRO24
2	CRO32
2-1/2	CRO40
3	CRO48
4	CRO64



NEEDLE VALVE
(400BAR) 6000 PSI

SIZE BSPP	PART No
1/4	NV04
3/8	NV06
1/2	NV08
3/4	NV12
1	NV16

NEEDLE VALVE NPT
(400BAR) 6000 PSI

SIZE NPT	PART No
1/4	NV04N
3/8	NV06N
1/2	NV08N
3/4	NV12N
1	NV16N

PISTON CHECK VALVE
(400BAR) 6000 PSI

SIZE BSPP	PART No
1/4	PCV04
3/8	PCV06
1/2	PCV08
3/4	PCV12
1	PCV16



PISTON CHECK VALVE NPT
(400BAR) 6000 PSI

SIZE NPT	PART No
1/4	PCV04N
3/8	PCV06N
1/2	PCV08N
3/4	PCV12N
1	PCV16N



ARE YOU AFTER BALL VALVES?
TURN BACK TO PAGE 6.1

ADDITIONAL TO OUR RANGE OF STANDARD LENGTH BARREL NIPPLES,
WE ALSO KEEP A SELECTION OF EXTENDED LENGTH NIPPLES.

PLEASE TURN TO PAGE 1.6 FOR MORE INFORMATION.





Product information

- 316/L And 304/L stainless steel
- Higher pressures available
- Sizes 1/2" to 10" (DN15 to DN250) Larger sizes available
- To BS4504/EN1092-1, DIN, ANSI/ASME B16.5 and BS10 standards
- PN16, ASA150 and Table E rated

Index

DESCRIPTION	PAGE
150 LB Slip-on	8.2
150 LB Weld neck	8.2
150 LB Blind	8.2
150 LB Threaded	8.2
PN16/3 Slip-on	8.2
PN16/2 Weld neck	8.2
PN16/8 Blind	8.3
PN16/4 Threaded	8.3
Table E Slip-on	8.3
Table E Blind	8.3
Table E Threaded	8.3



150 LB SLIP-ON



150 LB WELD NECK 316/L
SCH 40s



150 LB WELD NECK 316/L
SCH 10s

PIPE SIZE	PART No	304 PART No
1/2	F150S0.5	F150S0.5-304
3/4	F150S0.75	F150S0.75-304
1	F150S1.0	F150S1.0-304
1-1/4	F150S1.25	F150S1.25-304
1-1/2	F150S1.5	F150S1.5-304
2	F150S2.0	F150S2.0-304
2-1/2	F150S2.5	F150S2.5-304
3	F150S3.0	F150S3.0-304
4	F150S4.0	F150S4.0-304
5	F150S5.0	F150S5.0-304
6	F150S6.0	F150S6.0-304
8	F150S8.0	F150S8.0-304
10	F150S10.0	F150S10.0-304

PIPE SIZE	PART No
1/2	F150WN0.5
3/4	F150WN0.75
1	F150WN1.0
1-1/4	F150WN1.25
1-1/2	F150WN1.5
2	F150WN2.0
2-1/2	F150WN2.5
3	F150WN3.0
4	F150WN4.0
5	F150WN5.0
6	F150WN6.0

PIPE SIZE	PART No
1/2	F150WN0.5/S10
3/4	F150WN0.75/S10
1	F150WN1.0/S10
1-1/4	F150WN1.25/S10
1-1/2	F150WN1.5/S10
2	F150WN2.0/S10
2-1/2	F150WN2.5/S10
3	F150WN3.0/S10
4	F150WN4.0/S10
5	F150WN5.0/S10
6	F150WN6.0/S10



150 LB BLIND



150 LB THREADED 316/L



PN16/2 WELD NECK 316/L TYPE 11B

PIPE SIZE	PART No	304 PART No
1/2	F150B0.5	F150B0.5-304
3/4	F150B0.75	F150B0.75-304
1	F150B1.0	F150B1.0-304
1-1/4	F150B1.25	F150B1.25-304
1-1/2	F150B1.5	F150B1.5-304
2	F150B2.0	F150B2.0-304
2-1/2	F150B2.5	F150B2.5-304
3	F150B3.0	F150B3.0-304
4	F150B4.0	F150B4.0-304
5	F150B5.0	F150B5.0-304
6	F150B6.0	F150B6.0-304
8	F150B8.0	F150B8.0-304
10	F150B10.0	F150B10.0-304

THREAD BSPP	PART No
1/2	F150SP0.5
3/4	F150SP.75
1	F150SP1.0
1-1/4	F150SP1.25
1-1/2	F150SP1.5
2	F150SP2.0
2-1/2	F150SP2.5
3	F150SP3.0
4	F150SP4.0

PIPE SIZE	DN	PART No
1/2	15	F1620.5
3/4	20	F1620.75
1	25	F1621.0
1-1/4	32	F1621.25
1-1/2	40	F1621.5
2	50	F1622.0
2-1/2	65	F1622.5
3	80	F1623.0
4	100	F1624.0
5	125	F1625.0
6	150	F1626.0



PN16/3 SLIP-ON TYPE 01B

PIPE SIZE	DN	PART No	304 PART No
1/2	15	F1630.5	F1630.5-304
3/4	20	F1630.75	F1630.75-304
1	25	F1631.0	F1631.0-304
1-1/4	32	F1631.25	F1631.25-304
1-1/2	40	F1631.5	F1631.5-304
2	50	F1632.0	F1632.0-304
2-1/2	65	F1632.5	F1632.5-304
3	80	F1633.0	F1633.0-304
4	100	F1634.0	F1634.0-304
5	125	F1635.0	F1635.0-304
6	150	F1636.0	F1636.0-304
8	200	F1638.0	F1638.0-304
10	250	F16310.0	F16310.0-304



PN16/8 BLANK TYPE 05B

PN16/4 THREADED 316/L TYPE 13B

TABLE E SLIP-ON 316/L

PIPE SIZE	DN	316/L PART No	304/L PART No
1/2	15	F1680.5	F1680.5-304
3/4	20	F1680.75	F1680.75-304
1	25	F1681.0	F1681.0-304
1-1/4	32	F1681.25	F1681.25-304
1-1/2	40	F1681.5	F1681.5-304
2	50	F1682.0	F1682.0-304
2-1/2	65	F1682.5	F1682.5-304
3	80	F1683.0	F1683.0-304
4	100	F1684.0	F1684.0-304
5	125	F1685.0	F1685.0-304
6	150	F1686.0	F1686.0-304
8	200	F1688.0	F1688.0-304
10	250	F16810.0	F16810.0-304

THREAD BSPP	DN	PART No
1/2	15	F1640.5
3/4	20	F1640.75
1	25	F1641.0
1-1/4	32	F1641.25
1-1/2	40	F1641.5
2	50	F1642.0
2-1/2	65	F1642.5
3	80	F1643.0
4	100	F1644.0

PIPE SIZE	PART No
1/2	FES0.5
3/4	FES0.75
1	FES1.0
1-1/4	FES1.25
1-1/2	FES1.5
2	FES2.0
2-1/2	FES2.5
3	FES3.0
4	FES4.0
5	FES5.0
6	FES6.0



TABLE E BLIND 316/L

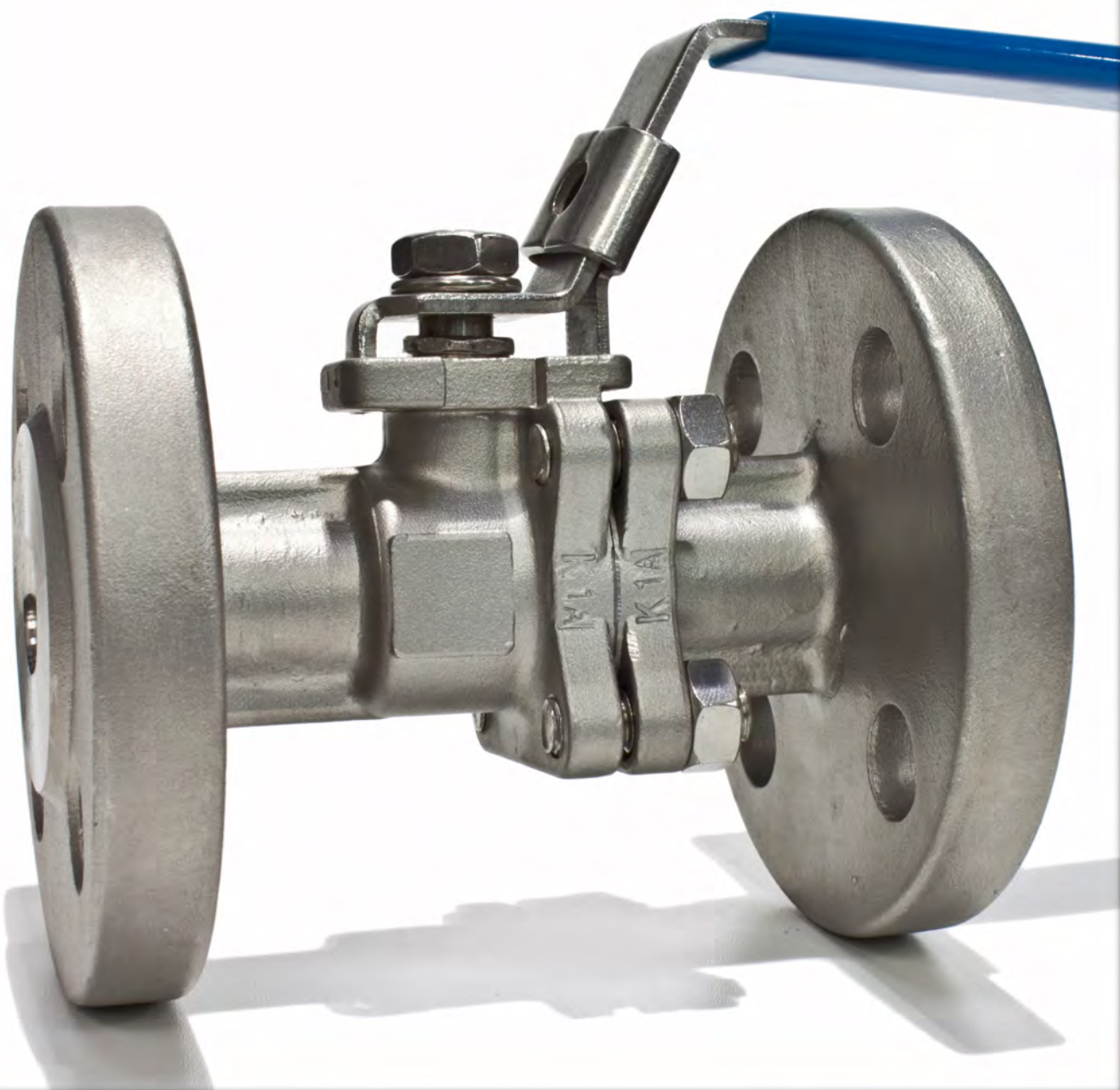
TABLE E THREADED 316/L

PIPE SIZE	PART No
1/2	FEB0.5
3/4	FEB0.75
1	FEB1.0
1-1/4	FEB1.25
1-1/2	FEB1.5
2	FEB2.0
2-1/2	FEB2.5
3	FEB3.0
4	FEB4.0
5	FEB5.0
6	FEB6.0

THREAD BSPP	PART No
1/2	FESP0.5
3/4	FESP0.75
1	FESP1.0
1-1/4	FESP1.25
1-1/2	FESP1.5
2	FESP2.0
2-1/2	FESP2.5
3	FESP3.0
4	FESP4.0

FOR FULL DIMENSIONS - VISIT WWW.NERO.CO.UK

TURN TO PAGE 6.3 TO VIEW OUR RANGE
OF PN16 AND ANSI 150LB FLANGED BALL VALVES





Product information

- Tube to ASTM A269/A213 seamless
- Sizes 1/8" to 8" (DN6 to DN200)
- Larger sizes available
- 316/L and 304/L Stainless steel
- Dimensions in mm
- Pipe to ASTM A312 welded



SEAMLESS TUBE 316/L

NOMINAL BORE (NB) WELDED

Imperial

OD INCHES	WALL THICKNESS MM	PART No
1/8	0.914	0.12520316S
3/16	0.914	0.187520316S
1/4	0.914	0.2520316S
1/4	1.218	0.2518316S
1/4	1.625	0.2516316S
3/8	0.914	0.37520316S
3/8	1.218	0.37518316S
3/8	1.625	0.37516316S
1/2	0.914	0.520316S
1/2	1.218	0.518316S
1/2	1.625	0.516316S
5/8	0.914	0.62520316S
5/8	1.218	0.62518316S
3/4	0.914	0.7520316S
3/4	1.218	0.7518316S
3/4	1.625	0.7516316S
1	1.218	1.018316S
1	1.625	1.016316S

Metric

OD MM	WALL THICKNESS MM	PART No
4	1	041316S
6	1	061316S
6	1.5	061.5316S
8	1	081316S
8	1.5	081.5316S
8	2	082316S
10	1	101316S
10	1.5	101.5316S
10	2	102316S
12	1	121316S
12	1.5	121.5316S
12	2	122316S
14	2	142316S
15	1	151316S
15	1.5	151.5316S
15	2	152316S
16	1	161316S
16	1.5	161.5316S
16	2	162316S
18	1.5	181.5316S
18	2	182316S
20	1.5	201.5316S
20	2	202316S
22	1.5	221.5316S
22	2	222316S
25	1.5	251.5316S
25	2	252316S
28	1.5	281.5316S
28	2	282316S
30	3	303316S
35	2	352316S
38	3	383316S
42	3	423316S

Schedule 10S

NB	OD MM	WALL THICKNESS MM	PART No	
			316/L	304/L
1/2	21.34	2.11	0.5S10316W	0.5S10304W
3/4	26.67	2.11	0.75S10316W	0.75S10304W
1	33.40	2.77	1.0S10316W	1.0S10304W
1-1/4	42.16	2.77	1.25S10316W	1.25S10304W
1-1/2	48.26	2.77	1.5S10316W	1.5S10304W
2	60.33	2.77	2.0S10316W	2.0S10304W
2-1/2	73.03	3.05	2.5S10316W	2.5S10304W
3	88.90	3.05	3.0S10316W	3.0S10304W
4	114.30	3.05	4.0S10316W	4.0S10304W
5	141.30	3.40	5.0S10316W	5.0S10304W
6	168.28	3.40	6.0S10316W	6.0S10304W
8	219.08	3.76	8.0S10316W	8.0S10304W
10	273.05	4.19	10.0S10316W	10.0S10304W

Schedule 40S

NB	OD MM	WALL THICKNESS MM	PART No	
			316/L	304/L
1/8	10.29	2.00	0.125S40316W	-
1/4	13.72	2.24	0.25S40316W	-
3/8	17.15	2.31	0.375S40316W	-
1/2	21.34	2.77	0.5S40316W	0.5S40304W
3/4	26.67	2.87	0.75S40316W	0.75S40304W
1	33.40	3.38	1.0S40316W	1.0S40304W
1-1/4	42.16	3.56	1.25S40316W	1.25S40304W
1-1/2	48.26	3.68	1.5S40316W	1.5S40304W
2	60.33	3.91	2.0S40316W	2.0S40304W
2-1/2	73.03	5.16	2.5S40316W	2.5S40304W
3	88.90	5.49	3.0S40316W	3.0S40304W
4	114.30	6.02	4.0S40316W	4.0S40304W
5	141.30	6.55	5.0S40316W	5.0S40304W
6	168.28	7.11	6.0S40316W	6.0S40304W
8	219.08	8.18	8.0S40316W	-

TO CALCULATE THE MAXIMUM WORKING PRESSURE FOR A GIVEN TUBE SIZE & QUALITY:

$$P = 2 \times S \times T \div D$$

WHERE

P = PRESSURE PSI

S = ALLOWABLE STRESS PSI

T = WALL THICKNESS IN mm

D = OUTSIDE DIAMETER IN mm

**ALLOWABLE STRESS 304, 316, 321 AND 347
= 18,700 PSI**

TO VIEW OUR RANGE OF SCHEDULE 80
BARREL NIPPLES, TURN TO PAGE 2.3





Product information

- 316 And 304 stainless steel
- Sizes 1/8" to 6" (DN6 to DN200) Larger sizes available
- Descaled finish as standard (Polished finishes available)
- Other grades available



U-BOLT WITH 2 HEX NUTS

Grade 316

PIPE SIZE NB	PART No	THREAD
1/8	UB0.125	M6
1/4	UB0.25	M6
3/8	UB0.375	M6
1/2	UB0.5	M6
3/4	UB0.75	M6
1	UB1.0	M6
1-1/4	UB1.25	M6
1-1/2	UB1.5	M10
2	UB2.0	M10
2-1/2	UB2.5	M10
3	UB3.0	M10
4	UB4.0	M12
5	UB5.0	M12
6	UB6.0	M12

PIPE RINGS WITH BOSS

Grade 304

SIZE N.B.	BOSS SIZE	PART No
1/8	M6	BPR0.125
1/4	M6	BPR0.25
3/8	M6	BPR0.375
1/2	M10	BPR0.5
3/4	M10	BPR0.75
1	M10	BPR1.0
1-1/4	M10	BPR1.25
1-1/2	M10	BPR1.5
2	M10	BPR2.0
2-1/2	M10	BPR2.5
3	M10	BPR3.0
4	M10	BPR4.0
5	M10	BPR5.0
6	M10	BPR6.0

BACKPLATE WITH BOSS ALL THREAD/THREADED ROD

Grade 304

PART No	THREAD SIZE
BPM6	M6
BPM10	M10 /M8

Grade 304

THREAD SIZE	PART No
M6	TRM6
M8	TRM8
M10	TRM10
M12	TRM12
M16	TRM16



HEXAGON NUT

Grade 304

SIZE	PART No
M6	LNM6
M8	LNM8
M10	LNM10
M12	LNM12
M16	LNM16



SADDLE TUBE CLIP

Grade 316

TUBE SIZE OD	PART No
1/4"/6MM	STC0.25
5/16"/8MM	STC08M
3/8"/10MM	STC10M
1/2"/12MM	STC0.5
15MM	STC15M
5/8"/16MM	STC16M
18MM	STC18M
3/4"	STC0.75
20MM	STC20M
7/8"/22MM	STC22M
1"/25MM	STC1.0
28MM	STC28M
1-1/4"/32MM	STC32M
1-1/2"/38MM	STC38M
42MM	STC42M

P-CLIP (Half saddle)

Grade 316

TUBE SIZE OD	PART No
1/4"/6MM	PC14-1
5/16"/8MM	PC516-1
3/8"/10MM	PC38-1
1/2"/12MM	PC12-1
5/8"/16MM	PC58-1

NOMINAL BORE SADDLE PIPE CLIP

Grade 316

PIPE SIZE NB	OD SIZE mm	PART No
1/4	13.72	SPC0.25
3/8	17.15	SPC0.375
1/2	21.34	SPC0.5
3/4	26.67	SPC0.75
1	33.40	SPC1.0
1-1/4	42.16	SPC1.25
1-1/2	48.26	SPC1.5
2	60.33	SPC2.0
2-1/2	73.03	SPC2.5
3	88.90	SPC3.0
3-1/2	101.60	SPC3.5
4	114.30	SPC4.0
5	141.30	SPC5.0
6	168.28	SPC6.0



*"A lifetime's knowledge
within one company"*

WEALTH OF INDUSTRY KNOWLEDGE

NEED ASSISTANCE OR HAVE A QUERY?

WITH OVER 100 YEARS COMBINED INDUSTRY
KNOWLEDGE WE'RE HERE MONDAY - FRIDAY (8:45
AM - 5:15 PM GMT)



Product information

- 316 Stainless steel
- Sizes 1/8" to 2" (larger sizes available)
- Plugs with flat face and 60° cone ends
- 60° cone to BS 5200

Index

DESCRIPTION	PAGE
Hex nipple BSPP	11.2
Hex nipple BSPP/BSPT	11.2
Hex nipple BSPP/NPT	11.2
Hex nipple BSPT/NPT	11.2
Male bulkhead BSPP	11.2
Female bulkhead BSPP	11.2
Reducing nipple BSPP	11.2
Reducing bush BSPP	11.2
Female/Male Adaptor	11.4
Reducing adaptor Female/Male	11.4
Hex plug flat BSPP	11.3
Hex plug cone BSPP	11.3
Socket head plug BSPT	11.3
Socket head plug NPT	11.3
Socket head plug BSPP (viton O-ring)	11.3
Hex flanged plug BSPP	11.3
Bonded washer	11.3



HEX NIPPLE BSPP

BSPP	PART No
1/8	HN02P
1/4	HN04P
3/8	HN06P
1/2	HN08P
3/4	HN12P
1	HN16P
1-1/4	HN20P
1-1/2	HN24P
2	HN32P



HEX NIPPLE BSPP/BSPT

BSPP	BSPT	PART No
1/8	1/8	HN02PT
1/4	1/4	HN04PT
3/8	3/8	HN06PT
1/2	1/2	HN08PT
3/4	3/4	HN12PT
1	1	HN16PT
1-1/4	1-1/4	HN20PT
1-1/2	1-1/2	HN24PT
2	2	HN32PT



HEX NIPPLE BSPP/NPT

BSPP	NPT	PART No
1/8	1/8	HN02PN
1/4	1/4	HN04PN
3/8	3/8	HN06PN
1/2	1/2	HN08PN
3/4	3/4	HN12PN
1	1	HN16PN
1-1/4	1-1/4	HN20PN
1-1/2	1-1/2	HN24PN
2	2	HN32PN



MALE BULKHEAD BSPP

BSPP	PART No
1/8	MBH02P
1/4	MBH04P
3/8	MBH06P
1/2	MBH08P
3/4	MBH12P
1	MBH16P
1-1/4	MBH20P
1-1/2	MBH24P
2	MBH32P



REDUCING NIPPLE BSPP

BSPP	BSPP	PART No
1/4	1/8	RN0402P
3/8	1/8	RN0602P
3/8	1/4	RN0604P
1/2	1/4	RN0804P
1/2	3/8	RN0806P
3/4	3/8	RN1206P
3/4	1/2	RN1208P
1	3/8	RN1606P
1	1/2	RN1608P
1	3/4	RN1612P
1-1/4	3/4	RN2012P
1-1/4	1	RN2016P
1-1/2	3/4	RN2412P
1-1/2	1	RN2416P
1-1/2	1-1/4	RN2420P
2	1	RN3216P
2	1-1/4	RN3220P
2	1-1/2	RN3224P



HEX NIPPLE BSPT/NPT

BSPT/NPT	PART No
1/8	HN02TN
1/4	HN04TN
3/8	HN06TN
1/2	HN08TN
3/4	HN12TN
1	HN16TN



FEMALE BULKHEAD BSPP

MALE BSPP	FEMALE BSPP	PART No
3/8	1/8	FBH02P
1/2	1/4	FBH04P
3/4	3/8	FBH06P
1	1/2	FBH08P
1-1/4	3/4	FBH12P
1-1/4	1	FBH16P



REDUCING BUSH BSPP
TYPE A/B

BSPP	BSPP	PART No	TYPE
1/4	1/8	RB0402P	B
3/8	1/8	RB0602P	A
3/8	1/4	RB0604P	B
1/2	1/4	RB0804P	A
1/2	3/8	RB0806P	B
3/4	1/4	RB1204P	A
3/4	3/8	RB1206P	A
3/4	1/2	RB1208P	B
1	1/2	RB1608P	A
1	3/4	RB1612P	B
1-1/4	3/4	RB2012P	A
1-1/4	1	RB2016P	B
1-1/2	1	RB2416P	A
1-1/2	1-1/4	RB2420P	B
2	1-1/4	RB3220P	A
2	1-1/2	RB3224P	A



HEX PLUG FLAT BSPP

BSPP	PART No
1/8	HP02P
1/4	HP04P
3/8	HP06P
1/2	HP08P
3/4	HP12P
1	HP16P
1-1/4	HP20P
1-1/2	HP24P
2	HP32P



HEX PLUG CONE SEAT BSPP

BSPP	PART No
1/8	CHP02P
1/4	CHP04P
3/8	CHP06P
1/2	CHP08P
3/4	CHP12P
1	CHP16P
1-1/4	CHP20P
1-1/2	CHP24P
2	CHP32P



SOCKET HEAD PLUG BSPT

BSPT	PART No
1/8	SHP02T
1/4	SHP04T
3/8	SHP06T
1/2	SHP08T
3/4	SHP12T
1	SHP16T
1-1/4	SHP20T
1-1/2	SHP24T
2	SHP32T



SOCKET HEAD PLUG NPT

NPT	PART No
1/8	SHP02N
1/4	SHP04N
3/8	SHP06N
1/2	SHP08N
3/4	SHP12N
1	SHP16N
1-1/4	SHP20N
1-1/2	SHP24N
2	SHP32N



SOCKET HEAD PLUG BSPP (Viton O-ring)

BSPP	PART No
1/8	SHP02P
1/4	SHP04P
3/8	SHP06P
1/2	SHP08P
3/4	SHP12P
1	SHP16P



HEX FLANGED PLUG BSPP

BSPP	PART No
1/8	HFP02P
1/4	HFP04P
3/8	HFP06P
1/2	HFP08P
3/4	HFP12P
1	HFP16P



BONDED WASHER

Stainless Steel 316 / Nitrile Rubber

SIZE BSP	PART No
1/8	BW02
1/4	BW04
3/8	BW06
1/2	BW08
3/4	BW12
1	BW16
1-1/4	BW20
1-1/2	BW24
2	BW32



FEMALE/MALE ADAPTOR
NPT

FEMALE/MALE ADAPTOR
NPT/BSPP

FEMALE/MALE ADAPTOR
BSPP/NPT

FEMALE/MALE ADAPTOR
BSPP

NPT	PART No
1/8	AFM0202N
1/4	AFM0404N
3/8	AFM0606N
1/2	AFM0808N
3/4	AFM1212N
1	AFM1616N

NPT/BSPP	PART No
1/8	AFM0202NP
1/4	AFM0404NP
3/8	AFM0606NP
1/2	AFM0808NP

BSPP/NPT	PART No
1/8	AFM0202PN
1/4	AFM0404PN
3/8	AFM0606PN
1/2	AFM0808PN
3/4	AFM1212PN
1	AFM1616PN

BSPP/NPT	PART No
1/8	AFM0202P
1/4	AFM0404P
3/8	AFM0606P
1/2	AFM0808P
3/4	AFM1212P
1	AFM1616P



REDUCING ADAPTOR
FEMALE/MALE NPT

REDUCING ADAPTOR
FEMALE/MALE BSPP/NPT

REDUCING ADAPTOR
FEMALE/MALE NPT/BSPP

REDUCING ADAPTOR
FEMALE/MALE BSPP

NPT	PART No
1/4-1/8	RAFM0402N
3/8-1/4	RAFM0604N
1/2-1/4	RAFM0804N
1/2-3/8	RAFM0806N
3/4-3/8	RAFM1206N
3/4-1/2	RAFM1208N
1-1/2	RAFM1608N
1-3/4	RAFM1612N

BSPP/NPT	PART No
1/4-1/8	RAFM0402PN
3/8-1/4	RAFM0604PN
1/2-1/4	RAFM0804PN
1/2-3/8	RAFM0806PN
3/4-3/8	RAFM1206PN
3/4-1/2	RAFM1208PN

NPT/BSPP	PART No
1/4-1/8	RAFM0402NP
3/8-1/4	RAFM0604NP
1/2-1/4	RAFM0804NP
1/2-3/8	RAFM0806NP
3/4-3/8	RAFM1206NP
3/4-1/2	RAFM1208NP

BSPP	PART No
1/4-1/8	RAFM0402P
3/8-1/4	RAFM0604P
1/2-1/4	RAFM0804P
1/2-3/8	RAFM0806P
3/4-3/8	RAFM1206P
3/4-1/2	RAFM1208P

TO VIEW OUR RANGE OF MINI BALL VALVES
TURN TO PAGE 6.3





Product information

- 316 and 303 Stainless steel
- Sizes 1/8" to 6" (DN6 to DN150)
- Quick connect and release action
- Pressures to 380 BAR (5500 psi)

Index

DESCRIPTION	PAGE
Hydraulic coupling ISO B	12.2
Hydraulic nipple ISO B	12.2
Coupler male Type B	12.2
Coupler female Type D	12.2
Coupler hose Type C	12.2
Adaptor female Type A	12.2
Adaptor hose Type E	12.2
Adaptor male Type F	12.2
Dustcap Type DC	12.2
Dust plug Type DP	12.2



HYDRAULIC COUPLING & NIPPLE 303 SS
ISO B

SIZE BSPP	PART No COUPLING	PART No NIPPLE
1/8	QRC02	QRN02
1/4	QRC04	QRN04
3/8	QRC06	QRN06
1/2	QRC08	QRN08
3/4	QRC12	QRN12
1	QRC16	QRN16

COUPLER MALE TYPE B

SIZE BSPT	PART No
1/2	CCB08
3/4	CCB12
1	CCB16
1-1/4	CCB20
1-1/2	CCB24
2	CCB32
2-1/2	CCB40
3	CCB48
4	CCB64
5	CCB80
6	CCB96

COUPLER FEMALE TYPE D

SIZE BSPP	PART No
1/2	CCD08
3/4	CCD12
1	CCD16
1-1/4	CCD20
1-1/2	CCD24
2	CCD32
2-1/2	CCD40
3	CCD48
4	CCD64
5	CCD80
6	CCD96



COUPLER HOSE TYPE C

SIZE HOSE	PART No
1/2	CCC08
3/4	CCC12
1	CCC16
1-1/4	CCC20
1-1/2	CCC24
2	CCC32
2-1/2	CCC40
3	CCC48
4	CCC64
5	CCC80
6	CCC96

ADAPTOR FEMALE TYPE A

SIZE BSPP	PART No
1/2	CCA08
3/4	CCA12
1	CCA16
1-1/4	CCA20
1-1/2	CCA24
2	CCA32
2-1/2	CCA40
3	CCA48
4	CCA64
5	CCA80
6	CCA96

ADAPTOR HOSE TYPE E

SIZE HOSE	PART No
1/2	CCE08
3/4	CCE12
1	CCE16
1-1/4	CCE20
1-1/2	CCE24
2	CCE32
2-1/2	CCE40
3	CCE48
4	CCE64
5	CCE80
6	CCE96



ADAPTOR MALE TYPE F

SIZE BSPT	PART No
1/2	CCF08
3/4	CCF12
1	CCF16
1-1/4	CCF20
1-1/2	CCF24
2	CCF32
2-1/2	CCF40
3	CCF48
4	CCF64
5	CCF80
6	CCF96

DUSTCAP TYPE DC

SIZE	PART No
1/2	CCDC08
3/4	CCDC12
1	CCDC16
1-1/4	CCDC20
1-1/2	CCDC24
2	CCDC32
2-1/2	CCDC40
3	CCDC48
4	CCDC64
5	CCDC80
6	CCDC96

DUSTPLUG TYPE DP

SIZE	PART No
1/2	CCDP08
3/4	CCDP12
1	CCDP16
1-1/4	CCDP20
1-1/2	CCDP24
2	CCDP32
2-1/2	CCDP40
3	CCDP48
4	CCDP64
5	CCDP80
6	CCDP96



PRODUCT INFORMATION

We often get asked for items not shown in this catalogue and can usually supply them within a few days although some will take longer.

In fact we are regularly adding to our stock range after catalogue updates, so please contact us for any products you do not see listed --- we can probably help you.

PLEASE CONTACT OUR SALES TEAM WITH YOUR ENQUIRY

TEL : 0121 665 3900



0121 665 3900

MONDAY-FRIDAY 8:45 - 5:15



0121 665 3909



INFO@NERO.CO.UK



TRADE COUNTER OPEN:

MONDAY-FRIDAY 8:45 - 5:15



WWW.NERO.CO.UK



SERVICES AVAILABLE
TNT NEXT DAY UP TO 5:30PM
TNT NEXT DAY BEFORE 12:00PM
NEXT DAY BEFORE 10:00AM
TNT NEXT DAY BEFORE 9:00 AM
TNT SATURDAY DELIVERY
TNT 2 DAY SERVICE
SCOTTISH HIGHLANDS & ISLANDS - 2 DAY SERVICE
NI, SCILLY ISLES, CHANNEL ISLANDS & ISLE OF MAN
1ST CLASS POST
ROYAL MAIL SPECIAL DELIVERY
ROYAL MAIL INTERNATIONAL
PARCEL FORCE INTERNATIONAL

NO MINIMUM ORDER CHARGE

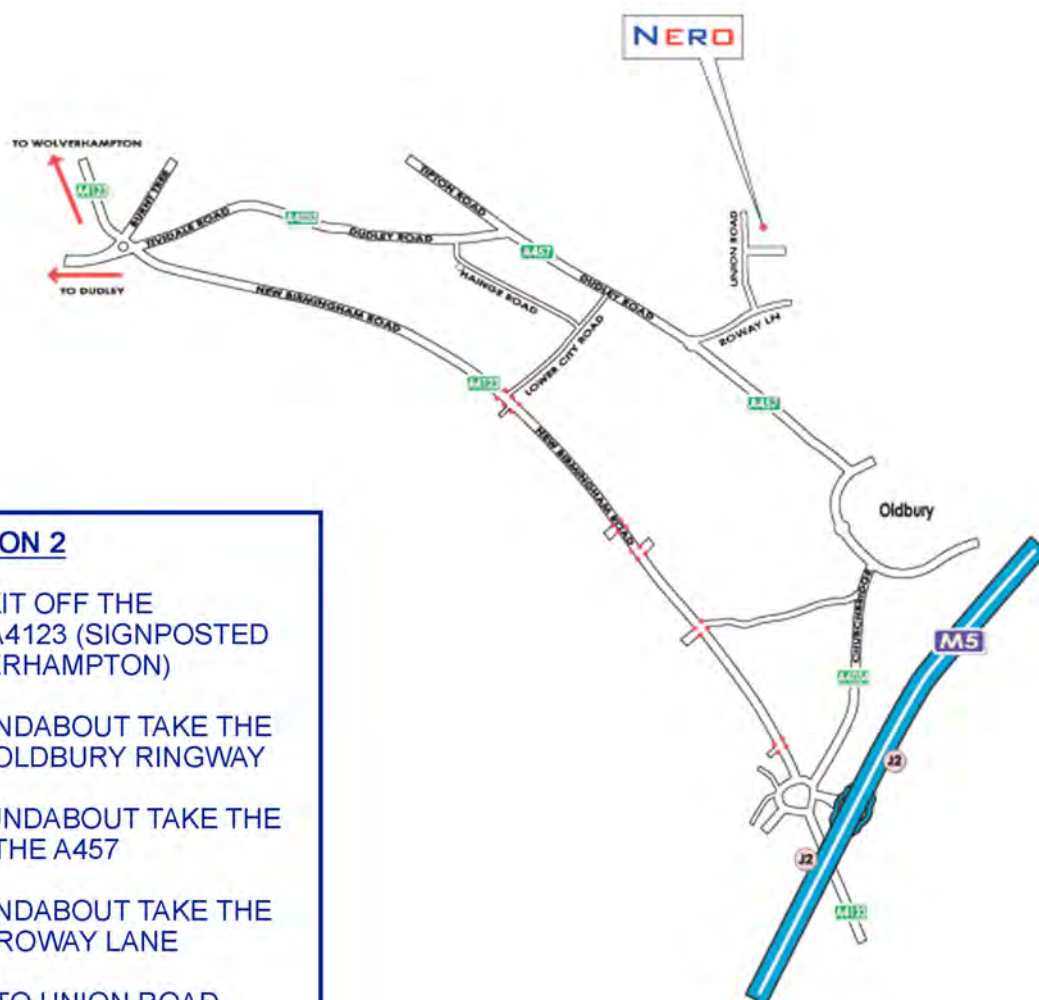
ALL DESCRIPTIONS, ILLUSTRATIONS AND PART NUMBERS WITHIN THIS CATALOGUE ARE FOR GUIDANCE ONLY AND ARE SUBJECT TO CHANGE AT ANY TIME WITHOUT NOTICE.

BEFORE PERMANENT INSTALLATION, TEST THE PARTS UNDER THE SPECIFIC CONDITIONS OF YOUR APPLICATION.

FOR ACTUAL FIGURES, REFERENCE SHOULD BE MADE TO THE CURRENT EDITION OF THE APPROPRIATE STANDARDS WHERE APPLICABLE.

NO LIABILITY WILL BE HELD BY NERO FOR ANY INCORRECT INFORMATION PRINTED.

DIRECTIONS



FROM M5 JUNCTION 2

1. TAKE THE 5th EXIT OFF THE ROUNDABOUT A4123 (SIGNPOSTED DUDLEY/WOLVERHAMPTON)
2. AT THE 1st ROUNDABOUT TAKE THE 1st EXIT ON TO OLDBURY RINGWAY
3. AT THE 2nd ROUNDABOUT TAKE THE 1st EXIT ON TO THE A457
4. AT THE 1st ROUNDABOUT TAKE THE 3rd EXIT ON TO ROWAY LANE
5. TURN LEFT ON TO UNION ROAD
6. NERO ARE ON THE RIGHT HAND SIDE



NERO

PIPELINE CONNECTIONS LTD
UNIT 2, UNION ROAD
OLDBURY
WEST MIDLANDS
B693EX

TEL: +44 (0)121 665 3900

FAX: +44 (0)121 665 3909

E-MAIL: INFO@NERO.CO.UK

WEB: WWW.NERO.CO.UK