

R2 MARINE

# **/ Naval architecture & design studio**

R2 Marine key figures	<b>/ 3</b>
About us	<b>/ 4</b>
Services	<b>/ 5-7</b>
R2 Marine competences	<b>/ 8</b>
Portfolio — professional boats	<b>/ 9-18</b>
Defence concepts	<b>/ 19-20</b>
SAR concepts	<b>/ 21</b>
CTV, RSV, FiFi concepts	<b>/ 22</b>
Fishing & aquaculture concepts	<b>/ 23</b>
Ferry concepts	<b>/ 23</b>
Landing craft concepts	<b>/ 24</b>
Portfolio — pleasure boats & yachts	<b>/ 25-30</b>
Contacts	<b>/ 31</b>

## / R2 Marine key figures

Awards



Designing boats since

**2012**

Growing team of

**20**

Mockup studio

**13x5m**

Designs in operation

**30+**

Concepts delivered

**60+**

# **Naval architecture. Design. Engineering.**

We combine design and engineering expertise with creativity to improve your experience at sea, whether you're out there for work, exploration, or pleasure.

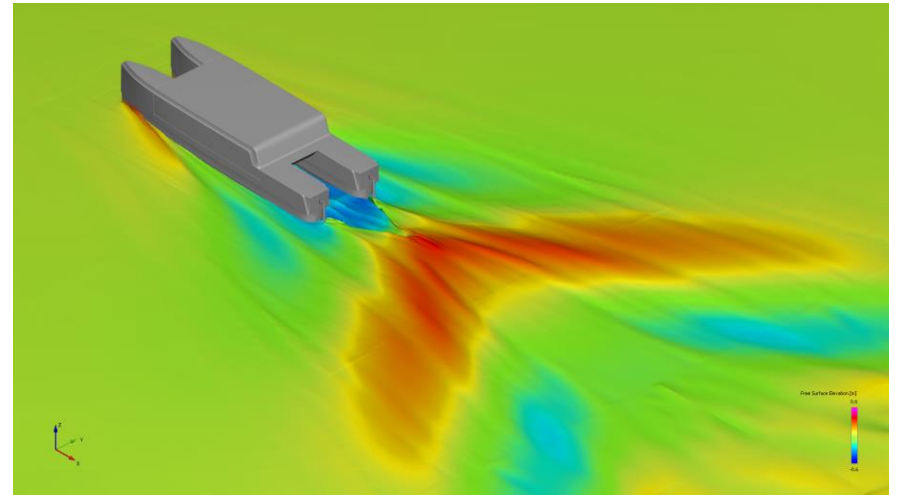
Designing an excellent boat requires a complex process of skillfully balancing its conflicting aspects, such as interior layout, exterior design, structural integrity, and performance. When you work with us, you can rely on our skilful team to meet your requirements exactly. The result? A synergistic design in which every element performs to its full potential.

# Naval architecture

01 / 03

Our portfolio includes everything from electric cruisers to passenger ferries. In operation all over the world, our boats are testament to our expertise in hull forms, propulsion systems, and construction materials. Whether you're seeking a new design or an adaptation of an existing one, you can be sure that we have the experience, technological proficiency, and creativity to exceed your expectations.

1. Hull form design and development
2. CFD analysis
3. Weight calculation
4. Stability analysis
5. Propulsion system design
6. Structural design
7. Rules & regulations compliancy
8. Specifications writing



# Design

02 / 03

With our extensive experience, we can help you discover market opportunities — uncovering any hidden challenges — and create practical solutions. We believe in clear communication, which allows us to fine-tune initial concept plans so that they align perfectly with your requirements. We use sophisticated VR modelling technology, too, meaning you'll be able to step into full-size mock-ups, to examine and evaluate for yourself the design's ergonomics and usability.

1. Idea validation & market fit assessment
2. Concept design
3. Exterior & interior design
4. Photorealistic visualizations & animations
5. CMF design
6. Ergonomics & usability
7. Full size mockups
8. VR models

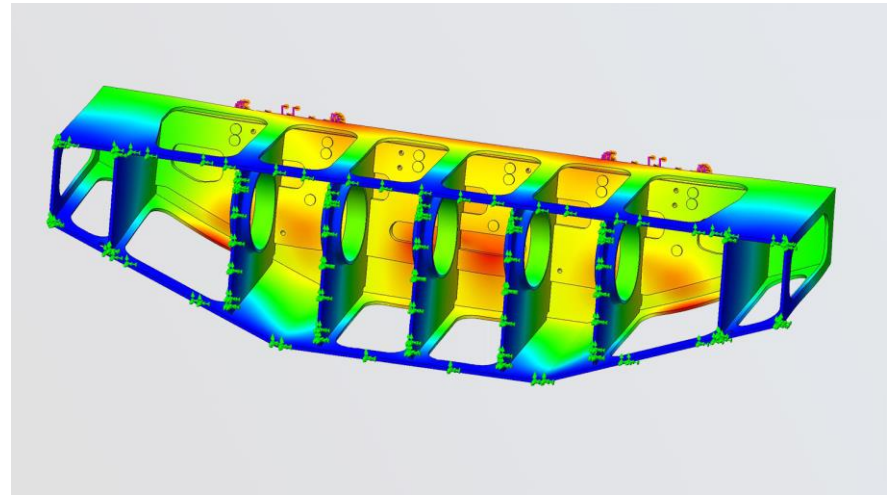


# Engineering

03 / 03

As our extensive portfolio of completed design projects demonstrates, we have a proven ability to evaluate a boat's production time, cost, and maintenance requirements. Moreover, for each project we carefully consider what production methods to use to maximize cost-effectiveness. And if you're seeking original thinking, you've come to the right place. We're experts in the research and development of custom solutions and the evaluation of prototypes.

- |                                      |                              |
|--------------------------------------|------------------------------|
| 1. Mechanical engineering            | 5. Production tooling design |
| 2. Developing new mechanical systems | 6. Workshop drawings         |
| 3. Prototype evaluation              | 7. FEM analysis              |
| 4. Systems design                    | 8. Production support        |



# **Added value for shipyards**

### **/ 01** Production know how

Hands on experience from welding, assembly, installations.

### **/ 02** Operational experience of vessel use

Team consists also individuals with background in operating professional vessels.

### **/ 03** Tender processes

Experience from public tender processes.

### **/ 04** Broad network

We know the market.

### **/ 05** Sales and marketing material

High quality renderings and animations to support presales and sales.

### **/ 06** Proactive innovation

Developing innovations for competitive advantage.

# **Professional boats**

From conceptualization to execution, we stand as architects of maritime efficiency, meticulously designing and engineering workboats that redefine industry standards. Our commitment to innovation ensures that each vessel is a testament to our dedication to pushing boundaries and delivering solutions tailored to the unique challenges of professional marine environments.



## Serecraft P14-1 SSV

**/ Norwegian Navy (Kewatec)**

Full design

Application	Defence & Security
Length	14,1 M
Beam	4,0 M
Engine Range	2 x 500 - 700 HP
Propulsion	Waterjet
Speed Range	38 - 45 kN
Applied Rules	DNV Craft



## SC SAR 17

**/ Icelandic Search and Rescue Association (Kewatec)**

Concept, naval architecture, structures, selected systems

Application	Search and rescue
Length	16,9 M
Beam	4,8 M
Engine Range	2 x 500 - 800 HP
Propulsion	Waterjet
Speed Range	30 - 40 kN
Applied Rules	DNV Craft



## Serecraft S14

/ University Centre in Svalbard (UNIS, NO) (Kewatec)

Full design

Application	Harbour & Terminal
Length	14,1 M
Beam	4,2 M
Engine Range	2 x 500 - 650 HP
Propulsion	Propeller
Speed Range	25 - 40 KN
Draft	1,1 M
Applied Rules	FMAW, NBS



## SC S8

/ Kewatec

Full design

Application	Fishing & Aquaculture
Length	7,9 M
Beam	3 M
Engine Range	250 - 400 HP
Propulsion	Propeller
Fuel	350 L
Speed Range	20 - 30 KN
Draft	1,1 M
Applied Rules	FMAW, NBS



## SC M12

### / SC M12, Norway (Kewatec)

Concept and basic design

Application	Defence & Security, Harbour & Terminal
Length	12,4 M
Beam	3,6 M
Engine Range	2 x 300 - 500 HP
Propulsion	Waterjet
Speed Range	30 - 40 KN
Applied Rules	FMAW, NBS



## Ambulance 2200

### / Norwegian First Responders (Buksér of Berging) (Kewatec)

Concept design, Hull design

Application	Search & Rescue
Length	22,2 M
Beam	7,5 M
Engine Range	2 x 700 - 1000 HP
Propulsion	IPS, Waterjet
Speed Range	25 - 35 KN
Applied Rules	NBS



## e-Work 2360

### / e-Work 2360 Research vessel (Kewatec)

Concept design, Hull design

Application	Research
Length	23,6 M
Beam	6,4 M
Engine Range	2 x 600 - 700 HP
Propulsion	Propeller
Speed Range	20 - 25 KN
Applied Rules	NBS



## e-Work 2390 Survey

### / e-Work 2390 Survey (Kewatec)

Concept design, Hull design

Application	Research
Length	23,9 M
Beam	6 M
Engine Range	2 x 600 - 900 HP
Propulsion	Propeller
Speed Range	18 - 23 KN
Applied Rules	NBS



# Navy Tug

/ Norwegian Navy (Kewatec)

Concept design

Application	Defence
Length	7,5 M
Propulsion	Waterjet
Applied Rules	NBS



# 13m Expedition Boat

/ Boomeranger Boats / Viking cruises

Full design

Application	Expedition
Length	13,3 M
Beam	3,2 M
Engine Range	2 x 440
Propulsion	Waterjet
Speed Range	25 - 35 KN
Applied Rules	FMAW,NBS



## C-1300 IB Patrol

### / Dutch Coast Guard (Boomeranger Boats)

Full design

Application	Defence & security
Length	14 M
Beam	3,3 M
Engine Range	3 x 370
Propulsion	Sterndrives
Speed Range	25 – 45 KN
Applied Rules	LR Grey boat code



## C-1300 VIP

### / Boomeranger Boats

Concept design and structure

Application	Defence & security
Length	12,4 M
Beam	3,2 M
Engine Range	3 x 400
Propulsion	Outboards
Speed Range	40 – 60 KN
Applied Rules	RINA, ISO



## SRB 85

**/ German Society for the Rescue  
of Shipwrecked Persons (DGzRS) (Arctic Boats)**

Full design

Application	Search and rescue
Length	12,4 M
Beam	3,2 M
Engine Range	3 x 400
Propulsion	Outboards
Speed Range	40 – 60 KN
Applied Rules	FMAW



## Callboats 10

**/ Callboats**

Full design

Application	Transport
Length	10 M
Beam	3,5 M
Engine Range	2 x 20 kw
Propulsion	Pods
Speed Range	5-15 KN
Applied Rules	ISO



## Callboats 10L

### / Callboats

Full design

Application	Transport
Length	10 M
Beam	3,5 M
Engine Range	2 x 20 kw
Propulsion	Pods & passive foil system
Speed Range	5-20 KN
Applied Rules	UK Work boat code



## X Shore PRO

### / X Shore

Full design on an existing platform

Application	Transport
Length	8 M
Beam	2,6 M
Engine Range	Electric
Propulsion	Propeller
Applied Rules	ISO



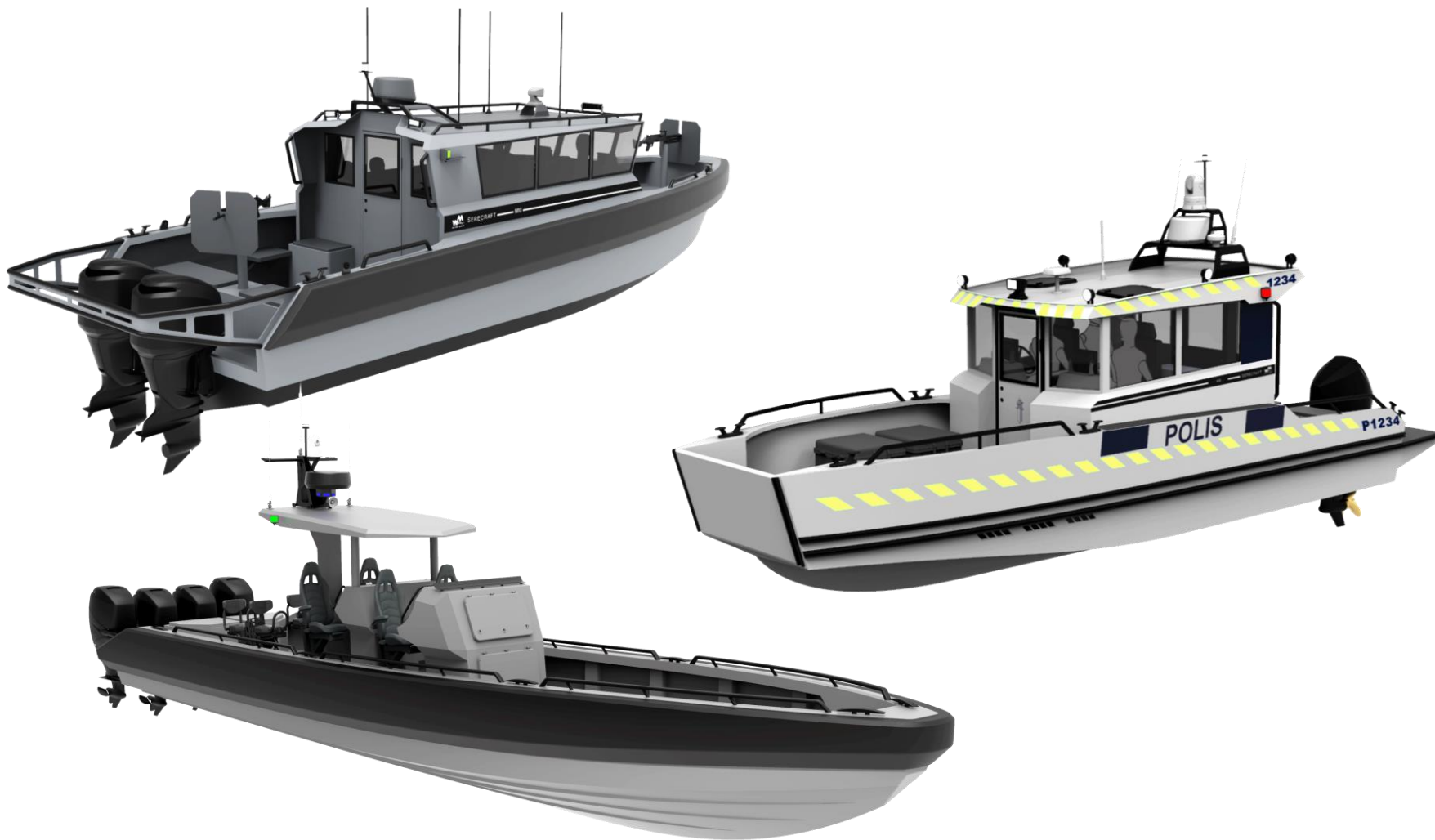
## Ice going passenger ferry

**/ Concept proposal for private company**

Concept design

Application	Transport
Length	18 M
Engine Range	1x 150 kw
Propulsion	Propeller + nozzle
Speed Range	5-12 KN
Applied Rules	FMAW

## / Portfolio — defence concepts



## **/ Portfolio — defence concepts**



## / Portfolio — SAR concepts



## / Portfolio — CTV, RSV, FiFi concepts



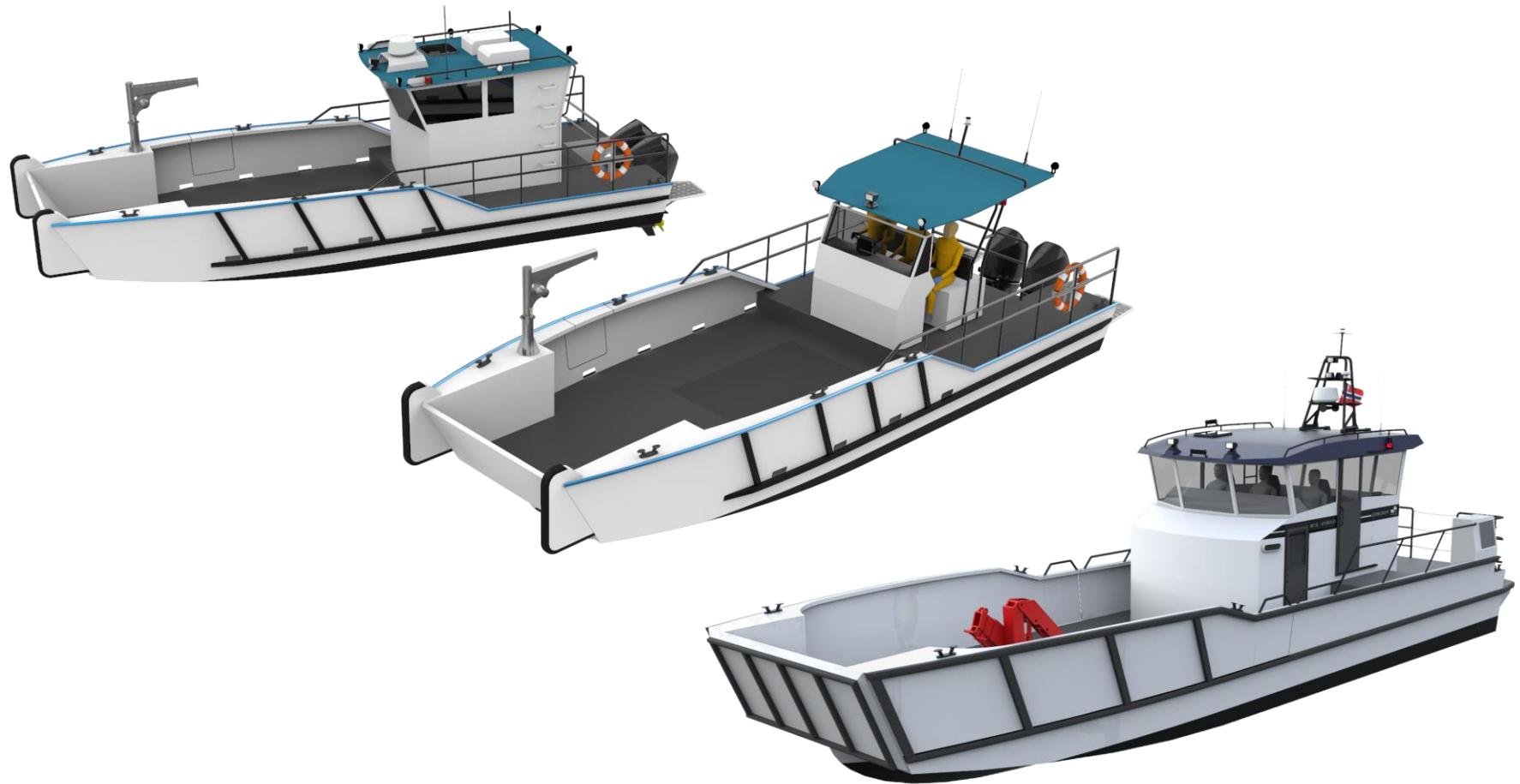
## / Portfolio — fishing & aquaculture concepts



## / Portfolio — ferry concepts



## **/ Portfolio — landing craft concepts**



## **Pleasure boats & yachts**

At R2 Marine, we understand that every vessel tells a unique story, and our team of skilled naval architects and designers are dedicated to bringing those stories to life. Whether you envision an elegant yacht for entertaining guests in style or a high-performance pleasure boat for thrilling adventures, our bespoke designs cater to your desires.



## Quarken 35

### / Quarken 35 (Quarken Boats)

Hull design, concept design, structural design, milling files

Application	Recreational
Length	10,68 M
Beam	3,48 M
Engine Range	2 x 300 HP
Propulsion	Outboards
Max speed	45 kN



## Quarken 27

### / Quarken 27 (Quarken Boats)

Hull design, concept design, structural design, milling files

Application	Recreational
Length	8,35 M
Beam	2,59 M
Engine Range	300 HP
Propulsion	Outboard
Max speed	45 kN



## Fjord 39 XP

### / Fjord 39 XP

Hull design, naval architecture, milling files, structural design

Application	Recreational
Length	11,6 M
Beam	3,89 M
Engine Range	2 x 400
Propulsion	Outboard/Inboard
Max speed	45 kN



## EXPLR 44

### / EXPLR 44, XO Boats

Hull design, naval architecture, milling files, structural design

Application	Recreational
Length	13,7 M
Beam	3,7 M
Engine Range	2 x 450 – 2x 600
Propulsion	Outboard
Max speed	50 kN



## DFNDR A8

### / DFNDR A8, XO Boats

Hull design, naval architecture, structural design

Application	Recreational
Length	8,1 M
Beam	2,67 M
Engine Range	2 x 225 / 1 x 450
Propulsion	Outboard
Max speed	50 KN



## Yamarin 80 DC

### / Yamarin 80 DC, Yamarin Boats

Concept design, hull design, naval architecture, milling files, structural design, systems design

Application	Recreational
Length	8,28 M
Beam	2,62 M
Engine Range	300 HP
Propulsion	Outboard
Max speed	43 KN



## OQS 80ft

### / OQS 80ft catamaran

Concept design, Hull design, naval architecture, structural design

Application	Yacht
Length	24 M
Beam	10,7 M
Engine Range	2 x 1000 hp
Propulsion	Inboard+IPS
Max speed	30 kN



## OQS Carbon tender 14ft

### / OQS Carbon tender 14ft

Full design

Application	Tender
Length	4 M
Beam	2 M
Engine Range	20-70 hp
Propulsion	Outboard
Max speed	35 kN



## Coastal Explorer 52ft

### / Coastal Explorer 52ft

Full design, brand development

Application	Recreational
Length	15,5 M
Beam	4,74 M
Engine Range	2 x 600 hp
Propulsion	Inboard
Max speed	35 kN



## Juva e/y 30

### / Juva e/y 30

Full design, brand development

Application	Recreational
Length	9,2 M
Beam	2,9 M
Engine Range	2x15 kW
Propulsion	Inboard
Max speed	12 kN

## **/ Contacts**

### **For project inquiries:**

**Arttu Mylläri**  
CEO

[arttu.myllari@r2marine.fi](mailto:arttu.myllari@r2marine.fi)  
+358505669222

### **General information:**

[contact@r2marine.fi](mailto:contact@r2marine.fi)

Copyright © 2024 R2 Marine Oy  
[r2marine.fi](https://r2marine.fi)