

ATLANTIS



Atlantis Marine Power

Spring 2018

ATLANTIS MARINE POWER — SHORT FORM CATALOGUE

KOHLER® IN POWER. SINCE 1920.

- Kohler Commercial
- Kohler Leisure



- FW Murphy J1939 / N2K Displays



- EmpirBus NXT

*Power Products Including
DC Distribution, Control &
Monitoring, Displays and
Marine Generators for*

*Commercial
Work Boats
Pilot Boats
Transfer Boats
Ferries*

Atlantis Marine Power
Atlantis House
Western Wood Way,
Langage Science Park,
Plympton,
Plymouth.
UK PL7 5BG

sales@atlantismarine.com

Tel: 01752 208810

www.atlantismarine.com

GENERATORS

for Commercial Marine



KOHLER
IN POWER. SINCE 1920.

WE BUILT OUR REPUTATION ON RELIABILITY.

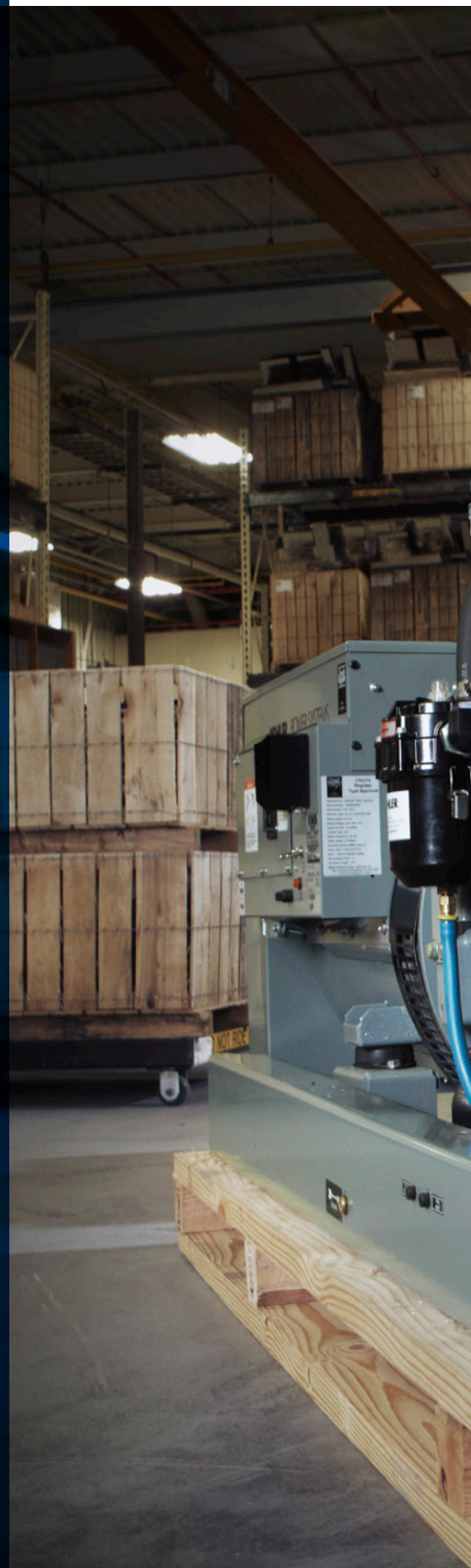
Out on the water, the only thing that matters is reliability. Because everybody knows the money stops as soon as your generator does. That's where we come in.

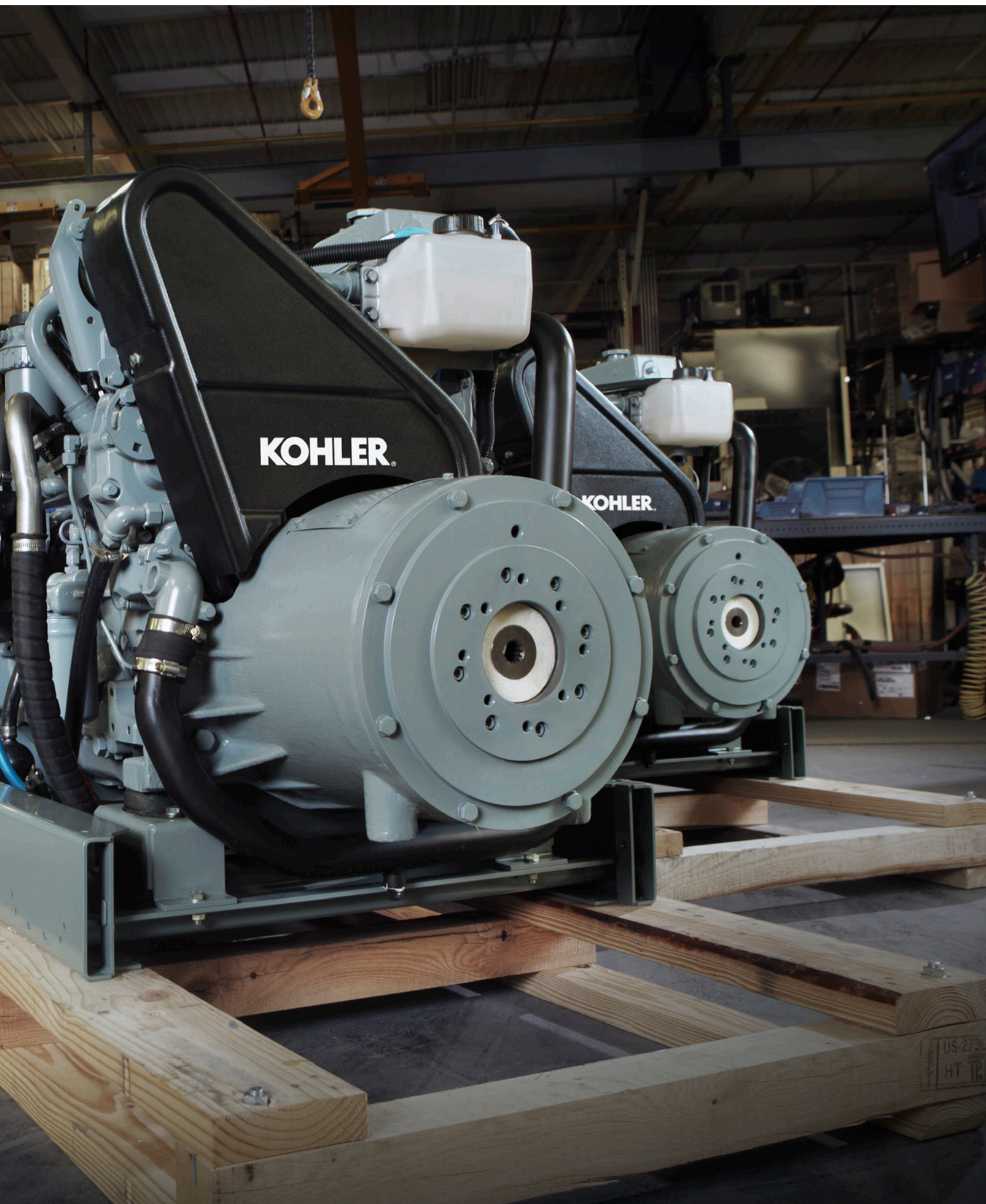
We're Kohler. And for nearly 100 years, we've built some of the best commercial generators on water. Truth is, we're a lot like you. We're good at what we do. And we make no apologies for it.

Every weld, wire and circuit is a badge of honor. If our craftsmen have touched it, it is good and true. And if our name is on it, it's going to work.



*From handcrafted alternators
to hand-built controllers, we take
pride in building power systems
you can depend on.*





KOHLER.

KOHLER.

US 2730
HT 12

THEN WE BUILT THE FUTURE.

THE FIRST AND ONLY SINGLE-SOURCE GENERATOR PARALLELING SYSTEM



We created the world's first commercial marine generators with factory-installed, pretested paralleling controllers and automatic voltage regulators.* Everything is automatic and easier to use than ever before.

Instant Auto Transfer/Paralleling

All Decision-Maker 3500 controllers are equipped with auto-transfer functionality. When the first generator's load is light, the second generator automatically drops off. When the load is heavy, the second generator automatically comes online to provide the power needed to carry the load. Or if one generator is in trouble, the second generator senses the problem, starts up and takes the load automatically.

Repower-Ready

The Decision-Maker 3500 is compatible with existing systems, so repowers are easier than ever. When wired for V-bias/S-bias inputs or droop, it can parallel with existing load-share modules for even more installation options.

Remote Monitoring

Monitor and control your generators from your boat's existing monitoring system. Or enjoy a more comprehensive experience with generator-specific monitors from Kohler.

Proper Engine Combustion

Our electronically controlled high-pressure common rail fuel system provides just the right amount of fuel at just the right time.

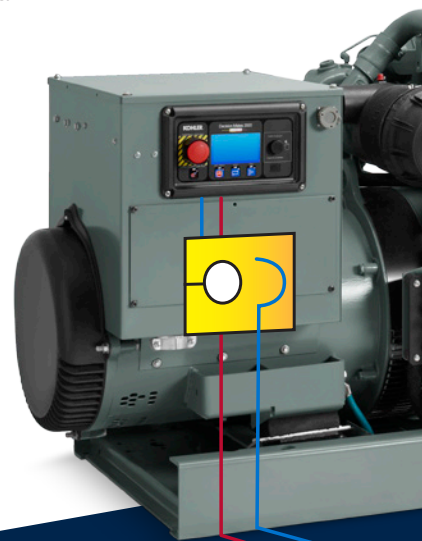
Corrosion and Vibration Protection

Fully potted circuit boards and sealed connectors protect the controller and alternator from marine environmental conditions and heavy vibration.

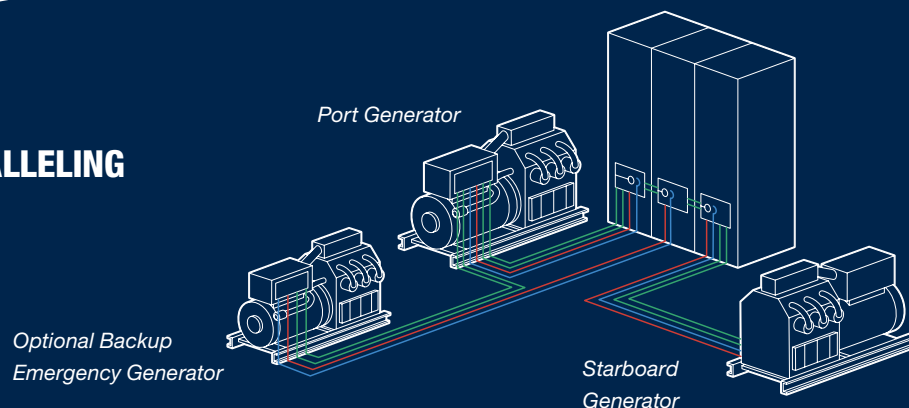
Kohler-Made

Nearly every component is designed, built and serviced by Kohler. Just the way it should be.

*Patents pending and certifications granted

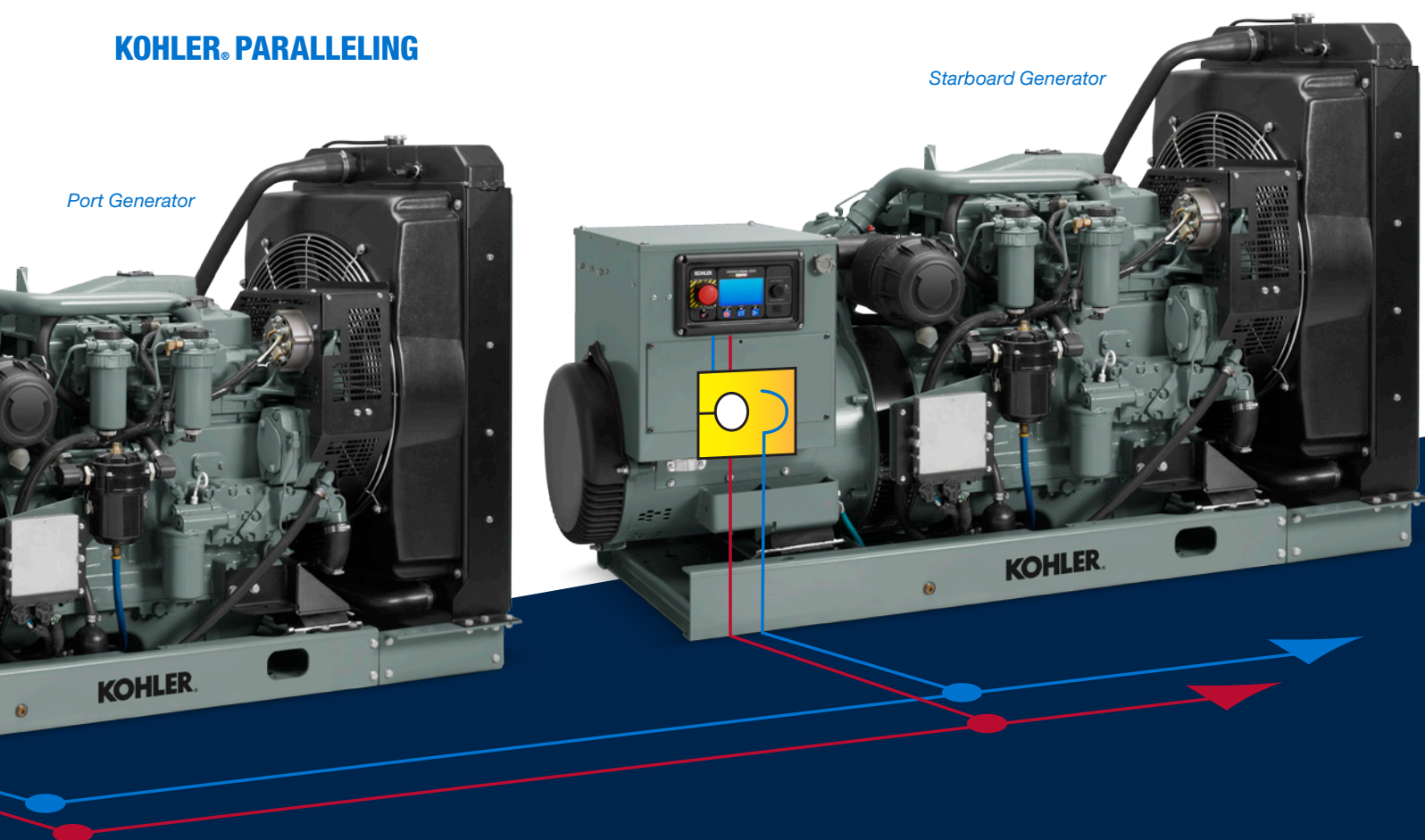


CONVENTIONAL PARALLELING



Innovation

KOHLER® PARALLELING



- AC Wiring
- Paralleling Wires
- Voltage and Speed Bias Wires
- Motorized Circuit Breaker

botto

IT'S ALL ABOUT YOUR BOTTOM LINE.

lin

At the end of the day, all we care about is
boosting your business. It's that simple.

That's why we created the Decision-Maker[®] 3500 controller. It eliminates the need for expensive, oversized switchgear, costly add-ons and complicated installations. Which means you save big on cost and space.

Not only that, our new controllers feature auto-transfer functionality. If one generator is in trouble, the second generator senses the problem, starts up and takes on the load—automatically. You won't lift a finger. Your boat will never be dead in the water. And you can keep your business in business.

Our exclusive paralleling controller features an easy-to-use digital display. And it's multilingual, displaying text in English, Spanish, Arabic, Chinese or Portuguese.



mm
ne





TAKE A CLOSER LOOK AT THE BENEFITS TO YOUR BUSINESS.

1 **KOHLER. DECISION-MAKER. 3500 CONTROLLER**

- Easy-to-read 4.3-inch LED backlit color graphic LCD display
- Functions include bus sensing, first-on logic and synchronization
- Monitors critical power information: voltage, current, frequency, power
- Monitors critical engine information: oil pressure, coolant temperature, fuel flow, runtime, battery voltage
- Monitors analog inputs, warnings and faults
- Remote-start and remote-stop convenience
- Single- and 3-phase paralleling available
- Seamless transfer to shore power

2 **KOHLER. SMALLER, MORE ADVANCED ALTERNATOR***

- KOHLER Fast-Response® X alternator with 12-lead, multivoltage reconnectable stators and permanent-magnet exciter are standard
- Electronic isochronous governing is standard (frequency regulation: .5%, voltage regulation: +/- .5%†)
- Premium isolated-ground DC electrical system is standard
- 50 and 60 Hz models available
- Easier maintenance—split activator relocated to front of alternator for easy access

*Compared to previous KOHLER FR2 alternators.
†Except 40EOZDJ/33EFOZDJ and 40EOZCJ/33EFOZCJ models.
‡Compared to previous KOHLER generator models.



3 SMALLER FOOTPRINT[‡]

- Overall footprint is 16 inches shorter, for more power density in a smaller package[‡]
- Easy to install and repower; fits into smaller applications where other generators can't
- Pre-engineered cooling system packages available in heat-exchange, radiator and keel-cooled versions

4 HIGH-PRESSURE COMMON RAIL FUEL SYSTEM

- Dramatically reduces the effects of poor performance (cylinder wall glazing, engine slobber, etc.)
- Available on Tier 3-compliant models
- Manages electrical operating speed for short dips with fast recovery
- An industry best for optimal performance with large loads
- Meets the highest emission standards in the world

5 QUIETER, WITH LESS VIBRATION[‡]

- Redesigned sound shield with separate engine and alternator compartments
- Improved air management for lower sound levels[‡]
- Improved mounts provide less vibration[‡]
- Sound shield separates "cool air in" from "warm air out" for improved hot/cold air management and overall performance



WHY KOHLER®

PROVEN RELIABILITY

We are a company of craftsmen guided by a single purpose: quality. Every KOHLER commercial marine generator is extensively quality-tested start to finish—before model release and before leaving the factory. The result is proven reliability.

NO-HASSLE WARRANTY

We cover the first year, with the option to extend to three years.

GLOBAL SUPPORT

With nearly 1000 sales and service locations around the world, we're everywhere you go.

KOHLER®
IN POWER. SINCE 1920.

**AMERICAS
CARIBBEAN**

920 565 3381
800 544 2444
Fax 920 459 1646

CHINA

+86 21 26062169
+86 400 1808 900

**EUROPE
MIDDLE EAST
AFRICA**

+31 168 331630
Fax +31 168 331631

SOUTHEAST ASIA

+65 6660 2681
Fax +65 6264 6455

INDIA

+91 80 42867000
Fax +91 80 23615972

KOHLER®
IN POWER. SINCE 1920.



KOHLERPOWER.COM

GENERATORS

for Marine Pleasure Craft



KOHLER
IN POWER. SINCE 1920.



ALWAYS PRESENT NEVER NOTICED

Drift away for a while, and let the waves guide your journey.
Rest. Relax. Unwind. We've been expecting you.

This is Kohler—a company of craftsmen guided
by a singular purpose: your experience.
Those quiet moments filled with peace and comfort.



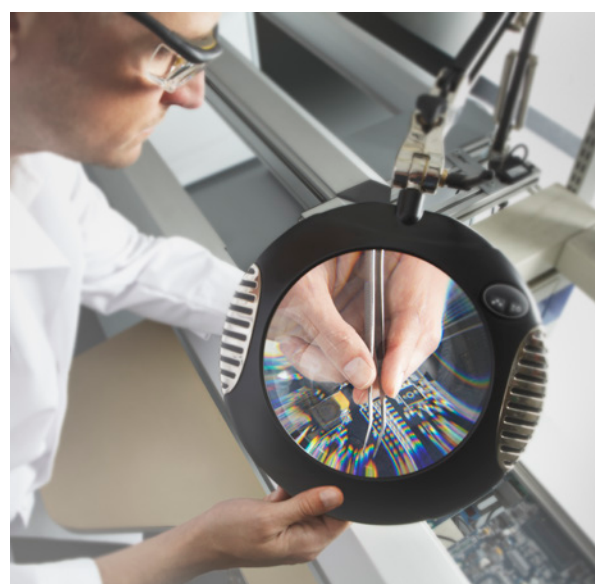
BUILT TO BE FORGOTTEN.

On the surface, this philosophy may seem unexpected. But truth be told it's a mission that makes us who we are.

At Kohler, we believe every generator we make—every weld, wire and circuit—is a testament to our quality. That's why our latest marine gensets are smaller and quieter with less vibration than ever before. Intentionally crafted to escape attention.

They are the most advanced, most reliable machines we've ever made—not that you'd notice.





*Technological revolution
inspires everything we do—from
setting new sound standards
to creating the world's most
intelligent controller.*



*Our latest marine generators
are smaller and quieter with less
vibration than previous models.*

*Intentionally designed
to go unnoticed.*





SO QUIET, EVEN WHISPERS TRAVEL WELL.

Our redesigned sound shield—with separate engine and alternator compartments—and improved air management system significantly reduce sound levels. The quiet is all you hear.

TAKE AWAY VIBRATION. **ALL THAT'S LEFT IS COMFORT.**

Ask any modern-day mariner, and they'll tell you there is a magic at sea that trumps the lure of a million landlocked destinations. Out here your escape is fully realized, where delight arrives with dawn and neither deadline nor demand can find you.

On a pleasure craft, comfort is king, and vibration an unwelcome guest. That's why we go to great lengths to ensure the only thing you feel from your generator is peace of mind.

Our proprietary vibration mount cushions the engine as it moves to eliminate vibration. It's what separates our marine generators from all others.





THE FIRST AND ONLY.

Kohler has created the first marine generators with factory-installed, pretested paralleling controllers and automatic voltage regulators.*

KOHLER PARALLELING

Night Generator



Port Generator



THE WORLD'S MOST INTELLIGENT GENERATOR SYSTEM



HUGE SAVINGS

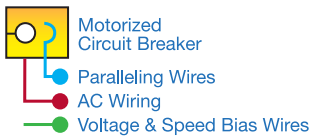
Our revolutionary KOHLER® Decision-Maker® 3500 eliminates the need for oversized switchgear, costly add-ons and complicated installations. Built-in load-management software eliminates overfueling issues and the need for exhaust treatment systems.

INSTANT PARALLELING

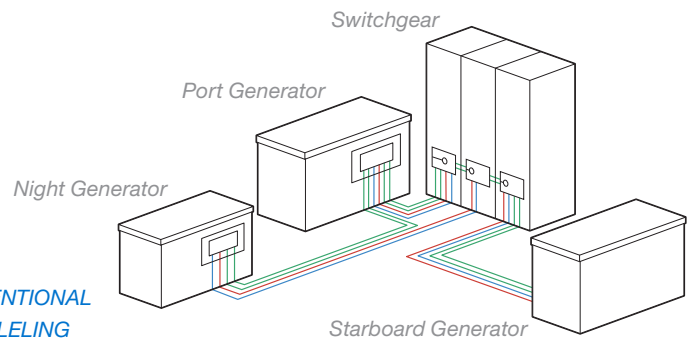
PGEN connection parallels two or more KOHLER generators with a single communication wire for maximum power potential. When the first generator's load is light, the second generator automatically drops off. When the load is heavy, the second generator automatically comes online to provide the power needed to carry the load. Gensets can be factory-tested in parallel.

*Patents and certifications pending.

Starboard Generator



CONVENTIONAL
PARALLELING



REPOWER-READY

The Decision-Maker 3500 is compatible with existing systems, so repowers are easier than ever. When wired for V-bias/S-bias inputs or droop, it can parallel with existing load-share modules for even more installation options.

REMOTE MONITORING

Monitor and control the generator from anywhere on the vessel, even at multiple locations.

PROPER ENGINE COMBUSTION

Our electronically controlled high-pressure common rail fuel system provides just the right amount of fuel at just the right time.

CORROSION PROTECTION

Fully potted circuit boards and sealed connectors protect the controller and alternator from marine environment conditions.

FEWER FAILURE POINTS

Fewer failure points mean better reliability.

SMALLER SIZE

KOHLER generators are more space-conscious than ever before. By developing our advanced paralleling system, we eliminated the need for bulky, oversized switchgear.

LOOK CLOSELY, AND YOU'LL FIND
INNOVATION IN EVERY DETAIL.



1 KOHLER® DECISION-MAKER® 3500 CONTROLLER

- Easy-to-read 4.3-inch LED backlit color graphic LCD display
- Functions include bus sensing, first-on logic and synchronization
- Monitors critical power information—voltage, current, frequency, power
- Monitors critical engine information—oil pressure, coolant temperature, fuel flow, runtime, battery voltage
- Monitors analog inputs, warnings and faults
- Remote-start and remote-stop convenience
- Single- and 3-phase paralleling available
- Seamless transfer to shore power

2 QUIETER, WITH LESS VIBRATION*

- Redesigned sound shield with separate engine and alternator compartments
- Improved air management for lower sound levels*
- Improved mounts provide less vibration*
- Sound shield separates “cool air in” from “warm air out” for improved hot/cold air management and overall performance

3 SMALLER FOOTPRINT*

- Overall footprint is 16 in. shorter, for more power density in a smaller package*
- Easy to install and repower; fits into smaller applications where other generators can't
- Pre-engineered cooling system packages available in heat-exchange, radiator and keel-cooled versions

4 SMALLER, MORE ADVANCED ALTERNATOR†

- KOHLER Fast-Response® X alternator with 12-lead, multivoltage reconnectable stators and permanent-magnet exciter is standard
- Electronic isochronous governing is standard (frequency regulation: .5%, voltage regulation: +/- .5%‡)
- Premium isolated-ground DC electrical system is standard
- 50 and 60 Hz models available
- Easier maintenance—split activator relocated to front of alternator for easy access

5 HIGH-PRESSURE COMMON RAIL FUEL SYSTEM

- Dramatically reduces the effects of poor performance (cylinder wall glazing, engine slobber, etc.)
- Available on Tier 3-compliant models
- Manages electrical operating speed for short dips with fast recovery
- An industry best for optimal performance with large loads
- Meets the highest emissions standards in the world

*Compared to previous KOHLER generator models.

†Compared to previous KOHLER FR2 alternators.

‡Except 40EOZDJ/33EFOZDJ and 40EOZCJ/33EFOZCJ models.



WHY KOHLER®

PROVEN RELIABILITY

Every KOHLER® marine generator is extensively quality-tested—before model release and before leaving the factory.

The result is proven reliability.

PREMIUM LIMITED WARRANTY

We cover the first two years, with the option to purchase additional years.

GLOBAL SUPPORT

With nearly 1000 sales and service locations around the world, we're everywhere you go.

KOHLER®
IN POWER. SINCE 1920.

**AMERICAS
CARIBBEAN**

+1 920 565 3381
+1 800 544 2444
Fax +1 920 459 1646

CHINA

+86 21 26062169
+86 400 1808 900

**EUROPE
MIDDLE EAST
AFRICA**

+31 168 331630
Fax +31 168 331631

SOUTHEAST ASIA

+65 6660 2681
Fax +65 6264 6455

INDIA

+91 80 42867000
Fax +91 80 23615972

KOHLER®
IN POWER. SINCE 1920.

9001
KOHLER
POWER SYSTEMS
NATIONALLY REGISTERED

KOHLERPOWER.COM

POWERVIEW® DISPLAYS

GET CONNECTED



CHANGE THE WAY YOU LOOK AT EVERYTHING

Revolutionizing the Human Machine Interface, Murphy by Enovation Controls delivers an enhanced user experience for the tough, rugged environments you work in every day. By integrating cutting-edge technology such as Bluetooth, Wi-Fi and Ethernet in combination with our extensive application expertise and system integration knowledge, we deliver unparalleled solutions.



MURPHY'S A LEADER IN BRINGING SUPERIOR DISPLAY TECHNOLOGY TO YOUR RUGGED APPLICATIONS. WITH ITS BEST-IN-CLASS VIEWABILITY, THESE DISPLAYS CAN EASILY BE SEEN EVEN IN FULL SUNLIGHT. EACH DISPLAY IS RIGOROUSLY TESTED, KEEPING YOU PRODUCTIVE AND INFORMED. WITH A WIDE RANGE OF SIZES, OPTIONS AND POWER, THERE'S A POWERVIEW DISPLAY THAT WILL BE A PERFECT FIT FOR YOUR APPLICATION.



PV380

Whether you have an electronic or mechanical engine, the PV380 features a robust, multifunction display for advanced monitoring of multiple engine and machine parameters on an easy-to-read 3.8-inch QVGA monochrome LCD. Capable of handling sophisticated engine diagnostics as well as basic engine alarm/shutdown, the display provides an out-of-the-box solution for your system. The PV380 can easily be programmed on site with its intuitive screens and sturdy push buttons.

PV485

The PV480 meets the needs of mechanical and modern I1939 engines and equipment applications with a wide array of configurable I/O. Its 4.3-inch full-color display and five push buttons are easy to use with work gloves, and its small size makes it easy to fit in tighter spaces. The PV480 is a popular solution for in-cab and outside the cab applications.

High Bright Display with RS485

NEW

PV450

Designed for use in modern electronic engines, the PV450 is a compact, fully configurable display capable of integrating electronic engine, transmission and equipment information into an easy-to-read, full-color interface. Its 4.3-inch screen is perfect for applications with tighter spaces, and it delivers the same powerful performance as Murphy's larger configurable displays.

GET CONNECTED AT: novationcontrols.com/powerviewdisplays



NEW

NEW

NEW

PV780/PV780B

Boasting a full-featured, configurable display, the PV780 and PV780B integrates vital engine, transmission and diagnostic information into an easy-to-read operator interface. The 7-inch bonded LCD screen produces brighter, smoother graphics. These displays integrate even more functionality by way of the five available digital inputs. The new PV780B features a larger processor, 8G flash and Bluetooth and Wi-Fi connectivity.

PV1100

Featuring a high-speed processor, the new PV1100's 10.6-inch, full-color touch screen brings technology to your cab by putting an infotainment hub at your fingertips. The large, high-resolution screen provides more real estate to easily monitor important application information at a glance. Wi-Fi and Ethernet capabilities deliver your data on demand. With an integrated onboard stereo you have access to AM/FM, weather band radio and streaming audio via Bluetooth and USB for a truly connected experience.

PV1200

The PV1200 revolutionizes your in-cab experience with a 12.3-inch striking wide-format display providing the most real estate to ensure critical functions are highly visible and easily accessible. This glove touch display includes Bluetooth, Wi-Fi and Ethernet connectivity and offers an expansive 8GB of storage. The PV1200 delivers the technology you need and the technology you desire for an enhanced user experience.

POWERVISION

CONFIGURATION STUDIO®

THIS POWERFUL SOFTWARE DEVELOPMENT TOOL PROVIDES OEMs WITH COMPLETE CUSTOMIZATION VIA GRAPHICAL PROGRAMMING OR SCRIPTING. CHANGE THE LOOK AND FEEL OF EQUIPMENT SCREENS, CUSTOMIZE PARAMETERS, EDIT TROUBLESHOOTING INFORMATION AND UPLOAD COMPANY BRANDING TO CREATE TRULY UNIQUE SCREENS FOR YOUR APPLICATION QUICKLY AND EASILY WITH THIS USER-FRIENDLY SOFTWARE.



MURPHY
by **ENOVATION CONTROLS**

In order to bring you the highest quality, full-featured products, we reserve the right to change our specifications and designs at any time.

Specifications and performance data subject to change without notice.
Certified specifications and performance data available upon request.

5311 S 122nd E Ave Tulsa, OK 74146 USA

918.317.4100

www.enovationcontrols.com

1712039 06-17



MURPHY®

RUGGED, RELIABLE, ROBUST MID-RANGE, FULL COLOR DISPLAY

Rich Feature Set.
Fully Customizable.
Compact Size.

THE POWERVIEW™
450

Compact size to fit your application

Bonded LCD for optimum viewability

Streamlined modular design

Easy-to-use configuration software

Data logging

Customizable bezel, buttons,
I/O interface and more



The PowerView 450 is a compact, fully configurable display designed for use in modern electronic engines. It integrates electronic engine, transmission and equipment information into an easy to read, full-color interface.

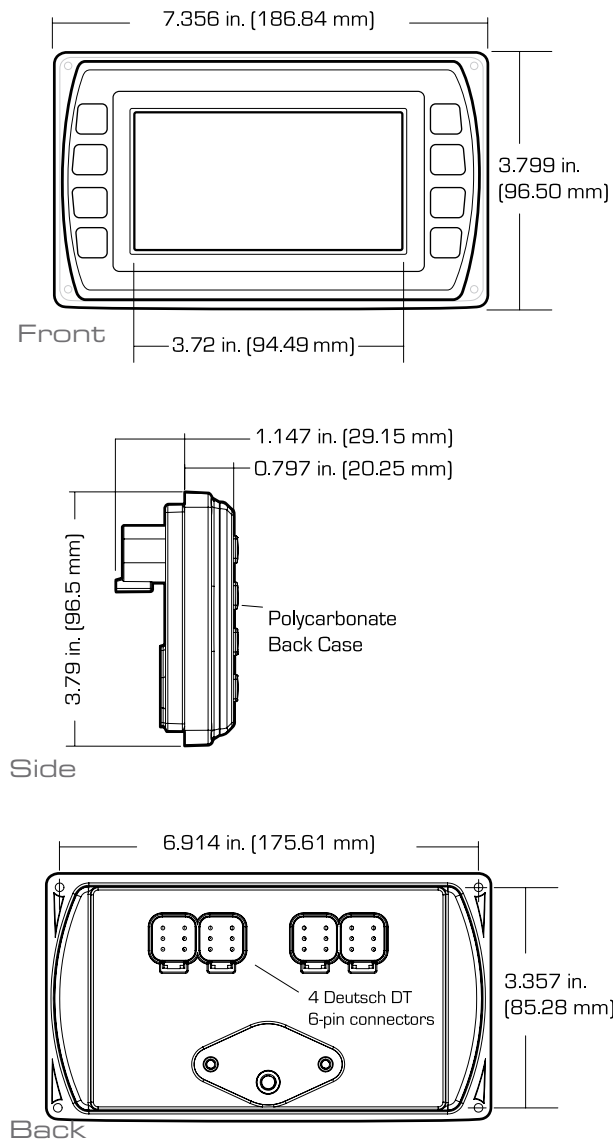
The PV450 features a 4.3-inch screen perfect for applications with tighter spaces, and it delivers the same powerful performance as Murphy's larger configurable displays. In addition, the PV450 display meets the requirements for Tier4/Euro Stage IIIB emissions monitoring from the factory.

Customize the PV450 with Murphy's PowerVision Configuration Studio™, a powerful tool that allows you to customize the look and feel of equipment screens, customize parameters, edit troubleshooting information, add company branding and more.



THE POWERVIEW™ 450

STANDARD DIMENSIONS



TECHNICAL SPECS:

- Display: Bonded 4.3"/109mm color transmissive TFT LCD
- Resolution: WQVGA, 480 x 272 pixels, 16-bit color
- Aspect Ratio: 16:9
- Orientation: Landscape or portrait
- Backlighting: LED, 500-650 cd/m² (30,000 hr lifetime)
- Microprocessor: Freescale iMX35, 32bit, 532MHz
- QNX Real-Time Operating System
- Flash Memory: 256 MB (expandable to 8GB)
- RAM: 128MB DDR2 SDRAM
- USB 2.0 host (full speed)
- Operating Voltage: 6-32 VDC, reverse polarity and load-dump protected
- Power Consumption: 10W max
- CAN: Two CAN 2.0B; optional NMEA 2000 isolation
- RS 485: 1 MODBUS Master/Slave port, PVA
- Optional video input: Two NTSC/PAL input channels (one displayed at a time)
- Protocols: J1939, NMEA 2000, CANopen, Freeform CAN
- Connection: 4 Deutsch DT 6-pin connectors
- Keyboard: 8 tactile buttons
- Input: 1 Resistive, 0-5V, or 4-20mA (software configurable)
- Output: 1 open-drain, capable of syncing 500mA
- Real-Time clock with battery backup

ENVIRONMENTAL

- Operating Temperature: -40°C to 85°C (-40° to 185°F)
- Storage Temperature: -40°C to 85°C (-40° to 185°F)
- Protection: IP 66 and 67, front and back
- Emissions and Immunity:
 - Electromagnetic Compatibility: 2004/108/EC
 - EN 61000-6-4
 - EN 61000-6-2 (immunity)
 - EN 501121-3-2
 - EN 12895
 - J1113/2, 4, 11, 12, 21, 24, 26 and 41
- Vibration: 7.86g random vibrate [5-2,000Hz] in 3 axis
- Shock: ±50g in 3 axis

ADDITIONAL OPTIONS

- LCD Touchscreen (projected) capability

FW MURPHY

5311 South 122nd East Avenue
 Tulsa, Oklahoma 74146 USA
 Phone: +1 918 317 4100 Fax: +1 918 317 4266
 E-mail: sales@fwmurphy.com
 Web: www.fwmurphy.com

ECONROLS, INC

5757 Farinon Drive
 San Antonio, Texas 78249 USA
 Phone: +1 210 495 9772 Fax: +1 210 495 9791
 E-mail: info@econcontrols.com
 Web: www.econcontrols.com

FWM INDUSTRIAL PANEL DIVISION

5311 South 122nd East Avenue
 Tulsa, Oklahoma 74146 USA
 Phone: +1 918 317 4100 Fax: +1 918 317 4124
 E-mail: ipdsales@fwmurphy.com
 Web: www.fwmurphy.com

FRANK W. MURPHY, LTD

Church Rd Laverstock
 Salisbury SP1 1QZ UK
 Phone: +44 1722 410055 Fax: +44 1722 410088
 E-mail: sales@fwmurphy.co.uk
 Web: www.fwmurphy.co.uk

FW MURPHY INSTRUMENTS (HANGZHOU) CO. LTD

77 23rd Street
 Hangzhou Economic & Technological Development Area
 Hangzhou, Zhejiang 310018 China
 Phone: +86 571 8788 6060 Fax: +86 571 8684 8878
 E-mail: apsales@fwmurphy.com
 Web: www.fwmurphy.com/company_ch

FW MURPHY (LATIN AMERICA & CARIBBEAN)

Apdo. Postal 2-06, Admon. "Lomas" Cord. Arakán 606-16
 Lomas 4th Sección 78211, San Luis Potosí, S.L.P., México
 Phone: +1 918 317-2500
 E-mail: lasales@fwmurphy.com
 Web: www.fwmurphy.com

FW MURPHY INDIA

Maharashtra State, India
 Phone: +91 91581 37633
 E-mail: indiasales@fwmurphy.com
 Web: www.fwmurphy.com

COMPUTRONIC CONTROLS, LTD

Phone: +44 1722 410055 Fax: +44 1722 410088
 E-mail: sales@computroniccontrols.com
 Web: www.computroniccontrols.com



USA-ISO 9001:2008 FM 28221
 UK-ISO 9001:2008 FM 29422
 CHINA-ISO 9001:2008 FM 52385
 Registered Facilities





MORE POWER AND MEMORY FOR ENHANCED USER EXPERIENCE

POWerview® 780B



Features a new faster processor
with video playback abilities

Offers twice as much flash
memory as the PV780

CAN-based display with rich,
full-color graphics

Compatible with mechanical
and electronic engines

Bonded glare-free LCD screen

Superior visibility even in sunlight



The new PV780B delivers bright, vivid graphics on a 7-inch display with a high-speed processor and provides the same rugged reliability customers have come to expect out of the PowerView family of HMI products.

Available with a touch screen designed for use with gloves and unmatched performance in the harshest conditions, the PV780B is the best-in-class choice for OEMs and integrators looking to give their operators the best equipment experience.

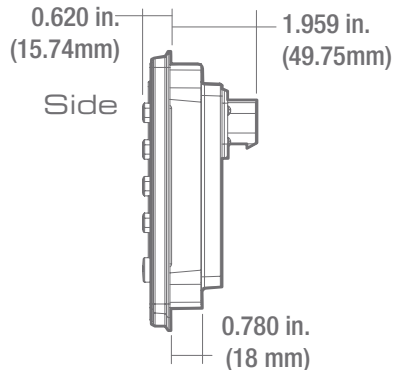
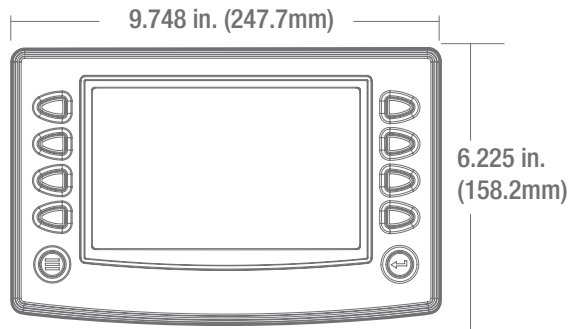
The full-featured, configurable display integrates vital engine, transmission and diagnostic information into an easy-to-read operator interface. The 1000-nit 7-inch screen can easily be viewed, even in full sunlight. The display's bonded LCD and rugged design make it a perfect solution for all types of environments and applications.

Customization of the display can be accomplished quickly via graphical programming or scripting with the PowerVision Configuration Studio® software.

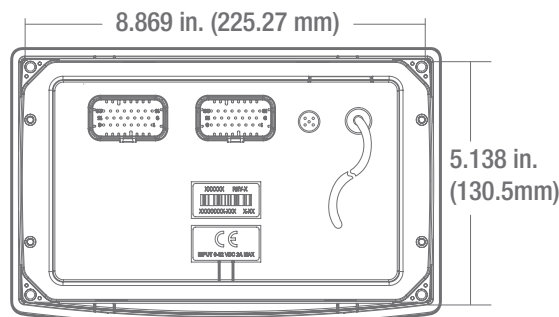
POWerview® 780B

DIMENSIONS

Front



Back



SPECIFICATIONS

COMPUTING:

- Main Processor: Renesas R-Car M2, 32 Bit Arm Cortex A15 Processor, 1.5 GHz, QNX® Realtime Operating System
- Storage: 8 GB Flash for Operating system, Application and Configuration
- RAM: 512 MB DDR3-SDRAM
- Graphics: PowerVR SGX544MP2 (3D) (Option)
Renesas graphics processor (2D)

HARDWARE:

- Display: 7" (178mm) LED backlight LVDS TFT LCD
- Color: 16-bit color
- Resolution: WVGA, 800 X 480 pixels
- Contrast Ratio: 600:1 (Typ.)
- Brightness: 1000 cd/m²
- Surface: Anti-glare and hard-coating
- Touch Panel: Glove touch PCAP
- Keypad: 10 tactile configurable soft keys with white LED backlight
- Real Time Clock with battery backup
- Connectors: (2) Ampseal 23 pin;
(1) M12 5 pin;
(1) USB Pig tail
- Video input: 3 NTSC/PAL (Single channel viewable)

COMMUNICATION:

- CAN: (2) CAN 2.0B according to ISO-11898-2; J1939 and CANopen; proprietary
- Serial: (1) RS-485 serial (MODBUS master/slave)
- USB: (1) USB 2.0 Full Speed Host
- Ethernet: 1 X Ethernet 10/100 Base-T (Option coming soon)
- WiFi: 802.11 b/g radio (Option coming soon)
- Bluetooth: Fully integrated Bluetooth 2.1 class 1 (Option coming soon)

ELECTRICAL:

- Operating Voltage: 6 - 36 VDC, reverse polarity protected
- Outputs: (1) 500mA Switched Low-side
(1) Frequency Out (2Hz - 3KHz)
- Inputs: (3) Analog 0-5VDC, 4-20mA, or resistive, 10-bit resolution
(5) Discrete digital, active-high
(1) Frequency In (2Hz - 10kHz) 5Vpk-pk min, 120V pk-pk max

ENVIRONMENTAL:

- Operating and Storage Temperature: -40C to +85C [-40F to +185F]
- Protection: IP66 and IP67, front and back, for outdoor use
- Vibration: 7.86 Grms (5 - 2000Hz), 3 axes
- Shock: ±50G in 3 axes
- EMC/EMI: SAEJ1113, ISO13766, CE per 2014/30/EU

SELECTION MONITORING EQUIPMENT MANUFACTURER
5011 B 122ND EAST AVENUE
WILDA, OR 97141

SELECTION MONITORING LTD. - UNITED KINGDOM
CHURCH ROAD LAYERSHIRE
BALFORTH OP1 10Z UK

SHANGHAI INTERNATIONAL TRADING - CHINA
SUITE 1704, AITRA BUILDING, 187 ZHONGYI RD
SHANGHAI, 200001 CHINA

SELECTION MONITORING INDIA PVT. LTD.
301, 3RD FLOOR, KRISHNA CHAMBERS,
11 GALAXY ESTATE, 100TH MAIN ROAD,
KORAMANGALA, PUNE-411001,
MAHARASHTRA, INDIA

U.S. SALES & SUPPORT

SELECTION MONITORING
PHONE: 818 317 4100
EMAIL: SALES@SELECTIONMONITORING.COM
WWW.SELECTIONMONITORING.COM

SELECTION MONITORING, PAKISTAN BRANCH
PHONE: 818 317 4100
EMAIL: INFO@SELECTIONMONITORING.COM

INTERNATIONAL SALES & SUPPORT

EUROPE, MIDDLE EAST, AFRICA
PHONE: +44 1753 410000
EMAIL: SALES@SELECTIONMONITORING.COM

CHINA
PHONE: +86 21 6237 0000
EMAIL: AP@SELECTIONMONITORING.COM

LATIN AMERICA & CARIBBEAN
PHONE: +1 918 317 2000
EMAIL: LA@SELECTIONMONITORING.COM

INDIA
PHONE: +91 11 881 6700
EMAIL: INDIA@SELECTIONMONITORING.COM





MURPHY®

by **ENOVATION** CONTROLS

POWerview®
1100

NEW LARGE DISPLAY BRINGS CAR-LIKE TECHNOLOGY TO RUGGED APPLICATIONS



Boasts high-speed processor and high-definition display

Large 10.6-inch display features rich color graphics

Offers complete connectivity with Bluetooth, Wi-Fi and more

Stereo functionality built-in for streamlined cab experience



Murphy brings a whole new experience to your applications with the PowerView 1100. This large 10.6-inch display features a high-speed processor that allows you to bring even more into your application. In addition to providing vital engine information, the PV1100 packs an infotainment hub in the cab with media playback from your phone via USB. It also boasts AM/FM stereo, Bluetooth and Wi-Fi connectivity.

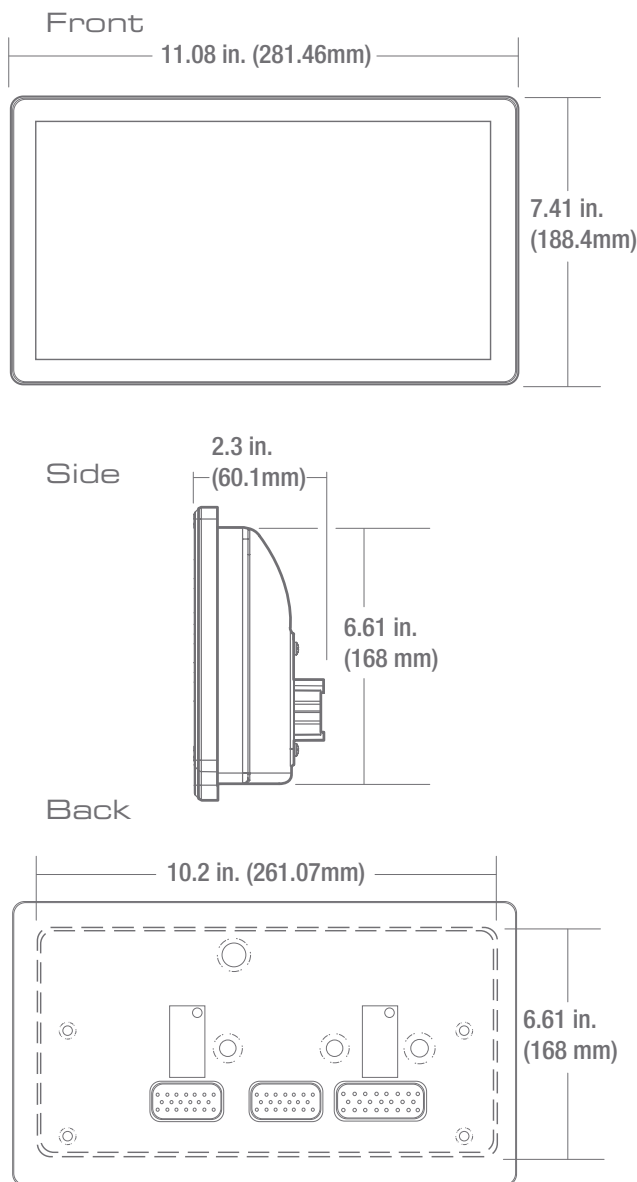
The full-featured, configurable display integrates engine, transmission and diagnostic information into an easy-to-read operator interface.

The 10.6-inch screen, with glove touch, can easily be viewed, even in full sunlight. The display's bonded LCD and rugged design make it a perfect solution for all types of environments and applications.

Customization of the display can be accomplished quickly via graphical programming or scripting with the PowerVision Configuration Studio® software.

POWerview® 1100

DIMENSIONS



SPECIFICATIONS

COMPUTING:

- Main Processor: Renesas R-Car M2, 32 Bit Arm Cortex A15 Processor @ 1.5 GHz,
- Operating System: QNX® Realtime Operating System
- Storage: 8 GB Flash memory
- RAM: 512 MB DDR3-SDRAM
- Graphics: PowerVR SGX544MP2 (3D) (Option)
Renesas graphics processor (2D)

DISPLAY:

- Type: 10.6" (231.36 mm [H] x 138.82 mm [V]) LVDS TFT LCD with LED backlight
- Color: 24-Bit color
- Resolution: 1280 x 768x
- Contrast Ratio: Typ. 1000:1
- Brightness: 1000 cd/m²
- Surface: Anti-glare, hard-coating
- Touch Panel: Projected capacitive (PCAP) with Glove touch

HARDWARE:

- Real Time Clock: Available with Li-Ion battery backup
- Connectors: (2) Ampseal 23 pin (Main)
(1) Ampseal 35 pin (Stereo)
(1) M12, 5-pin (Ethernet)
(1) USB pigtail
(1) Radio Antenna Jack
- Video Inputs: (3) NTSC/PAL

COMMUNICATION:

- CAN: (2) CAN 2.0B according to ISO-11898-2; J1939 and CANopen; proprietary messaging
- Serial: RS-485 serial (Modbus: Master/Slave)
- USB: USB 2.0 Full Speed Host
- Ethernet: Ethernet 10/100 Base-T
- Wi-Fi: 802.11 b/g radio
- Bluetooth: Fully Integrated Bluetooth 2.1, Class 1

ELECTRICAL:

- Operating Voltage: 6 - 36 VDC, Reverse polarity protected
- Outputs: (1) 500mA Switched Low-side
(1) Frequency Output (2Hz - 3KHz)
- Inputs: (3) Analog 0 - 5 VDC, 4-20mA, Resistive, 10-bit resolution
(5) Discrete digital, active-high
(1) Frequency In (2Hz - 10kHz) 5V pk-pk min, 120Vpk-pk max

INFOTAINMENT:

- Stereo output (20Hz - 20KHz)
 - (1) Subwoofer (configurable, 30Hz - 250Hz)
 - (2) Auxiliary Inputs
 - (3) Amp Turn On/Accessory
- FM Tuner: Frequency Range: 87.9 MHz to 107.9 MHz
Usable Sensitivity: 16 dBµV typical @ 26 dB SINAD
50dB Quieting Sensitivity: 14 dBµV
Alternate Channel Selectivity: 70 dB
Stereo Separation: 35 dB (1 kHz)
Frequency Response: 30 Hz to 15 kHz
- AM Tuner: Frequency Range: 530 kHz to 1710 kHz
Usable Sensitivity: 50 dBµV
- WX Tuner: Frequency Range: 162.4 MHz to 162.55 MHz
Usable Sensitivity: 20 dBµV @ SINAD 12dB
- USB Media: MP3, M4A Playback
- Bluetooth: Audio streaming

ENVIRONMENTAL:

- Operating and Storage Temperature: -40C to +85C [-40F to +185F]
- Protection: IP66 and IP67, front and back, for outdoor use
- Vibration: 7.86 Grms [5 - 2000Hz], 3 axes
- Shock: ±50G in 3 axes
- EMC/EMI: SAEJ1113, ISO13766, E-mark (ECE R10.5), EN13309, EN 14982, CE per 2014/30/EU, FCC part 15

ENOVATION CONTROLS CORPORATE HEADQUARTERS
5311 S 122ND EAST AVENUE
TULSA, OK 74146

ENOVATION CONTROLS LTD. - UNITED KINGDOM
CHURCH ROAD LAVERSTOCK
SALISBURY SP1 1QZ UK

MURPHY INTERNATIONAL TRADING - CHINA
SUITE 1704, ANTAI BUILDING, 107 ZUNYI RD
SHANGHAI, 2000 S1 CHINA

ENOVATION CONTROLS INDIA PVT. LTD.
301, 3RD FLOOR, KRSNA CHAMBERS,
11 GALAXY GARDENS, NORTH MAIN ROAD,
KOREGAON PARK, PUNE 411001,
MAHARASHTRA, INDIA

U.S. SALES & SUPPORT

MURPHY PRODUCTS
PHONE: 918 317 4100
EMAIL: SALES@ENOVATIONCONTROLS.COM
WWW.ENOVATIONCONTROLS.COM

MURPHY INDUSTRIAL PANEL DIVISION
PHONE: 918 317 4100
EMAIL: IPDSALES@ENOVATIONCONTROLS.COM

INTERNATIONAL SALES & SUPPORT

EUROPE, MIDDLE EAST, AFRICA
PHONE: +44 1722 410055
EMAIL: SALES@ENOVATIONCONTROLS.EU

CHINA
PHONE: +86 21 6237 5885
EMAIL: APSALES@ENOVATIONCONTROLS.COM

LATIN AMERICA & CARIBBEAN
PHONE: +1 918 317 2500
EMAIL: LASALES@ENOVATIONCONTROLS.COM

INDIA
PHONE: +91 91581 37633
EMAIL: INDIAALES@ENOVATIONCONTROLS.COM



FM 28221 (Tulsa, OK - USA)
FM 29422 (UK)



MURPHY®

by **ENOVATION** CONTROLS

POWerview®
1200

LARGE, FULL-COLOR DISPLAY BRINGS POWER, CONNECTIVITY TO RUGGED APPLICATIONS



Largest display in the
PowerView line at 12.3-in.

Boasts high-speed processor
and wide format display

Easy-to-use configuration
software

CAN-based display with
rich, full-color graphics

Compatible with mechanical
and electronic engines

Bonded glare-free LCD screen



The PowerView 1200 offers all the features of Murphy's popular PV780 with more power, more memory and more real estate to show vital application information on one screen. With its faster processor, this version of the full-color display adds more connectivity with Bluetooth, Ethernet and Wi-Fi capabilities while it includes an expansive 8GB of storage.

The full-featured, configurable display integrates vital engine, transmission and diagnostic information into an easy-to-read operator interface.

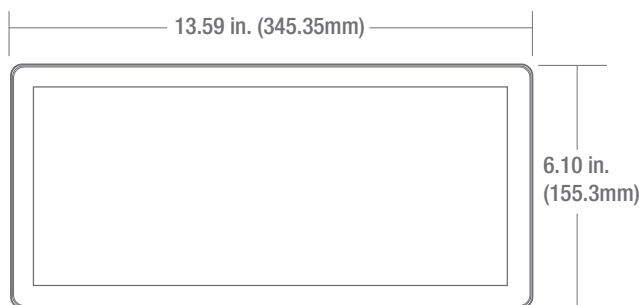
The 12.3-inch screen, with glove touch, can be easily viewed, even in full sunlight. The display's bonded LCD and rugged design make it a perfect solution for all types of environments and applications.

Customization of the display can be accomplished quickly via graphical programming or scripting with the PowerVision Configuration Studio® software. This tool allows for quick creation of personalized user interfaces, custom parameters and specialized graphics for on-screen text, OEM branding and more.

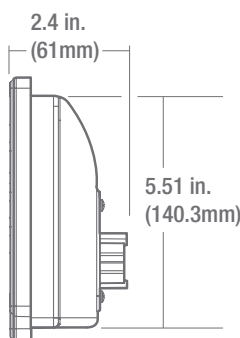
POWerview® 1200

DIMENSIONS

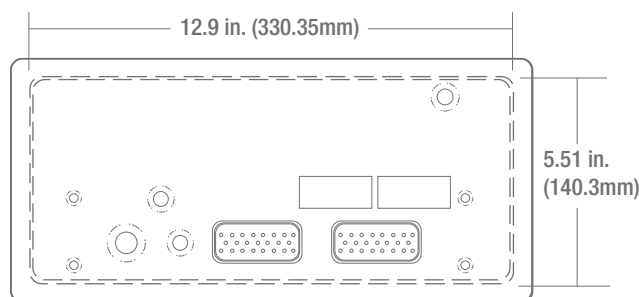
Front



Side



Back



SPECIFICATIONS

COMPUTING:

- Main Processor: Renesas R-Car M2, 32 Bit Arm Cortex A15 Processor @ 1.5 GHz
- Operating System: GNX® Realtime Operating System
- Storage: 8 GB Flash memory
- RAM: 512 MB DDR3-SDRAM
- Graphics: PowerVR SGX544MP2 (3D) [Option]
Renesas graphics processor (2D)

HARDWARE:

- Display: Type 12.3" (320 mm [H] x 130 mm [V])
LVDS IPS LCD with LED backlight
- Color: 24-Bit color
- Resolution: 1280 x 480
- Contrast Ratio: Typ. 800:1
- Brightness: 1000 cd/m²
- Surface: Anti-glare, hard-coating, touch panel
- Real Time Clock: Available with Li-Ion battery backup
- Connectors: (2) Ampseal 23 pin (Main)
(1) M12, 5-pin (Ethernet)
(1) USB pigtail

- Video input: (3) NTSC/PAL

COMMUNICATION:

- CAN: (2) CAN 2.0B according to ISO-11898-2;
J1939 and CANopen; proprietary messaging
- Serial: (1) RS-485 serial (Modbus: Master/Slave)
- USB: (2) USB 2.0 Full Speed Host
- Ethernet: (1) Ethernet 10/100 Base-T
- WiFi: 802.11 b/g radio
- Bluetooth: Fully Integrated Bluetooth 2.1, Class 1

ELECTRICAL:

- Operating Voltage: 6 – 36 VDC, Reverse polarity protected
- Outputs: (1) 500mA Switched Low-side
(1) Frequency Output (2Hz – 3KHz)
- Inputs: (3) Analog 0 – 5 VDC, 4-20mA, Resistive, 10-bit resolution
(5) Discrete digital, active-high
(1) Frequency In (2Hz – 10kHz) 5Vpk-pk min, 120Vpk-pk max
(1) Frequency In (2Hz – 10kHz) 5Vpk-pk min, 120Vpk-pk max

ENVIRONMENTAL:

- Operating and Storage Temperature: -40C to +85C [-40F to +185F]
- Protection: IP66 and IP67, front and back, for outdoor use
- Vibration: 7.86 Grms [5 – 2000Hz], 3 axes
- Shock: ±50G in 3 axes
- EMC/EMI: SAEJ1113, ISO13766, E-mark [ECE R10.5], EN13309, EN 14982, CE per 2014/30/EU, FCC part 15

ENOVATION CONTROLS CORPORATE HEADQUARTERS
5311 S 122ND EAST AVENUE
TULSA, OK 74146

ENOVATION CONTROLS LTD. – UNITED KINGDOM
CHURCH ROAD LAVERSTOCK
SALISBURY SP1 1QZ UK

MURPHY INTERNATIONAL TRADING – CHINA
SUITE 1704, ANTAI BUILDING, 107 ZUNYI RD
SHANGHAI, 2000 S1 CHINA

ENOVATION CONTROLS INDIA PVT. LTD.
301, 3RD FLOOR, KRSNA CHAMBERS,
11 GALAXY GARDENS, NORTH MAIN ROAD,
KOREGAON PARK, PUNE 411001,
MAHARASHTRA, INDIA

U.S. SALES & SUPPORT

MURPHY PRODUCTS
PHONE: 918 317 4100
EMAIL: SALES@ENOVATIONCONTROLS.COM
WWW.ENOVATIONCONTROLS.COM

MURPHY INDUSTRIAL PANEL DIVISION
PHONE: 918 317 4100
EMAIL: IPDSALES@ENOVATIONCONTROLS.COM

INTERNATIONAL SALES & SUPPORT

EUROPE, MIDDLE EAST, AFRICA
PHONE: +44 1722 410055
EMAIL: SALES@ENOVATIONCONTROLS.EU

CHINA
PHONE: +86 21 6237 5885
EMAIL: APSALES@ENOVATIONCONTROLS.COM

LATIN AMERICA & CARIBBEAN
PHONE: +1 918 317 2500
EMAIL: LASALES@ENOVATIONCONTROLS.COM

INDIA
PHONE: +91 91581 37633
EMAIL: INDIALES@ENOVATIONCONTROLS.COM



FM 28221 (Tulsa, OK - USA)
FM 29422 (UK)

POWERSHIELD CONFIGURATION STUDIO™

Configuration Tool for PowerView™
and HelmView™ Displays

Drag-and-Drop Interface
for Simple Customization

Supports J1939, CANopen,
NMEA Protocols and
Proprietary CAN Messages

Customize On-Screen Graphics, Edit
Troubleshooting Information and More

Library of Icons/Backgrounds
Available to Choose From

Data Logging and Diagnostic
Messaging Functionality for
Simplified Setup and Control



Murphy's PowerVision Configuration Studio allows you to customize multiple aspects of your PowerView/HelmView display from a personal computer.

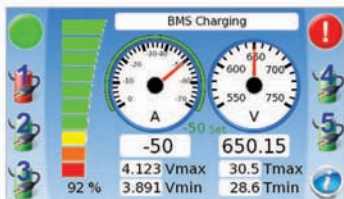
Choose from our library of icons and backgrounds or upload your own images to design uniquely customized equipment screens. The configuration tool offers varying levels of control – from basic display options to in-depth custom programming through C-code syntax scripting capabilities.

The software tool comes pre-loaded with over 100 commonly used J1939 and NMEA parameters. Additional parameters can be imported through CANCapture™ or other CAN analysis software. In addition, the tool supports several protocols for machine integration, including J1939, CANopen, NMEA and proprietary CAN protocols through FreeForm CAN protocol.

By performing the changes yourself through the simple interface, you no longer have to wait on the display provider to complete costly changes, plus you save time getting your product to market faster.

CUSTOMIZED FOR ANY APPLICATION

Create custom equipment screens for your particular application.



PV780

Easily Adaptable Configurations.

Want your custom configuration on multiple displays? Repurpose your display configuration with the click of a button!



PV450

The configuration software is versatile enough to handle even the most demanding programming and application requirements.

Programming features include:

- Drag and Drop Interface for WYSIWYG programming
- State Machines with Visual Flow Diagrams, Transitions, Actions and Event Timers
- C/C++ Syntax Scripting Capabilities for In-Depth Programming
- Data Simulation for Off-Line Viewing of Configurations

PowerVision Configuration Tool supports the following displays:
PV350/PV380; PV450/HV450; PV780/HV780

FW MURPHY

5311 South 122nd East Avenue
Tulsa, Oklahoma 74146 USA
Phone: +1 918 317 4100 Fax: +1 918 317 4266
E-mail: sales@fwmurphy.com
Web: www.fwmurphy.com

ECONTROLS, INC

5757 Farinon Drive
San Antonio, Texas 78249 USA
Phone: +1 210 495 9772 Fax: +1 210 495 9791
E-mail: info@econtrols.com
Web: www.econtrols.com

FWM INDUSTRIAL PANEL DIVISION

5311 South 122nd East Avenue
Tulsa, Oklahoma 74146 USA
Phone: +1 918 317 4100 Fax: +1 918 317 4124
E-mail: ipdsales@fwmurphy.com
Web: www.fwmurphy.com

FRANK W. MURPHY, LTD

Church Road, Laverstock
Salisbury SP1 1QZ UK
Phone: +44 1722 410055 Fax: +44 1722 410088
E-mail: sales@fwmurphy.co.uk
Web: www.fwmurphy.co.uk

FW MURPHY INSTRUMENTS (HANGZHOU) CO. LTD

77 23rd Street
Hangzhou Economic & Technological Development Area
Hangzhou, Zhejiang 310018 China
Phone: +86 571 8788 6060 Fax: +86 571 8684 8878
E-mail: aps@fwmurphy.com
Web: www.fwmurphy.com/company_ch

FW MURPHY (LATIN AMERICA & CARIBBEAN)

Apdo. Postal 2-06, Admon. "Lomas" Cord. Arakán 606-16
Lomas 4th Sección 78211, San Luis Potosí, S.L.P., México
Phone: +1 918 317-2500
E-mail: lasales@fwmurphy.com
Web: www.fwmurphy.com

FW MURPHY INDIA

301, 3rd Floor, Krsna Chambers
11, Galaxy Garden, North Main Road,
Koregaon Park, Pune - 411001, Maharashtra, India
Phone: +91 91581 37633
E-mail: indiasales@fwmurphy.com
Web: www.fwmurphy.com

FW MURPHY (SOUTH KOREA)

Seongnam, South Korea
Phone: +82 70 7951 4100
E-mail: skoreasales@fwmurphy.com
Web: www.fwmurphy.com



USA-ISO 9001:2008 FM 28221
UK-ISO 9001:2008 FM 29422
CHINA-ISO 9001:2008 FM 52385
Registered Facilities





Connect 50 DC Module

EmpirBus Connect 50 is a 31-channel DC module aimed to provide state of the art technology to Digital Switching. Based on components designed for the automotive industry, the Connect 50 have been given an outstanding cost/performance ratio and at the same time provide new features to the market.

The outputs have been fitted with high accuracy current feedback that enables real time readout of the current consumption per channel. A new design of the NMEA connection provides galvanically isolated connection, without the need for a powered NMEA bus. The power consumption from the NMEA bus is ZERO for the Connect 50!

The Connect 50 comes as standard with 11 input channels and 20 output channels. As an option it can be equipped with ports for additional galvanic isolated CAN and serial interface. In addition there is also an option to fit the Connect 50 with WiFi for wireless control and connectivity.

Reverse polarity on two channels to control of tables, windows, hatches etc. is supplied as

standard as well as capability of controlling and synchronizing window wipers.

As on the EmpirBus NXT DCM, main power is connected by two M6 stainless steel bolts. The casing is IP65 rated, made from high-grade polycarbonate to deliver the robustness needed when operating under tougher conditions.

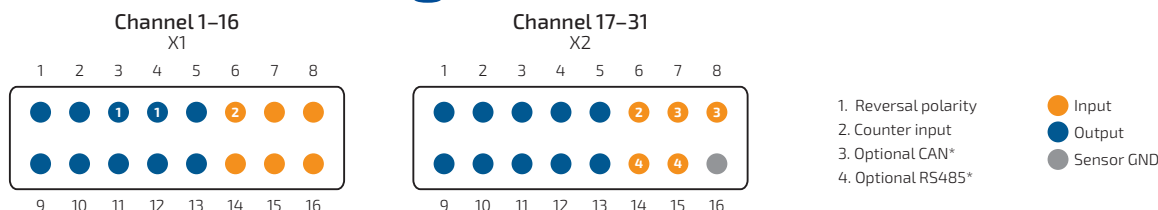
Connecting equipment is done by two 16 way Molex MX150L connectors known from the EmpirBus NXT. This is a guarantee for long lasting connections without risk of corrosion or glitches – at the same time offering quick connection and simplified installation.

Connect 50 – DC Module

Features

- **NMEA 2000 DC Module**
- **12 VDC operation, 50A Rating, Reverse polarity protection**
- **IP65**
- **NMEA 2000, no bus power needed (zero load from NMEA bus power supply)**
- **Self adapting**
- **20 outputs channels**
 - Electronic over-current protection and undercurrent detection, programmable fuse size
 - Discrete 10A operation, parallel operation for increased capacity
 - Manual Set / Reset of any channel direct from DC Module in real time
 - Soft start / Soft Stop / Dimmable
 - Real time current feedback
 - Wiper control, including parking, interval and multiple speed
 - 2 channels programmable polarity reversal (High Side & Low Side Switching)
- **11 input channels**
 - Inputs with indication
 - Multiplexed inputs – up to four switches per channel (no individual running / error indication)
 - Analogue inputs
 - Voltage 0 – 32V
 - Resistance 0 – 1 500 ohm
 - 2 counter inputs (0 – 10 kHz)

Channel configuration



* Optional

Specifications

Output:

High side:	20 ch	1-10A
Low side:	2 ch	6A

Digital input:

Standard input peak/average:	170mA/1mA
Week signal low side/high side	1mA/4mA
Current drive:	50mA

Analog input:

Volt:	0–32V +/-1%
Resistance:	0–1500 ohm +/-5%

Power supply:

Maximum current:	50A
Power consumption:	1,5mA
Supply voltage 12V:	9-16VDC

Communication:

CAN-bus NMEA 2000
CAN-bus galvanic isolated*
RS485 galvanic isolated*
WiFi*

Connector:

NMEA 2000:	Micro 5pin M12 Male
Channels:	Molex MX150L 16 circuits
Power supply:	M6 bolt

Ambient temp.: -20 to +70 degrees Celsius (dry)

Enclosure: IP65, Polycarbonate

Dimensions: 230 x 106 x 38 mm

Weight: 0,4 kg

Regulation comp: ABYC, RoHS, CE, RCM, FCC

* Optional



NXT DCM DC Module

The NXT DCM is an IP65 rated NMEA 2000 device that is connected to the main DC power and provides inputs and outputs to the system. Physically the DCM is a compact, easily mounted, 16 channel device, featuring two 16 way Molex MX150L connectors.

The main DC Power is connected by two M6 studs, stainless steel. In addition there is also a connector for EnOcean antenna. All output channels are electronically protected and feature undercurrent protection as well as soft start / stop and are capable of being electronically dimmed and of driving complex loads such as LED lighting or Windscreen Wipers directly.

To increase output capacity outputs may be paralleled and to simplify installations both High Side and Low Side switching is possible.

With multiple input capabilities and ranges the DCM is an extremely versatile and cost effective means to interface signals to the system and when combined with the powerful NXT software complex monitoring and control systems are easily realized in practice.

Features

- **NMEA 2000 DC Module**
- **12/24VDC operation, 100A Rating, DC Reverse polarity protection**
- **IP65**
- **Self adapting**
- **16 Universal user configurable bi-directional (I/O) channels**
- **Channels configured as outputs**
 - Electronic over-current protection and undercurrent detection, programmable fuse size
 - Discrete 10A or 18A operation, parallel operation for increased capacity
 - I.e. two output combined provide 36A, electronically limited and protected
 - Manual Set / Reset of any channel direct from DC Module in real time
 - Soft start / Soft Stop / Versatile Dimming / Lighting Effects
 - Wiper control, including parking, interval and multiple speed
 - Programmable polarity reversal (High Side & Low Side Switching)
- **Channels configured as inputs**
 - Volt free inputs with running / error indication
 - Multiplexed inputs – up to four switches per channel (no individual running / error indication)
 - Analogue inputs
 - Voltage Free
 - Voltage 0 – 32V
 - Current 4 – 20 mA
 - Resistance 0 – 1 500 ohm

Specifications

Output:

High side:	4 ch	18A*
High side:	12 ch	10A
Low side:	16 ch	0,5A

Digital input:

12V power peak/average:	170mA/1mA
24V power peak/average:	340mA/2mA
Current drive:	50mA

Analog input:

Volt:	0–32V +/-1%
Current:	4–20mA +/-1%
Resistance:	0–1500 ohm +/-5%

Power supply:

Maximum current:	100A
Power consumption:	0,25mA
Supply voltage 12V:	9–16VDC
Supply voltage 24V:	9–32VDC

Communication: CAN-bus NMEA 2000

Connector:

NMEA 2000:	Micro 5pin M12 Male
Channels:	Molex MX150L 16 circuits
Power supply:	M6 bolt
Antenna:	SMA female

Ambient temp.: -20 to +70 degrees Celsius (dry)

Enclosure: IP65, Polycarbonate

Dimensions: 230 x 106 x 38 mm

Weight: 0,4 kg

Regulation comp: ABYC, RoHS, CE, RCM

* Optional



MCU Master Control Unit

The NXT Master Control Unit is an essential component of a NXT installation and provides multiple functions. It is the central processor that drives the system, provides the computing power, intelligence and decision making. In addition there are various interfaces for connection to external devices.

The master Control Unit (MCU) is a NMEA 2000 device and talks to all of the other system components via the NMEA2000 network.

The MCU both stores and executes the configuration files for the installation holding data for every EmpirBus unit present. Should any unit or membrane panel need to be replaced it is the MCU that distributes the specific data to the replacement. The base address of the new component has been entered.

Standard Microsoft drivers are utilised for connecting the MCU to the PC, no drivers required.

The GSM interface provides possibilities for interaction with the system utilizing SMS. All interfaces are galvanic isolated to ensure integrity with other system devices.

A three-digit display provides displaying parameters and messages. Touch buttons allow new settings to be entered.

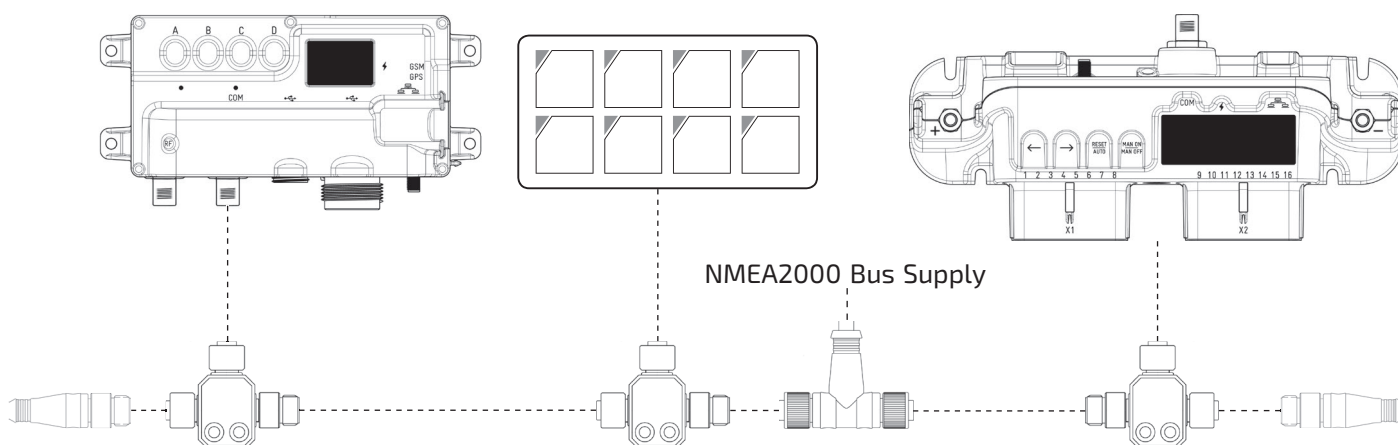
MCU – Master Control Unit

Features

- NMEA 2000 Master Control Unit
- PC Interface, USB mini socket
- Integrated GSM module
- Integrated audible buzzer
- IP65



Connection examples



Specifications

Communication:	CAN-bus NMEA 2000 GSM*
Power supply:	Power consumption max/average 300mA/0,25mA Supply voltage 9–32VDC
Connector:	
NMEA 2000	Micro 5pin M12 Male
Power supply	Micro 8pin M12 Male
USB Slave	Mini USB
Sim Card	Sim Card Holder (Mini)
Antenna	SMA Female

Ambient temp.:	-20 to +70 degrees Celsius (dry)
Enclosure:	IP65, Polycarbonate
Dimensions:	173 x 89 x 32,5 mm
Regulation comp.:	ABYC, RoHS, CE, RCM
Weight:	0,2 kg

* Optional



Atlantis Marine

Atlantis Marine are located in Plympton operating out of a purpose built 20,000 facility. Established in 1986 the company has built an envious reputation for offering quality product and providing excellent customer service.

In Addition to Kohler Atlantis are the UK distributors for EmpirBus, FW Murphy and Newmar Battery Chargers and we manufacturer the Aquafresh range of Watermakers.

Product Overview

- KOHLER have a superb range of marine generators engineered to perform reliably and on demand, you can trust Kohler to look after your on-board power requirements quietly and unobtrusively
- The versatile FW Murphy HelmView and PowerView displays are ideal for remote monitoring of marine services including generators, engines and transmissions and perfectly integrate with NXT.
- EMPIRBUS NXT – Undoubtable one of the leading marine automation systems, very versatile and capable. A complete solution for on-board distribution as well as control and monitoring including tanks, engines, and generators.
- Newmar – Dependable DC Power Products for a wide range of marine applications including battery charging systems.
- We manufacture our AQUAFRESH water makers to the highest quality standards in Plympton and utilise the latest digital controllers to produce potable water from 90 to 250 litres per hour. All water makers are supplied fully tested and ready to install.



Contact Us

Give us a call for more information about our services and products

Atlantis Marine Power
Atlantis House
Western Wood Way,
Langage Science Park,
Plympton,
Plymouth.
UK PL7 5BG

Tel: 01752 208810

sales@atlantismarine.com

www.atlantismarine.com

Atlantis "An enviable reputation for top class customer service"